



"Your Solutions Partner"

Specifications

F.O.B Sedalia, Missouri 65301



DBS-1 - 59-E3ZZ

OPTIONS:

- Stainless steel interior
- Oven racks
- Extended warranty: 2 years parts & labor

AGENCY LISTING:



DUKE MANUFACTURING CO.
 2305 N. Broadway
 St. Louis, MO 63102

800.735.3853 Toll Free
 314.231.5074 Fax
 www.dukemfg.com

Approval Stamp(s):

PRODUCT INFORMATION:

PROJECT: _____
 ITEM: _____
 QUANTITY: _____

MODEL:

Duke Baking Station - DBS - 1

- DBS-1** 59-E3 Oven, Electric/59-BS stand

OVEN SECTIONS:

- 5 racks/9 racks positions
- Porcelain interior finish - 15-3/4"W x 20"H x 21"D cavity
- Field reversible door, single hinge
- Stainless steel front, sides, top
- 1" insulation on bottom, sides, back
- 3" insulation on top

OVEN CONTROLS:

- "XX" - Solid state digital time and temperature controls, 12-hour countdown timer, **Cook and Hold** feature, 2-speed fan, Pulse fan capacity
- "ZZ" - 10 programmable menu buttons, 5-rack ID timers, computerized digital time and temperature controls. **Cook and Hold** feature, 2-speed fan, Pulse Fan capability

STAND SECTIONS:

- Stainless steel
- Pull-out top shelf
- 15" removable side shelf
- 2 undershelves
- NSF approved swivel casters, 2 locking

SHORT FORM SPECIFICATIONS:

Duke Baking Station - DBS - 1 - 59-E3 Oven/59-BS Stand. Oven section shall have single stainless steel door, with glass, hinged on oiled bronze bushings. Bottom, sides and back of oven shall be fully insulated with 1" thick insulation, top to have 3" thick insulation. Five racks and nine rack positions available in oven section. Two-speed, 1/2 HP blower motor in oven. 8.0 KW input, ON-OFF-COOL DOWN switch, fused to protect against overload shall be provided. Stand shall be constructed of stainless steel and consist of pull out top shelf to accommodate one 13" x 18": biscuit pan and 3 each 6" deep, 1/6 pan inserts. A removable 15" side shelf, either right or left side mounted, is included. An undershelf will accommodate up to 20 each 13" x 18" biscuit pans. A second undershelf will accommodate large containers. Stand to be mounted on NSF approved 4-1/2" diameter casters, two with locks. A 1/10 warranty consisting of 1 year parts and labor on the entire oven (excluding consumables) and an additional 10 year limited oven door warranty is standard.

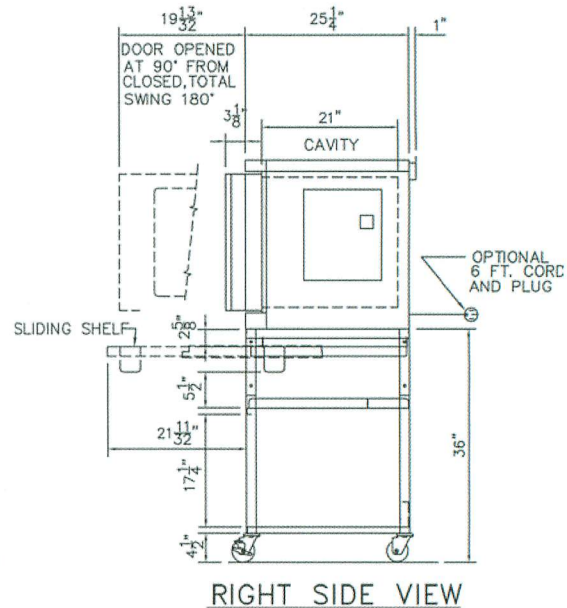
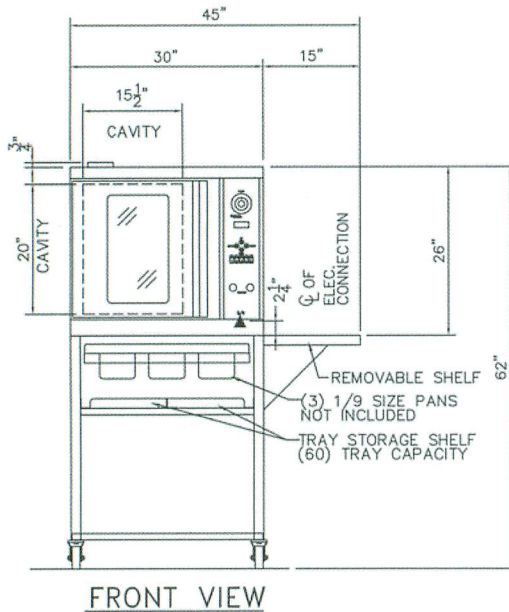
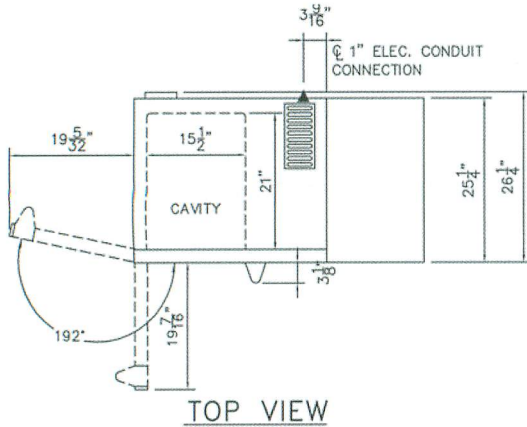


DUKE BAKING STATION - DBS-1

□ DBS-1 59-E3 oven, electric/59-BS Stand

Electrical Specifications			
	208V Amps	240 V Amps	KW
1 Phase	40.0	35.0	8.0
3 Phase	24.0	21.0	8.0

▲ - Electric connection point



DIMENSIONS:

FREIGHT CLASS: 85

Model	Depth front view		Width		Height top view		Cube ft. crated	Weight	
59-E3	25-1/4	64.1	30	76.2	26	66.0	14.2	265	120.5
59-BS	25-1/4	64.1	45	114.3	36	91.4	28.2	190	86.4



"Your Solutions Partner"

DUKE MANUFACTURING CO.
2305 N. Broadway
St. Louis, MO 63102

800.735.3853 Toll Free
314.231.5074 Fax
www.dukemfg.com

Specification subject to change

01/07
Printed in U.S.A.
© 2007, Duke Manufacturing Co.