



# T&S BRASS AND BRONZE WORKS, INC.

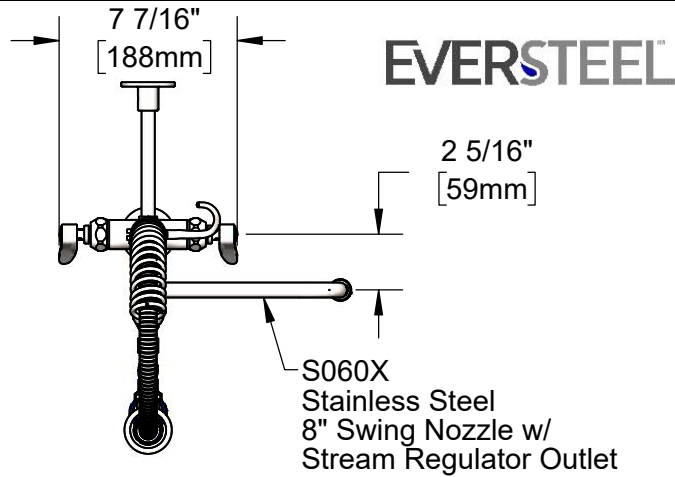
2 Saddleback Cove / P.O. Box 1088  
Travelers Rest, SC 29690

Model No.

**SMPM-2DLN-08**

Item No.

Travelers Rest, SC: 800-476-4103 • Simi Valley, CA: 800-423-0150 • Fax: 864-834-3518 • www.tsbrass.com



This Space for Architect/Engineer Approval

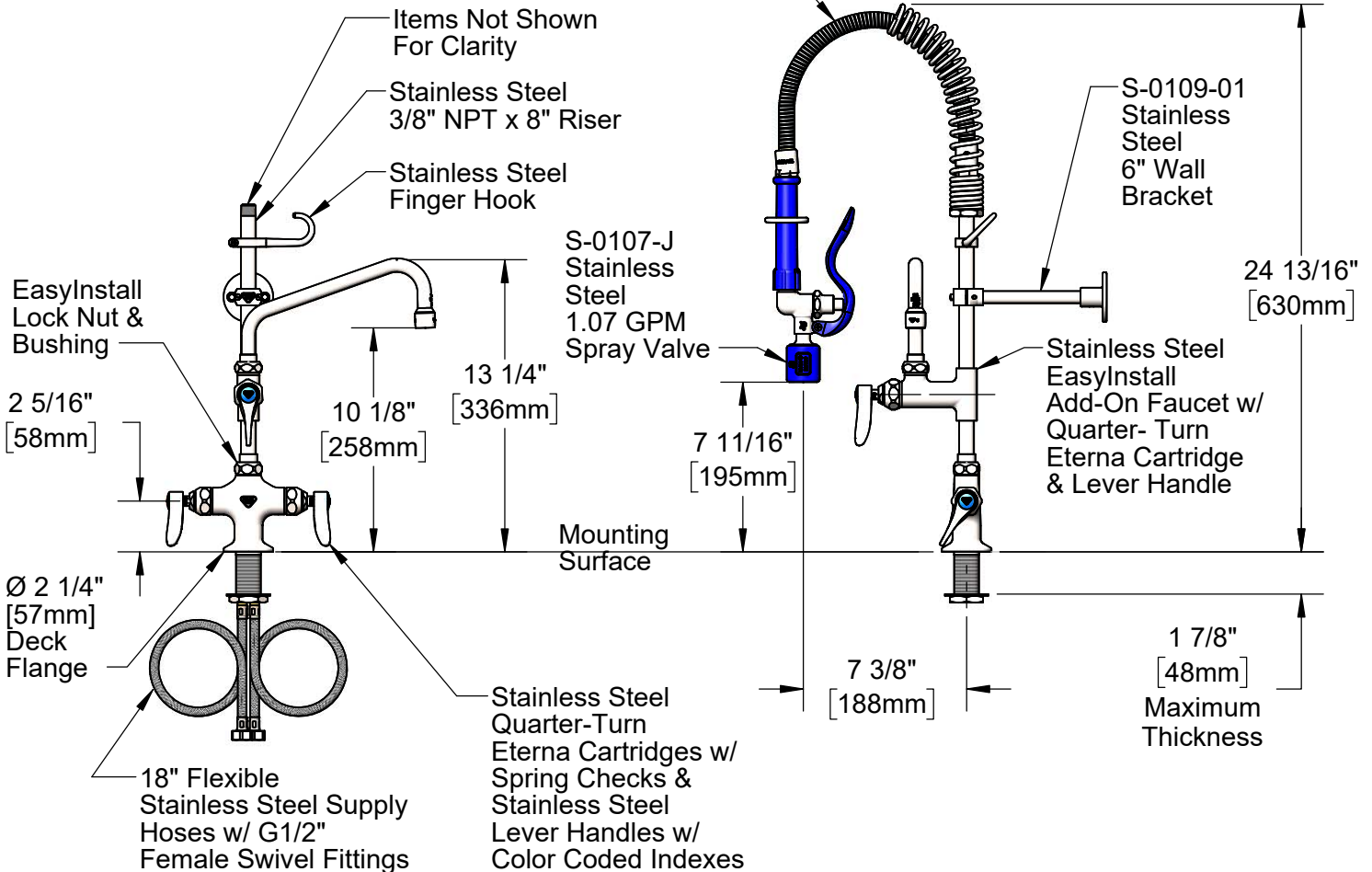
Job Name \_\_\_\_\_ Date \_\_\_\_\_

Model Specified \_\_\_\_\_ Quantity \_\_\_\_\_

Customer/Wholesaler \_\_\_\_\_

Contractor \_\_\_\_\_

Architect/Engineer \_\_\_\_\_



Rough-In Requirement:  
Ø 1 1/2" [38mm] Mounting Hole

## Product Specifications:

Pre-Rinse Unit: EasyInstall Stainless Steel Single Hole Deck Mount Mixing Faucet, SS Quarter-Turn Eterna Cartridges w/ Spring Checks, SS Lever Handles, SS Add-On Faucet, SS 8" Swing Nozzle, 24" Flexible Stainless Steel Hose, SS 1.07 GPM Spray Valve, SS 6" Wall Bracket & Flexible Stainless Steel Supply Hoses

## Product Compliance:

ASME A112.18.1 / CSA B125.1  
NSF 61 - Section 9  
NSF 372 (Low Lead Content)  
2019 DOE PRSV - Class II  
For Commercial Use Only



# T&S BRASS AND BRONZE WORKS, INC.

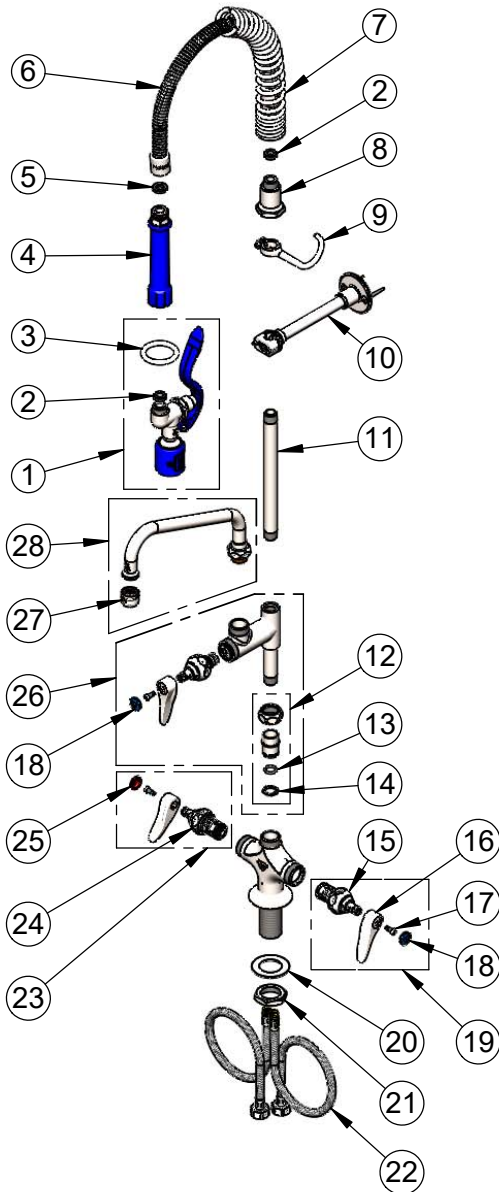
2 Saddleback Cove / P.O. Box 1088  
Travelers Rest, SC 29690

Model No.

**SMPM-2DLN-08**

Item No.

Travelers Rest, SC: 800-476-4103 • Simi Valley, CA: 800-423-0150 • Fax: 864-834-3518 • www.tsbrass.com



| ITEM NO. | SALES NO.    | DESCRIPTION  |
|----------|--------------|--|
| 1        | S-0107-J     | Stainless Steel 1.07 GPM Spray Valve (Blue)  |
| 2        | 010476-45    | #27 Washer   |
| 3        | S000907-30   | SS Spray Valve Hold Down Ring  |
| 4        | S011482-30   | Stainless Steel Grip Handle (Blue)   |
| 5        | 001014-45    | Washer, Hose Barrel  |
| 6        | S-0024-H2A   | 24" Flexible Stainless Steel Hose, Less Handle   |
| 7        | S016795-30   | Stainless Steel Compact Spring   |
| 8        | S000821-30   | Stainless Steel Spring Body  |
| 9        | S004R        | Stainless Steel Finger Hook  |
| 10       | S-0109-01    | Stainless Steel 6" Wall Bracket  |
| 11       | S078X        | Stainless Steel 3/8" NPT x 8" Riser  |
| 12       | SEZ-K        | Stainless Steel EasyInstall Kit: Nut, Bushing, O-Ring & Lock Washer                                    |
| 13       | 001065-45    | O-Ring   |
| 14       | 014200-45    | Star Washer, Anti-Rotation   |
| 15       | S012442-30NS | Stainless Steel Quarter-Turn Eterna Cartridge w/ Spring Check, LTC                                     |
| 16       | S001638-30NS | Lever Handle (New Style)   |
| 17       | 000925-45    | Lab Handle Screw   |
| 18       | 018506-19NS  | Blue Button Index, Press-in  |
| 19       | S002711-30NS | Stainless Steel Quarter-Turn Eterna Cartridge w/ Spring Check, Handle, Blue Index & Screw, LTC         |
| 20       | S007365-20   | Stainless Steel Lock Washer  |
| 21       | S000965-20   | Stainless Steel Lock Nut   |
| 22       | 012436-45DR  | Flexible Connector Hose  |
| 23       | S002712-30NS | Stainless Steel Quarter-Turn Eterna Cartridge w/ Spring Check, Handle, Red Index & Screw, RTC          |
| 24       | S012443-30NS | Stainless Steel Quarter-Turn Eterna Cartridge w/ Spring Check, RTC                                     |
| 25       | 001193-19NS  | Red Button Index, Press-in   |
| 26       | S-0155-LNEZ  | Stainless Steel EasyInstall Add-On Faucet w/ Quarter-Turn Eterna Cartridge & Lever Handle, Less Nozzle |
| 27       | S-PT         | SS Full Flow Stream Regulator, 55/64-27  |
| 28       | S060X        | Stainless Steel 8" Swing Nozzle  |

## Product Specifications:

Pre-Rinse Unit: EasyInstall Stainless Steel Single Hole Deck Mount Mixing Faucet, SS Quarter-Turn Eterna Cartridges w/ Spring Checks, SS Lever Handles, SS Add-On Faucet, SS 8" Swing Nozzle, 24" Flexible Stainless Steel Hose, SS 1.07 GPM Spray Valve, SS 6" Wall Bracket & Flexible Stainless Steel Supply Hoses

## Product Compliance:

ASME A112.18.1 / CSA B125.1  
NSF 61 - Section 9  
NSF 372 (Low Lead Content)  
2019 DOE PRSV - Class II  
For Commercial Use Only