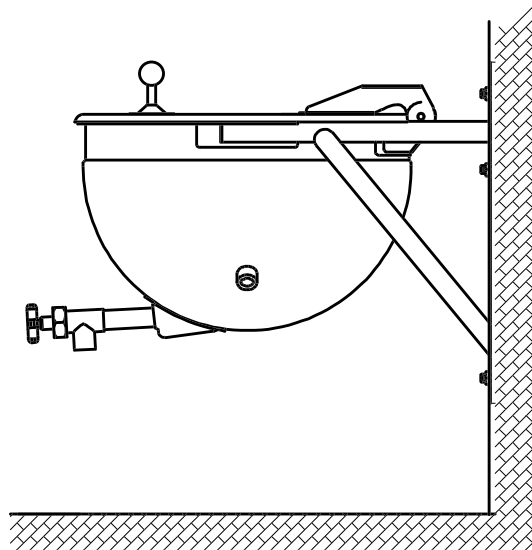


DIRECT STEAM KETTLE

FULL JACKETED, STATIONARY
WALL-BRACKET MOUNTED
DEEP DRAWN CONSTRUCTION
MADE IN USA

MODEL LSWT

STANDARD FEATURES



Model LSWT

- ◆ **The Legion 316 Kettle System**
 - ◇ 316 stainless liner
 - ◇ 316 stainless draw-off tube and welds
 - ◇ 316 stainless 1 1/2" compression draw-off valve
- ◆ 304 stainless kettle jacket
- ◆ 304 stainless support arms, seam welded to jacket
- ◆ 304 stainless, one piece, domed cover, actuator-assisted on 40 - 100 gallon
- ◆ 30 psi operating pressure up to 80 gallon; 25 psi for 100 gallon
- ◆ Perforated disk strainer, 1/4"

Legion equipment is built to comply with applicable standards for manufacturers. Approval agencies may include ASME, NSF, UL, ETL, AGA, CSA, CGA, and others. Legion reserves the right of design improvement or modification as warranted.

MODELS AND CAPACITIES			OPTIONAL FEATURES AND ACCESSORIES	
			See price list for supplemental information regarding options	
LSWT-20	20 gal.	(76 l.)	<input type="checkbox"/> Single or double fill faucet with bracket & 12 or 18" swing nozzle <input type="checkbox"/> 48" flexible spray hose assembly (vinyl or stainless) for use with dual or single fill faucet <input type="checkbox"/> Faucet bracket <input type="checkbox"/> Automatic water filling meter <i>(Call for information regarding additional faucet options)</i> <input type="checkbox"/> Single basket insert, 20 - 40 gallon <input type="checkbox"/> Tri-basket insert <input type="checkbox"/> Nylon bag insert with spreader ring <input type="checkbox"/> Lift-off cover <input type="checkbox"/> 1 piece actuator-assisted cover, 20 - 25 gallon <input type="checkbox"/> 2 piece hinged cover <input type="checkbox"/> Higher operating pressure <input type="checkbox"/> Air eliminator valve <input type="checkbox"/> Pressure reducing valve <input type="checkbox"/> Full body insulation	<input type="checkbox"/> Connection plumbing parts kit <input type="checkbox"/> Draw-off drain hose <input type="checkbox"/> Measuring strip <input type="checkbox"/> Perforated disk strainer 1/8" holes <input type="checkbox"/> Kettle care kit <input type="checkbox"/> Mixer/Agitator, 2 speed <input type="checkbox"/> In-wall carrier for wall mounting Prison/Security Options: <input type="checkbox"/> Fastener <i>(nut for draw-off)</i> <input type="checkbox"/> Draw-off nut driver tool <input type="checkbox"/> Lockable lid <input type="checkbox"/> Reinforced bar rim
LSWT-25	25 gal.	(95 l.)		
LSWT-40	40 gal.	(151 l.)		
LSWT-50	50 gal.	(189 l.)		
LSWT-60	60 gal.	(227 l.)		
LSWT-80	80 gal.	(303 l.)		
LSWT-100	100 gal.	(379 l.)		
Select draw-off valve: <input type="checkbox"/> 1 1/2" <input type="checkbox"/> 2" <input type="checkbox"/> 3" With: <input type="checkbox"/> compression <input type="checkbox"/> ball type fitting See price list for other draw-off options.				

Revision 999



LEGION® The Finest American Quality Since 1897
 LEGION INDUSTRIES, INC. ♦ 69 MAIN ST. ♦ DALLAS, PA 18612 ♦ (800) 833-9803 ♦ (570) 675-1575 ♦ FAX: (570) 675-7551

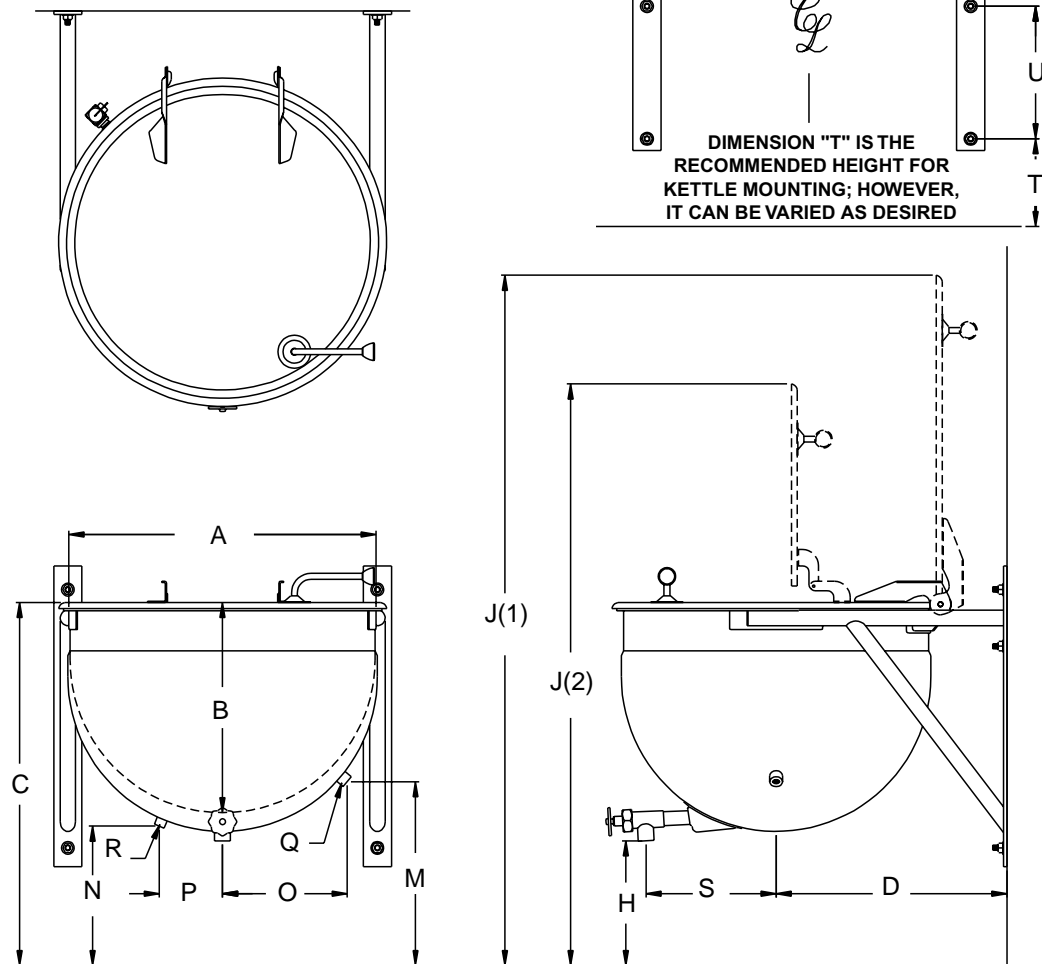
MODEL LSWT

FULL JACKETED, STATIONARY
WALL-BRACKET MOUNTED
DEEP DRAWN CONSTRUCTION
MADE IN USA

DIRECT STEAM KETTLE

DRAWING REPRESENTS MODEL LSWT-60

Q = NPT STEAM INLET
R = NPT STEAM RETURN



MODEL LSWT DIMENSIONS

GAL.	A	B	C*	D	H*	J1*	J2*	M	N	O	P	Q	R	S*	T	U	Z
20	23.0	15.0	31.4	18.0	13.9	57.4	47.5	17.8	15.0	8.8	5.0	.75	.50	13.0	8.6	16.5	23.5
25	25.5	15.5	30.0	19.3	13.0	58.5	48.0	16.4	14.2	8.7	5.3	.75	.50	13.0	7.3	16.5	26.0
40	29.5	19.0	35.3	21.8	13.3	67.8	58.8	17.3	14.5	10.2	6.0	.75	.50	14.0	7.5	21.5	30.0
50	29.5	21.8	36.3	21.8	13.3	68.8	61.0	17.3	14.5	10.2	6.0	1.00	.75	14.0	8.5	21.5	30.0
60	32.5	22.3	38.2	23.8	13.9	73.7	62.9	19.8	15.3	12.6	6.4	1.00	.75	14.0	10.5	21.5	33.0
80	39.0	22.0	37.4	28.0	13.3	79.4	62.3	19.5	14.4	14.3	6.4	1.00	.75	17.8	9.6	21.5	39.5
100	44.0	22.5	38.3	30.5	13.5	85.3	65.6	18.3	15.8	13.7	9.8	1.25	.75	19.7	10.5	21.5	44.5

*Dimensions on these drawings are applicable only when using a 1.5" diameter draw-off valve. If a 2" or 3" diameter draw-off valve is required, contact Legion for applicable dimensions.

Revision 999



LEGION The Finest American Quality Since 1897

LEGION INDUSTRIES, INC. ♦ 69 MAIN ST. ♦ DALLAS, PA 18612 ♦ (800) 833-9803 ♦ (570) 675-1575 ♦ FAX: (570) 675-7551

MIXER HEADS

**TWIN SHAFT AGITATOR
FIXED MOUNT, TILT OUT
MADE IN USA**

**MODEL
MV MIXER**

STANDARD FEATURES



**Model TWT-80 with mixer
and optional bottom
mounted butterfly valve**



Model LGB-40



Model TWU-40

- ◆ Enclosed, balanced, aluminum, mixer bridge
- ◆ Totally enclosed gear motor
 - ◇ Aluminum cast housing
 - ◇ Right angle output shaft
 - ◇ Single speed type (5 - 10 gallon)
 - ◇ Two speed type (20 - 100 gallon)
- ◆ 304 stainless steel anchor type main agitator shaped to contour of kettle
- ◆ Removable nylon blades scrape entire kettle surface
- ◆ 304 stainless steel secondary counter-rotating beater located between center shaft and outside arm of main agitator
- ◆ Main agitator and secondary beater are bayonet mounted for easy, quick removal for cleaning or when kettle is to be used as a stationary or tilt kettle without the mixing mechanism
- ◆ Actuator-assisted agitator, scraper and bridge lift
- ◆ Positive quick acting rim lock and latch mechanism
- ◆ Safety device prevents high speed starts
- ◆ Mixing device stops when bridge is lifted
- ◆ Two speed agitator switch
- ◆ 15 : 1 gear head reduction ratio
- ◆ 2.6 : 1 secondary beater / main agitator ratio

Legion equipment is built to comply with applicable standards for manufacturers. Approval agencies may include ASME, NSF, UL, ETL, AGA, CSA, CGA, and others. Legion reserves the right of design improvement or modification as warranted.

DESIGN FEATURES

Call for supplemental information regarding options

- ☐ Alternate rim lock mechanism location
- ☐ Single or twin design
- ☐ Customized frame design
- ☐ 10 : 1 gear head reduction ratio
- ☐ 25 : 1 gear head reduction ratio
- ☐ 1.57 : 1 beater / scraper ratio
- ☐ 1.47 : 1 beater / scraper ratio

Select mixer voltage: ☐ 115V* ☐ 208V ☐ 230V ☐ 460V

Select mixer phase: ☐ 1 ☐ 3

Select mixer hertz: ☐ 50 ☐ 60

*1/3 HP motor only.

Note: Not all kettle options are available on kettles with mixers.

AGITATOR MOTOR HORSEPOWER AND R.P.M.

Standard gear head ratio is 15 : 1

Standard main agitator / secondary beater ratio 2.6 : 1

GAL.	HORSEPOWER		R.P.M. MAIN AGITATOR*	R.P.M. SECONDARY BEATER*
5 - 10	Single speed	1/3	17	43
20 - 30	High	1	46	120
	Low	1/2	23	60
40 - 60	High	1 1/2	46	120
	Low	3/4	23	60
80 - 100	High	2	46	120
	Low	1	23	60

*Based on standard gear head ratio and standard main agitator and secondary beater ratio. Contact Legion for applicable information on optional gear head ratio and main agitator and secondary beater ratios.

Revision 999



LEGION The Finest American Quality Since 1897

LEGION INDUSTRIES, INC. ♦ 69 MAIN ST. ♦ DALLAS, PA 18612 ♦ (800) 833-9803 ♦ (570) 675-1575 ♦ FAX: (570) 675-7551

MODEL LM MIXER

SINGLE SHAFT PORTABLE MIXER
CLAMP OR FIXED MOUNT
MADE IN USA

MIXER HEADS

STANDARD FEATURES



- ◆ Easy-positioning handle facilitates proper in-tank placement
- ◆ Standard Dura-Mix motor is specifically designed for mixer service
- ◆ Motor and shaft are coupled directly with pilot and keyway for accurate alignment and positive connection
- ◆ One piece aluminum housing provides exact alignment and superior mechanical strength
- ◆ Positive chuck grips the tapered flat on the mixer shaft to prevent unintentional shaft release. For added stability, rigid coupling is standard for longer shafts. Coupling is welded to the shaft.
- ◆ Built-in dampener pad between housing ball and clamp socket minimizes vibration.
- ◆ Clamp mount or fixed mount
- ◆ Mixer adjusts 90° vertically, 360° horizontally for optimal in-tank positioning.
- ◆ High-performance impellers to meet specific mixing requirements

Model LGB-60 with custom clamp mount portable mixer
and custom cut-out lid

DESIGN FEATURES

Call for supplemental information regarding options

- ☐ Custom fixed mount position
- ☐ Custom clamp mount position

Select voltage: ☐208V ☐240V ☐380V ☐415V ☐440V ☐480V

Select phase: ☐1 ☐3

Select hertz: ☐50 ☐60

Mixer selection

To determine your mixer selection, identify the following:

- √ Product to be mixed
- √ Viscosity value of product to be mixed
- √ Temperature of product to be mixed
- √ Specific gravity of product to be mixed
- √ Kettle capacity in gallons

Note: Not all kettle options are available on kettles with mixers.



LEGION The Finest American Quality Since 1897

LEGION INDUSTRIES, INC. ♦ 69 MAIN ST. ♦ DALLAS, PA 18612 ♦ (800) 833-9803 ♦ (570) 675-1575 ♦ FAX: (570) 675-7551