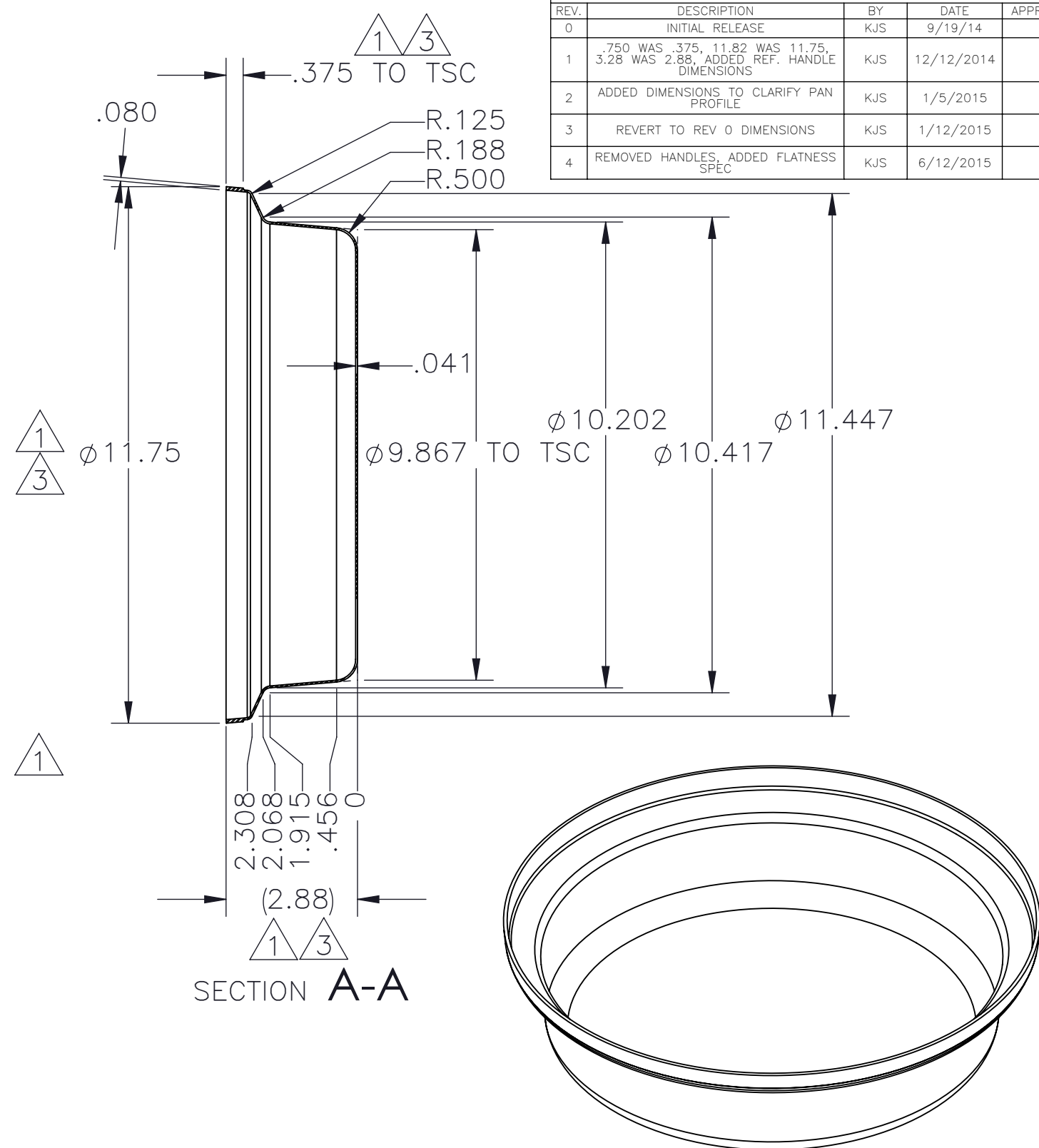


REVISIONS				
REV.	DESCRIPTION	BY	DATE	APPR'D
0	INITIAL RELEASE	KJS	9/19/14	
1	.750 WAS .375, 11.82 WAS 11.75, 3.28 WAS 2.88, ADDED REF. HANDLE DIMENSIONS	KJS	12/12/2014	
2	ADDED DIMENSIONS TO CLARIFY PAN PROFILE	KJS	1/5/2015	
3	REVERT TO REV 0 DIMENSIONS	KJS	1/12/2015	
4	REMOVED HANDLES, ADDED FLATNESS SPEC	KJS	6/12/2015	



NOTES:

1. FINISH: PART TO SATIN FINISH UNLESS OTHERWISE SPECIFIED.
2. .080" THICK TOP RING TO HAVE MIRROR POLISH ON EXTERIOR SURFACE.
3. DELETED.

4

UNLESS OTHERWISE SPECIFIED DIMENSIONS ARE IN INCHES TOLERANCES ARE:		THIRD ANGLE PROJECTION	CAD GENERATED DRAWING DO NOT MANUALLY UPDATE	DO NOT SCALE DRAWING	THE INFORMATION CONTAINED IN THIS DRAWING IS THE SOLE PROPERTY OF COOKTEK ANY REPRODUCTION IN PART OR WHOLE WITHOUT THE WRITTEN PERMISSION OF COOKTEK IS PROHIBITED.	REV. NO. 4
.XX ± .010 .XXX ± .005		TITLE	Pan, Sin Aqua Round, Small			DATE 9/19/14
DETAIL		MATERIAL 304 Stainless Steel			PAPER SIZE B	CHECKED BY
CookTek		FINISH See Notes			SCALE 1:3	DRAWN BY KJS
					SHEET 1 OF 1	PART NO. 104634