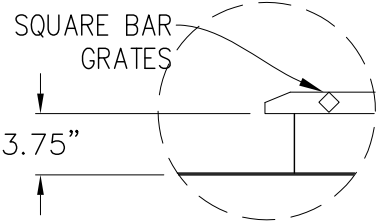


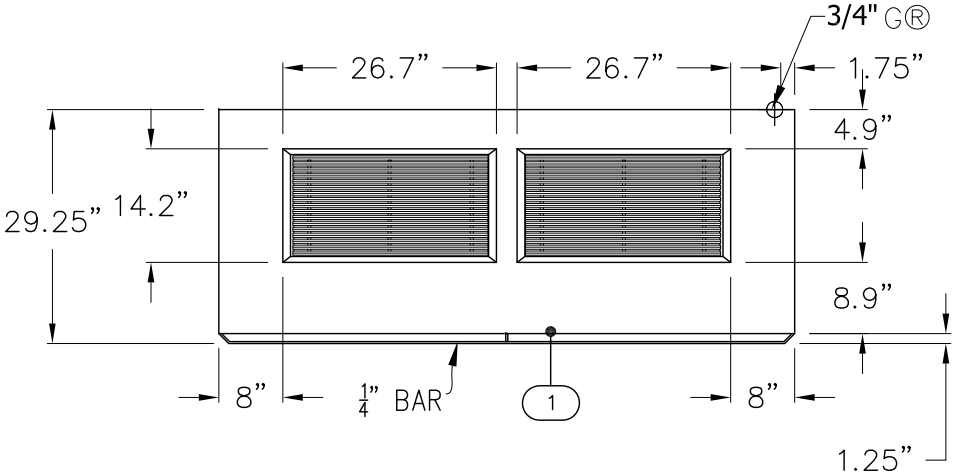
THIS DRAWING IS THE PROPERTY OF JADE RANGE LLC NO PART OF THIS DOCUMENT MAY BE COPIED OR USED WITHOUT THE WRITTEN PERMISSION.	ITEM	QTY	MODEL #	DESCRIPTION	BTU/HR	AMP	REVISIONS					
	1	1	JTRH-ROBATA, 72	TITAN 72", ROBATA RANGE (DOUBLE CHAMBER)	140,000	N/A	REV	DESCRIPTION	ECN	BY	DATE	APPROVED
					TOTAL GAS BTU/HR:	140,000	A	INITIAL DRAWING PER REQUEST	XXX	ECS	07.11.19	
					TOTAL AMPS:	N/A						
	CHANGES TO DRAWING MAY RESULT IN CHANGES TO DELIVERY DATE & COST											
THIS DRAWING IS A CONCEPTUAL LAYOUT, SUBJECT TO CHANGES AS THE FINAL MANUFACTURING PARTS ARE CREATED.												

NOTE:

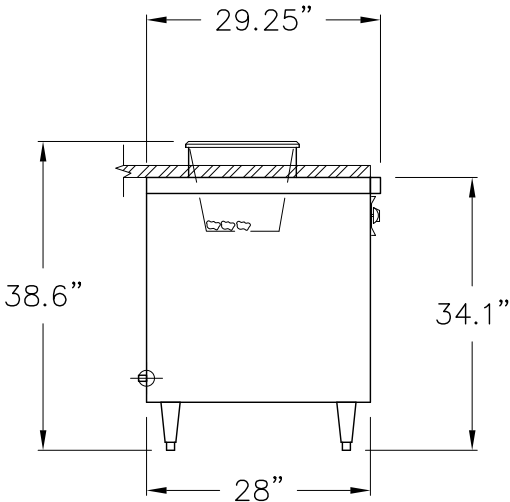
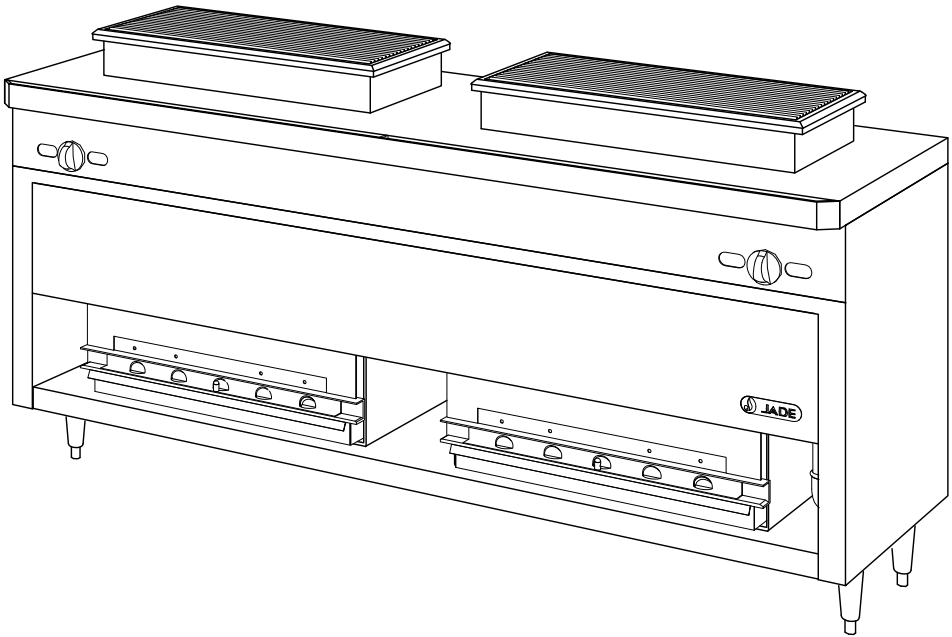
- All units ship assembled unless otherwise specified. Jade Range ships salamanders and cheesemelters range mounted and line-ups & suites ship in as large of sections as possible for easier assembly onsite at the time of install.



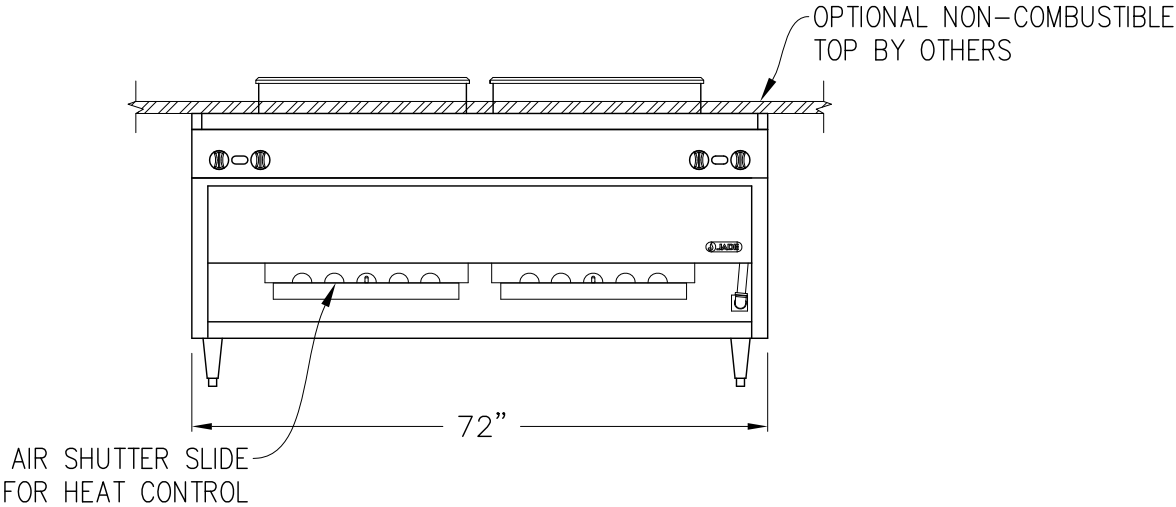
DETAIL A



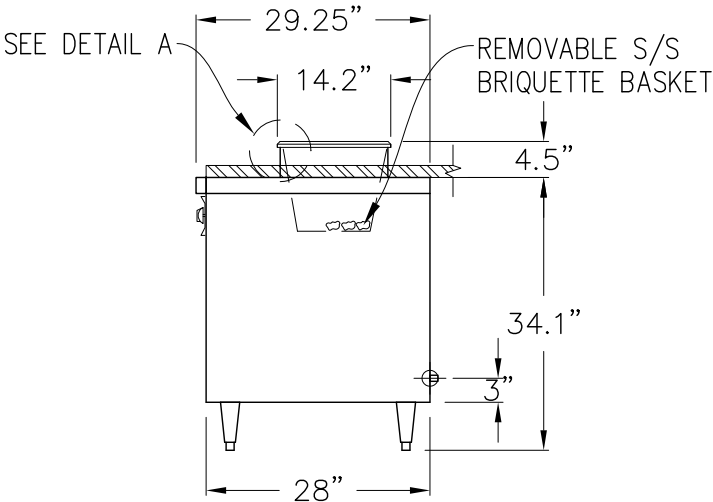
PLAN VIEW



SIDE VIEW



ELEVATION



SIDE VIEW

MIN 6" CLEARANCE  
ABOVE FLUE PEDESTALS

GAS TYPE:	
ELEVATION:	
TO BE SPECIFIED BEFORE MFG.	

PROJECT MANAGER: CAEL GOODIN

1. ⚙️

REGULATOR AND GAS CONNECTION
- ⚡

ELECTRICAL CONNECTION
- ⚙️


DRAIN
- ❄️

REFRIGERATION
- 💧

WATER
2.

GAS SHUT-OFF VALVES AND CONNECTIONS SUPPLIED BY OTHERS.
3.

ALL ELECTRICAL WORK (INSTALLATIONS AND CONNECTIONS) MUST BE PROVIDED BY OTHERS (BY CERTIFIED ELECTRICIAN)

<div><div>JADE RANGE LLC 2650 ORBITER ST. BREA, CA 92821 -A MIDDLEBY CO.</div></div>	UNLESS OTHERWISE NOTED DIMENSIONS ARE IN INCHES AND TOLERANCES: .X±.125 .XX±.03 .XXX±.015. ANGLES ±1°				DESC <b>72" ROBATA, GAS</b>	
	MATERIAL	DRAWN	ECS	07.11.19	FOR	
		CHECKED			SIZE <b>B</b>	DWG NO <b>19323A</b>
	FINISH	APPROVED			SCALE 1/2" = 1'-0"	SHEET 1 OF 1