

Cuisine Series Heavy Duty French Top Range

Project _____
 Item _____
 Quantity _____
 CSI Section 11400
 Approved _____
 Date _____

Models

- C36-15R • C36-15S
- C36-15C • C36-15M



Model C36-15R
 Three 35,000 BTU/h 12" Open
 Burners with Three 15,000
 BTU/h 12" Hot Tops

Standard Features

- Three 15,000 BTU/h hot tops
- Three 35,000 BTU/h (NG) Garland
- Starfire open top burners
- One-piece cast iron grates and bowls over each open top burner
- Stainless steel front and sides
- Stainless steel front rail
- Stainless steel burner box
- 1-1/4" NPT front gas manifold
- Can be installed individually or in a battery
- 7" (178mm) high stainless steel stub back
- 6" (152mm) stainless steel adj. legs
- Porcelain oven interior
- R model - 4 rack positions
- C model - 3 rack positions
- R model - 1 chrome plated rack
- C model - 3 chrome plated racks
- Fully insulated oven interior
- Safety oven pilot
- Oven thermostat control: 150°-500°F (66°- 260°C) (R/C)
- Range base convection oven (C) c/w NEMA 5-15P cord & plug, 1/3 hp motor, 120V 60Hz, 0.6A
- Modular unit (M) can be mounted on Polar Cuisine refrigerated base

Options & Accessories

- Stainless steel oven interior in lieu of porcelain oven interior - NC
- Single or double deck high shelf or back riser
- Full-height stand for modular base with legs or casters
- Stainless steel intermediate shelf for cabinet base
- Stainless steel door(s) for cabinet base units
- Stainless steel back
- Continuous plate rail, 48-72" for battery installations
- Gas shut-off valves: 3/4", 1", 1 1/4" NPT (Specify)
- Gas regulator: 3/4", 1", 1 1/4" NPT (Specify)
- Gas flex hose w/ quick disconnect: 3/4", 1", 1 1/4" NPT (Specify)
- Rear gas connection: 3/4", 1", 1 1/4" NPT (Specify)
- Set of (4) flanged feet (for fastening unit to the floor)
- Set of (4) 5" polyurethane non-marking swivel casters w/front brakes
- Set of (4) 6" swivel casters, w/front brakes
- Extra oven rack
- Extension for 1/9 pans

Specifications

Garland Cuisine 36" (914mm) wide Heavy Duty Range Series. Model _____ with total BTU/h rating of _____ when used with natural/propane gas. Stainless steel front and sides. 6" (152mm) legs with adjustable feet.

Ovens - One piece oven door. Stainless steel oven interior with a heavy-duty, "keep-cool" door handle. Standard oven comes with a thermostat with a temperature range from 150° (low) to 500°F (66°-260°C).

French Tops - 12" (305mm) 35,000 BTU/h open top burner under front open - top section and 15,000 BTU/h burner under rear hot top section.

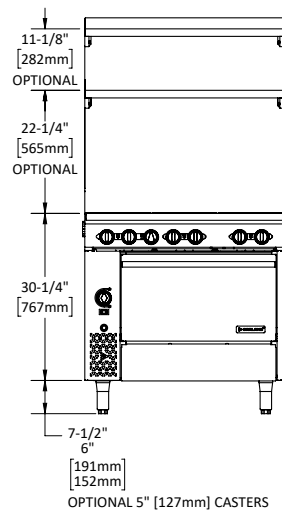
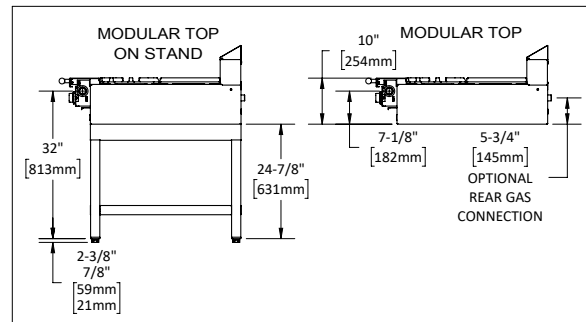
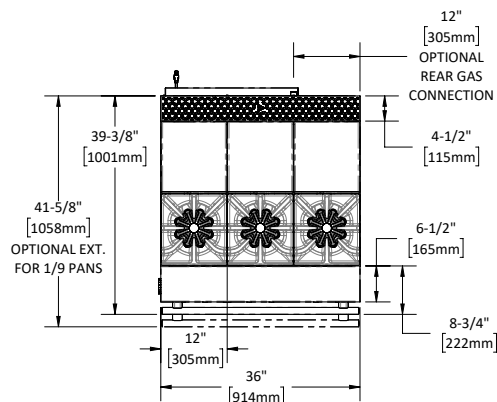
Open Burners - Garland Starfire 12" open burners with 35,000 BTU/h (NG) per burner with center pilot and one-piece cast iron grates and bowls.

NOTE: Range-based convection oven models can be located in the middle of a battery, banked back-to-back with other equipment, and can be positioned against a wall.

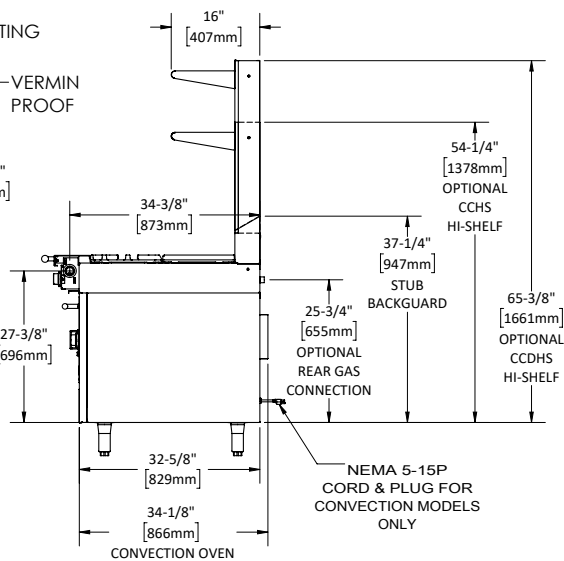
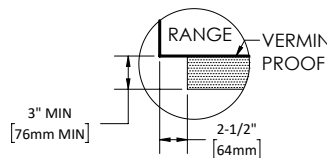
NOTE: Ranges supplied with casters must be installed with an approved restraining device.



Cuisine Series Heavy Duty French Top Range



CURB/DAIS MOUNTING



Model #	Description	Total BTU/h NAT. Gas	Total BTU/h Propane	Shipping		Individual Burner Ratings (BTU/h)					
				Cu Ft	lbs/kg	Burner	NAT.	PRO.	Burner	NAT.	PRO.
C36-15R	(3) 12" (305mm) French Tops/ Standard Oven	190,000	179,000	53	600/272	Open Top	35,000	33,000	Std. Oven	40,000	35,000
C36-15C	(3) 12" (305mm) French Tops/ Convection Oven	187,000	179,000	53	600/272	12" Hot Top	15,000	15,000	Conv. Oven	37,000	35,000
C36-15S	(3) 12" (305mm) French Tops/ Storage Base	150,000	144,000	53	414/188	Interior Dimensions: In (mm)					
C36-15M	(3) 12" (305mm) French Tops/ Modular Top	150,000	144,000	30	329/149						

*1/3 hp motor 120V 60Hz 0.6A c/w NEMA 5-15P cord and plug

Combustible Wall Clearance	
Sides	Back
10" (254mm)	6" (152mm)

Product	Height	Width	Depth
Standard Oven	13-1/2 (343)	26-1/4 (667)	29 (737)
Convection Oven	13-1/2 (343)	26-1/4 (667)	25 (635)
Cabinet Base	20-1/2 (521)	32-1/4 (819)	31 (787)

Gas Pressure	NAT.	PRO.
Minimum Supply	7" WC	11" WC
Manifold Operating Pressure	6" WC	10" WC
Gas Manifold 1-1/4" NP		

Garland reserves the right to make changes to the design or specifications without prior notice.

Garland Commercial Ranges Ltd.
1177 Kamato Road,
Mississauga, Ontario
L4W 1X4 CANADA

General Inquires 1-905-624-0260
USA Sales, Parts and Service 1-800-424-2411
Canadian Sales 1-888-442-7526
Canada or USA Parts/Service 1-800-427-6668

www.garland-group.com
7904
01/24

