

Master Series Griddle Range Attachment

Project _____
Item _____
Quantity _____
CSI Section 11400
Approved _____
Date _____

Master Series Griddle Range Attachment

Models

- MST7S
- MST7T
- MST7S-E
- MST7T-E



Model MST7S
17" Range Attachment w/Valve
Controlled Griddle
with Low Profile Backguard
(valve control panel not as depicted)

Standard Features

- Stainless steel front and sides
- Stainless steel door
- 6" (152mm) chrome steel adj. legs
- 30,000 BTU (8.78 kW), "H" type burner
- 1" (25mm) thick Steel griddle plate
- 2-5/16" (59mm) high welded stainless steel splash guards, sides & back
- Clip on stainless steel backsplash for griddle plate removable stainless steel grease drawer
- Hi-Lo valve control
- Aluminized steel under all cooking surface
- Storage base interior of aluminized steel
- Electric Spark ignition on all pilots
- Suffix -E models
- Sentry total flame failure protection for all burners

Options & Accessories

- Stainless main back
- Stainless steel common front rail up to 102" (2591mm) wide (two or more units in a battery)
- Rear gas connection, 3/4" or 1" NPT
- Gas regulator 3/4" or 1-1/4"
- Gas shut off valve; 3/4", 1" or 1-1/4" NPT
- Gas flex hose & quick disconnect (3/4", 1" or 1-1/4" NPT x 5') w/ restraining device, please specify
- End caps and cover (NC, specify)
- Polyurethane non-marking swivel casters (4) w/front brakes
- 6" (152mm) stainless steel adjustable legs
- Modular stand, (T model)
- Storage base shelf of aluminized or stainless steel
- Stainless steel tubular high shelf, single or double deck
- Stainless steel backguard: 10" (354mm), 17" (432mm) or 33" (838mm) high
- 230 volt, 50 cycle components, electric ignition (export)

Specifications

The 1" (25mm) thick steel griddle plate is 17" wide by 24-3/4" deep, (433mm x 629mm) and bordered by side and rear continuous-welded stainless steel splash guards.

The 30,000 BTU, (8.78 kW), "H" burner controlled by a Hi-Lo valve provides uniform heat. Sentry total flame failure protection for all burner.

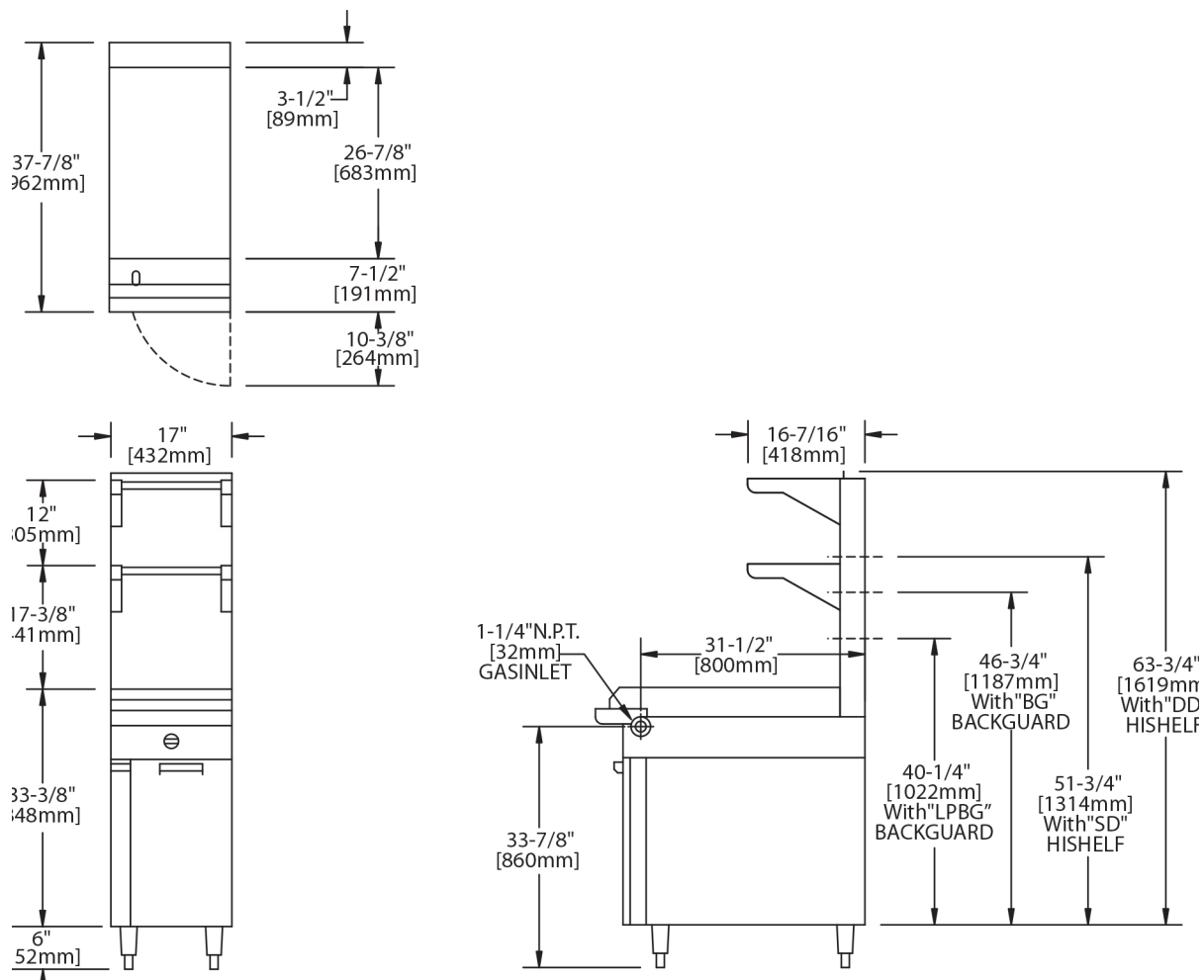
Heavy gauge aluminized steel radiation baffle requires no fire brick, heats evenly, increases thermal efficiency.

Natural gas or propane.

Also available with modular top, suffix T.

NOTE: Attachments supplied with casters must be installed with an approved restraining device.





Product	Width:	Depth:	Height: In(mm)	Height: In(mm)	Storage Base Interior: in(mm)		
	In(mm)	In(mm)	(w/ NSF Legs)	(w/o NSF Legs)	Width	Depth	Height
MST7S	17(432)	38(965)	36-3/8(924)	30-3/8(772)	14(356)	32-1/2(826)	20-1/2(519)
MST7T	17(432)	38(965)	36-3/8(924) w/stand	9-1/2(241) w/o stand*	N/A	N/A	N/A

*Modular top has 1-1/2" seating flanges.

INPUT-BTU/hr (Natural Gas)	MST4S	MST4T
Input	30,000 (8.78kW)	60,000 (17.57kW)
Inlet/Manifold Size	1-1/4 NPT	1-1/4 NPT

S=Range w/Storage Base T=Modular Top

Installation Notes			Shipping (Lb/Kg) - Cu Ft
Combustible Wall Clearances ¹	Entry Clearances	Operating Pressure	
Sides: 14" (356mm)	Crated: 22 1/4" (565mm)	Natural: 6" WC (15mbar)	MST7S 260/118 - 26 MST7T 155/70 - 9
Back: 6" (152mm)	Uncrated: 17-1/4" (438mm)	Propane: 10" WC (25mbar)	

¹NOTE: Installation clearance reductions are applicable only where local codes permit.

Electrical characteristics for models with Suffix - E: 120VAC single phase 60 Hz, 1 amp 6 ft. (1.8m) NEMA 5-15P cord and plug provided. 230VAC export direct connect single phase 50 Hz, 1 amp.

Gas input ratings shown here are for installations up to 2,000 ft. (610m) above sea level. Specify altitudes over 2,000 ft.

Please specify gas type when ordering.

Garland reserves the right to make changes to the design or specifications without prior notice.

Garland Commercial Ranges Ltd.
1177 Kamato Road,
Mississauga, Ontario
L4W 1X4 CANADA

General Inquires 1-905-624-0260
USA Sales, Parts and Service 1-800-424-2411
Canadian Sales 1-888-442-7526
Canada or USA Parts/Service 1-800-427-6668

www.garland-group.com
8163
03/25

