



FULL JACKET ELECTRIC STEAM TRI-LEG KETTLE



OPERATION SHALL BE BY:

Electrically, self-generating closed steam system equipped for operation on:

- ☐ 208 VAC, 1 phase, 50/60 Hz (12 to 18 kW only)
- ☐ 208 VAC, 3 phase, 50/60 Hz
- ☐ 220 VAC, 1 phase, 50/60 Hz (12 to 18 kW only)
- ☐ 220 VAC, 3 phase, 50/60 Hz
- ☐ 240 VAC, 1 phase, 50/60 Hz (12 to 18 kW only)
- ☐ 240 VAC, 3 phase, 50/60 Hz
- ☐ 380/220 VAC, 3 phase, 50/60 Hz. 4 wire
- ☐ 415/240 VAC, 3 phase, 50/60 Hz. 4 wire

MODEL	kW	CAPACITY	
KELS-20F	12	20 Gallon	76 Liter
KELS-30F	15	30 Gallon	114 Liter
KELS-40F	18	40 Gallon	152 Liter
KELS-60F	24	60 Gallon	227 Liter

OPTIONS & ACCESSORIES AT ADDITIONAL COST

- ☐ 3" (76 mm) draw-off valve (TVT-3) with perforated strainer (TPS-)
- ☐ 24 kw on 40, 60, 80 gallon
- ☐ 33 kw on 60, 80, 100 gallon
- ☐ 380 VAC, 3 Phase, 50/60 Hz.
- ☐ 415 VAC, 3 Phase, 50/60 Hz.
- ☐ 480 VAC, 3 Phase, 50/60 Hz.
- ☐ 600 VAC, 3 Phase, 50/60 Hz.
- ☐ Two piece hinged stainless steel cover (2PHC-)
- ☐ Etched gallon markings (GM-)
- ☐ Etched litre markings (LM-)
- ☐ Correctional package
- ☐ Solid state thermostat
- ☐ Single pantry faucet with swing spout (SF-12)
- ☐ Double pantry faucet with swing spout (DF-12)
- ☐ One piece lift off cover (C-)
- ☐ Triple basket assembly (TBA-)
- ☐ Solid stainless steel disc for draw-off valve (TSS-)
- ☐ Graduated measuring strip (CMS-)
- ☐ Strainer hook (SH)
- ☐ Draw-off valve hose kit (DVHK-2)
- ☐ Calibrated thermostat dial "F"
- ☐ Calibrated thermostat dial "C"
- ☐ Single pantry kettle filler (SP-KF)
- ☐ Double pantry kettle filler (DP-KF)
- ☐ Kettle heat shield (KHS-)

STANDARD CONSTRUCTION SPECIFICATIONS

Shall be a Crown Model KELS-20F, KELS-30F, KELS-40F or KELS-60F, self-generating, electric, full jacket, low height tri-leg kettle, ASME Code stamped, National Board Registered, c-CSA-us and NSF certified.

A double wall kettle interior shall form a steam jacket around the full kettle.

The jacket enclosure shall contain distilled water which is factory sealed.

The bottom of the kettle shall be of hemispherical design for superior heat circulation.

Kettle will be mounted on 3 stainless steel tubular legs fitted with a 4-hole adjustable foot for securing unit to the floor.

Construction shall be all welded #4 finish stainless steel, type 304.

The interior liner shall be standard 316 for high acid content cooking.

The controls shall be integrally mounted and shall include a power switch, thermostat, pilot light, low water light, vacuum/pressure gauge, safety relief valve and low water shut off.

Faucet bracket standard.

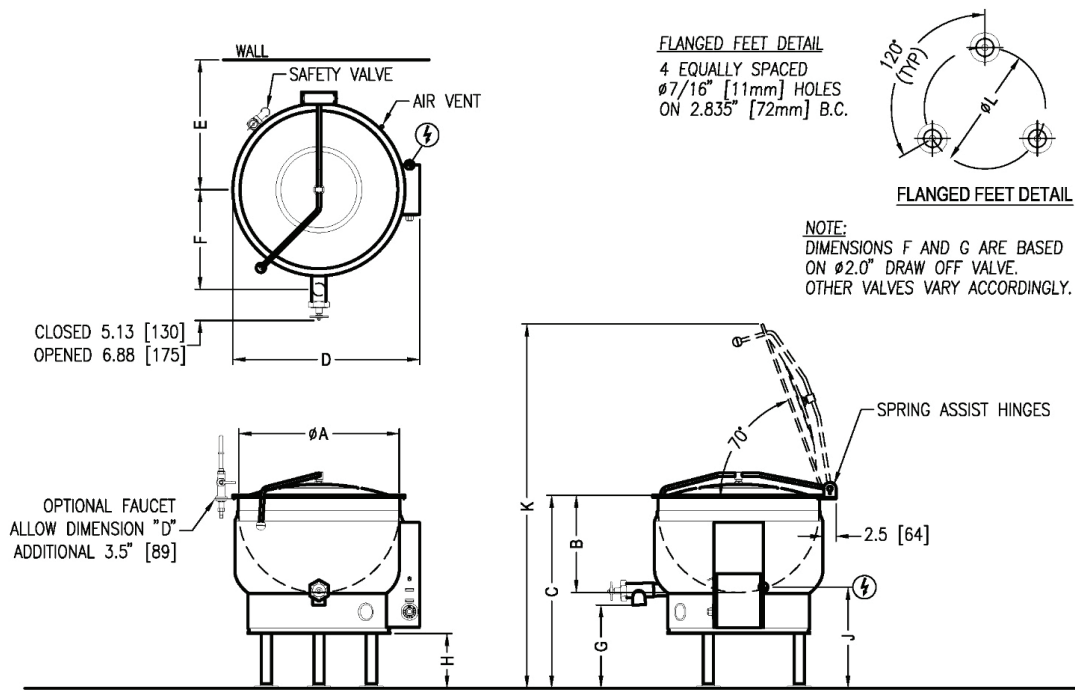
The kettle shall be standard with removable elements.

Convenience features shall include a 2" (50 mm) sanitary draw-off valve with perforated strainer and spring assist hinged stainless steel domed cover.

The kettle shall operate in a temperature range of 165°F to 285°F (74°C to 140°C) at a maximum pressure of 50 psi (345 kPa).



Approval Notes: _____

**SERVICE CONNECTIONS**

⚡ – ELECTRICAL CONNECTION : to be specified on data plate

DIMENSIONS

MODEL	CAPACITY	UNITS	A	B	C	D	E	F	G	H	J	K	L
KELS-20F	20 gallons (76 liters)	in (mm)	26" (660)	15.75" (400)	31.25" (794)	30.25" (768)	21" (533)	16.13" (410)	13.5" (343)	8.88" (225)	16.38" (416)	59" (1499)	19.63" (498)
KELS-30F	30 gallons (114 liters)	in (mm)	29.5" (749)	17.5" (445)	33.5" (851)	33.75" (857)	20.63" (524)	18" (457)	14" (356)	9.63" (244)	17.13" (435)	64.38" (1635)	22.88" (581)
KELS-40F	40 gallons (152 liters)	in (mm)	33" (838)	19.25" (489)	36.25" (921)	37" (940)	22.38" (568)	19.5" (495)	14.88" (378)	11.25" (286)	18.75" (476)	70.5" (1791)	26" (660)
KELS-60F	60 gallons (227 liters)	in (mm)	35.5" (902)	20.5" (521)	38.5" (978)	40" (1016)	23.63" (600)	21.5" (546)	15" (381)	13" (330)	20.5" (521)	75.13" (1908)	29.13" (740)

ELECTRICAL CHARACTERISTIC

AVAILABLE kW		
MODEL	STANDARD	OPTIONAL
KELS-20F	18	24
KELS-30F	18	24 or 33
KELS-40F	18	24 or 33
KELS-60F	24	33

AMPS PER LINE								
kW	PHASE	208V	220V	240V	380V	415V	480V	600V
18	1	86.5	81.8	75.0	N/A	N/A	N/A	N/A
	3	50	47.2	43.3	27.3	25	21.6	17.3
24	3	66.6	62.9	57.7	36.4	33.3	28.8	23.1
33	3	91.6	86.6	79.4	50.1	45.9	39.7	31.7

SPECIFICATIONS

MODEL	SHIPPING WEIGHT	MINIMUM CLEARANCE	
KELS-20F	245 lbs. [111 kg]	SIDES BACK	3" [76 mm]
KELS-30F	375 lbs. [170 kg]		3" [76 mm]

MODEL	SHIPPING WEIGHT	MINIMUM CLEARANCE	
KELS-40F	420 lbs. [191 kg]	SIDES BACK	3" [76 mm]
KELS-60F	460 lbs. [209 kg]		3" [76 mm]

**INTENDED FOR COMMERCIAL USE ONLY.
NOT FOR HOUSEHOLD USE.**