



K00497- Touchless Lever Activated Ice Chute

Update your current Hotel Dispenser to Touchless!

K00497- Touchless Lever Activated Ice Chute



When using the Manitowoc Touchless Lever Activated Chute users are presented with improved sanitation. The lever eliminates the need to touch a hand to the machine to dispense ice. The receptacle is responsible for assisting in dispensing the ice.

Standard Features

- Improve sanitation, eliminating the need to touch to get ice.
- Easily replaces the current rocking chute dispense mechanism. (Tools required-screw driver)
- Works with SPAs 310, 160 and SFAs 291, 191 (22" and 30" with and without water valve models)
- Touchless lever activated ice chute means the ice bucket or glass is used to dispense ice, not a hand.
- Designed for all types of receptacles: water bottles, tumblers or ice buckets

Warranty

Manitowoc will warrant the Touchless Lever Activated Ice Chute under normal and proper use for three years parts and labor from the date of replacement of the current rocking chute mechanism.

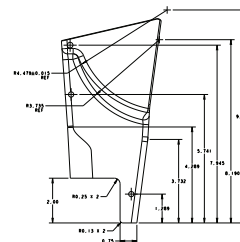
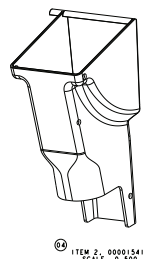
Clearance from the bottom of the chute to the grate is 8 3/4 in. (22.2 cm)
Push for ice clearance is 10.5" (26.7 cm)



Touchless Lever Activated Ice Chute is Compatible with:

Dispenser Type	22" wide	30" wide
Ice Only	SPA-160	SPA-310
Ice and Water	SFA-191	SFA-291

Lever Dimensions



For a video on how to install, visit our YouTube channel at <https://www.youtube.com/watch?v=5piNy7a0Xtk>