



TCA



TCA shown in an installation setting

Project: _____	AIA# _____
Item #: _____ Qty: _____	SIS# _____
Model #: _____	

## Tubing Chases

TC	TCA, TCB
----	----------

### Standard Features

- All stainless steel construction
- Tubing chase is 6" x 6" x 4" high
- Stainless steel drain pan with 1" recess and radius corners for easy cleaning, complete with drain fitting
- Removable stainless steel perforated drain pan insert
- Mounts between adjacent underbar equipment (there is no provision for leg mounting)
- Includes front rail and front skirt to match adjacent equipment
- Can be set in place after beverage lines are installed

### Specifications

#### Drain

- 1/2" welded tailpiece. Clear vinyl drain line is connected to the tailpiece at the factory. A 1/2" by 1/2" barbed plastic elbow is provided to make the connection at the bottom of the unit.

#### Tubing Chase

- 6" x 6" x 4" high

#### Materials

- 20 gauge stainless steel

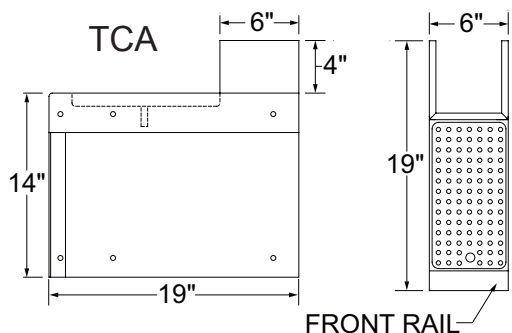
#### Mounting

- Must be mounted to adjacent piece of free standing underbar equipment
- No provisions for leg mounting, unit cannot be free standing

To view underbar installation instructions, please visit: [https://www.glastender.com/PDF/F-750-165\\_Underbar\\_Installation\\_Instructions.pdf](https://www.glastender.com/PDF/F-750-165_Underbar_Installation_Instructions.pdf)

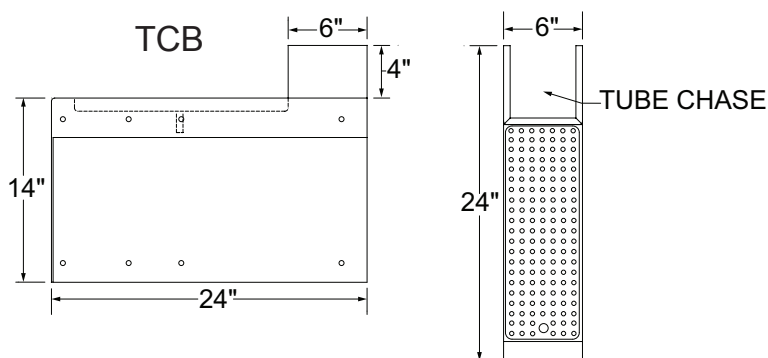
To view cleaning and care instructions, please visit: [https://www.glastender.com/PDF/F-423-011\\_ss\\_clean\\_care.pdf](https://www.glastender.com/PDF/F-423-011_ss_clean_care.pdf)

### Dimensional Information



SIDE ELEVATION

PLAN VIEW



SIDE ELEVATION

PLAN VIEW

Glastender, Inc. • 5400 N Michigan Rd • Saginaw, MI • 48604-9780  
989.752.4275 • 800.748.0423 • Fax 989.752.4444  
[www.glastender.com](http://www.glastender.com)

Specifications subject to change without notice. For current specifications please visit our website.

Approval/Notes: