



GAS

SINGLE AND DOUBLE DECK OVENS

IMPERIAL



IR-36-DS-CC

Double deck convection ovens



IR-36-LB

Single deck standard oven

MODEL NUMBERS

IR-36-DS

IR-36-LB

IR-36-DS-C

IR-36-LB-C

IR-36-DS-CC



Linear burner for even heating throughout the oven cavity.



Accommodate sheet pans front-to-back and side-to-side.



Convection oven cooks faster with less shrinkage.

CONVECTION OVEN

- 30,000 BTU/hr. (9 KW) convection oven.
- 1/4 hp blower motor ensures that products cook quickly and evenly with less shrinkage.
- Convection oven interior dimensions 26-1/2" w x 22-1/2" d x 14" h (673 x 572 x 356 mm).
- Three position switch for cooking or cool down. Fan shuts off automatically when door is open.
- Porcelainized sides, rear, deck and door lining for easy cleaning.
- Heavy duty door hinge.
- Three chrome oven racks.

STANDARD CHEF DEPTH OVEN

- Linear burner provides even heating throughout the
- 35,000 BTU (10 KW) oven.
- Unique burner baffle distributes heat flow to provide even temperatures throughout the oven cavity.
- Exclusive heat deflector reflects heat into the oven, not the floor.
- 100% safety pilot.
- Interior is 26-1/2" w x 26" d x 14" h (673 w x 660 d x 356 h mm).
- Accommodates 18" x 26" (457 x 660) sheet pans left-to-right and front-to-back.
- Porcelainized sides, rear, deck and door lining for easy cleaning.
- Heavy duty door hinge.
- Stamped inner door liner provides extra strength while optimizing heat retention.
- One chrome oven rack is included.
- Digital electronic controls
- Stainless steel exterior
- Rugged 1/2 HP 2 speed motor per oven
- Most spacious oven interior available
- Curved corners for easy cleaning

IMPERIAL

1128 Sherborn Street | Corona, CA 92879 | 800.343.7790 | imperialrange.com | imperialsales@imperialrange.com

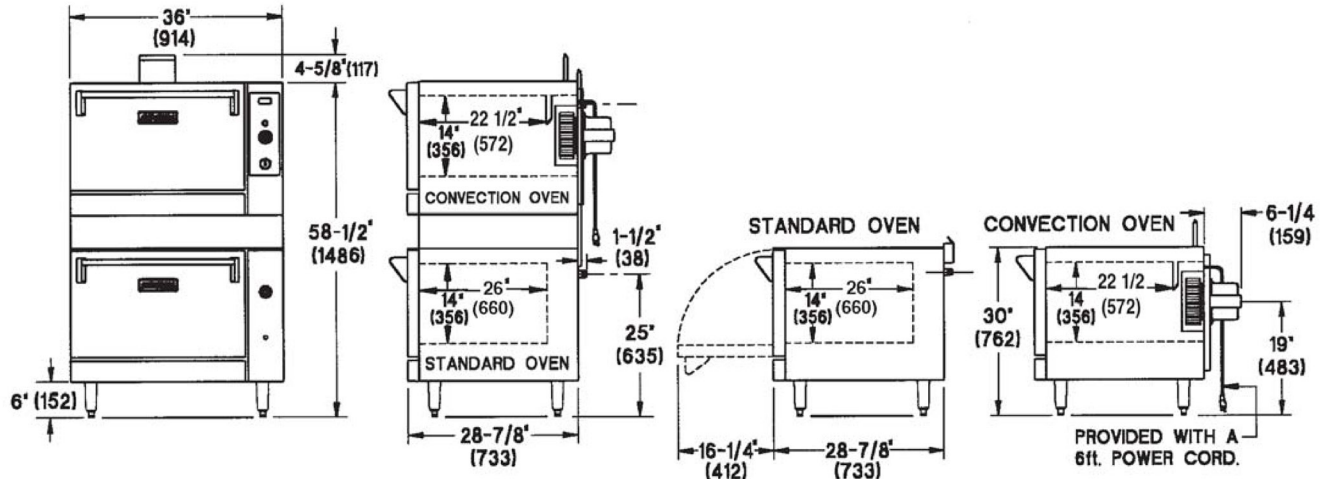
© 2025 Imperial Commercial Cooking Equipment Imperial reserves the right to change specifications at any time without prior notice and without any obligation for past or future equipment purchases. Visit www.imperialrange.com for specification updates



GAS

IMPERIAL

SINGLE AND DOUBLE DECK OVENS



SINGLE DECK OVENS

MODEL	DESCRIPTION	GAS OUTPUT BTU	GAS OUTPUT KW	SHIP WEIGHT KG	SHIP WEIGHT LBS	DIMENSIONS	CRATED DIMENSIONS
IR-36-LB	(1) Standard Oven	35,000	10 KW	186	410	36"W x 28-7/8"D x 30"H (914 x 733 x 762 mm)	38 1/2"W x 39"D x 29"H (978 x 991 x 737 mm)
IR-36-LB-C	(1) Convection Oven	30,000	9 KW	218	480		

DOUBLE DECK OVENS

MODEL	DESCRIPTION	GAS OUTPUT BTU	GAS OUTPUT KW	SHIP WEIGHT KG	SHIP WEIGHT LBS	DIMENSIONS	CRATED DIMENSIONS
IR-36-DS	(2) Standard Ovens	70,000	21 KW	375	825	36"W x 28-7/8"D x 58 1/2"H (914 x 733 x 1486 mm)	38 1/2"W x 39"D x 62"H (978 x 991 x 1575 mm)
IR-36-DS-C	(1) Standard Oven and (1) Convection Oven	65,000	19 KW	392	865		
IR-36-DS-CC	(2) Convection Ovens	60,000	17 KW	410	905		

MANIFOLD PRESSURE		MANIFOLD SIZE
NATURAL GAS	PROPANE GAS	
5.0" W.C.	10.0" W.C.	

CLEARANCE REQUIREMENTS

For use only on non-combustible floors with legs or casters; or 2 1/4" (57 mm) overhang is required when curb mounted. Provide 0" clearance from non-combustible side and rear walls. Provide 6" (152mm) minimum clearance from combustible side walls and 0" from combustible wall at rear.

Two speed motor - 1/2 HP, 1725/1140 RPM

OPTIONS AND ACCESSORIES

- Cook and Hold computer controls
- Stainless steel back enclosure
- Direct connect vent
- Heavy duty casters, set of 4
- Stack kit with 6" (152) stainless steel legs
- Stainless steel solid doors
- Stainless steel bottom shelf and adjustable rack supports
- Stainless steel bottom shelf only for stand
- Extra oven racks
- 480 volt



EXTERIOR

- Stainless steel exterior, except back. Reflects a quality, professional look for exhibition cooking.
- Welded and finished seams
- Stainless steel legs
- Easy to clean and maintain
- One year parts and labor warranty

MADE IN USA

IMPERIAL

1128 Sherborn Street | Corona, CA 92879 | 800.343.7790 | imperialrange.com | imperialsales@imperialrange.com

©2025 Imperial Commercial Cooking Equipment Imperial reserves the right to change specifications at any time without prior notice and without any obligation for past or future equipment purchases. Visit www.imperialrange.com for specification updates