

Cuisine Series Infra-Red Salamander Broiler

Project _____
Item _____
Quantity _____
CSI Section 11400
Approved _____
Date _____

Models

- CIR36
- CIR36C



Model CIR36C with legs



Model CIR36 Range Mount on a C36-6R

Standard Features

- Range mount models
 - stainless steel top, front, sides, backsplash, and bottom w/heat shield
- Counter mount CIR36C
 - stainless steel top, front, and sides
 - C/W 4" (102mm) legs
- 1/2" NPT top or back gas inlet
- Two (2) 20,000 BTU (5.86 kW) atmospheric infrared burners
- Two (2) individual Hi-Lo valve controls
- Three (3) position springbalanced, adjustable rack assembly
- Large capacity removable grease pan
- Gas pressure regulator

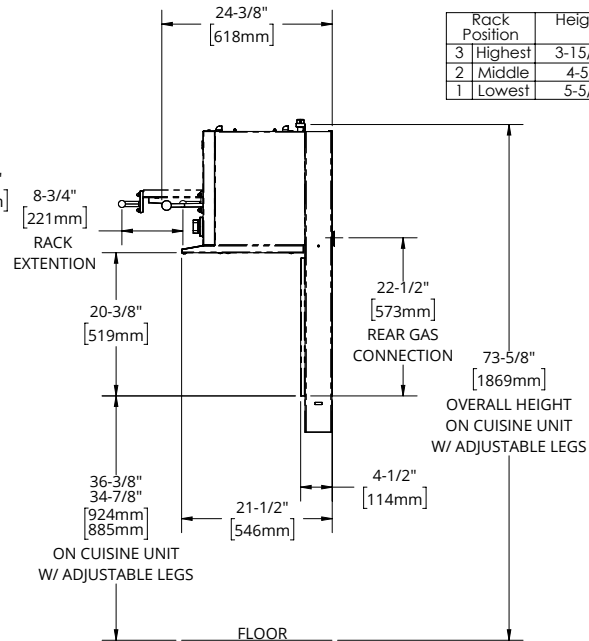
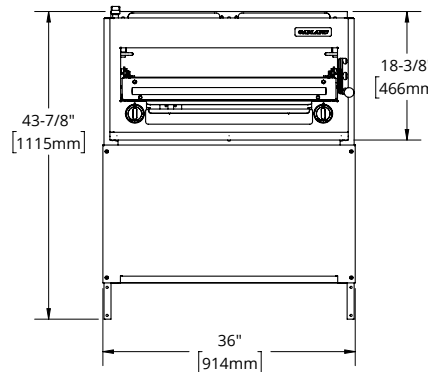
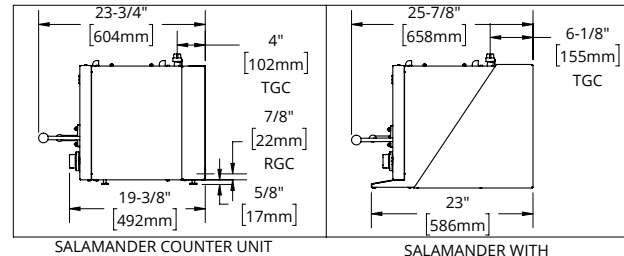
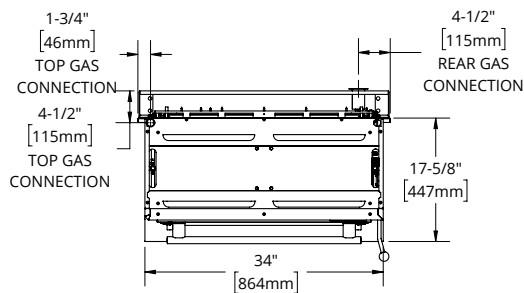
Options & Accessories

- Wall-mounting kit and stainless steel main bottom w/heat shield for model CIR36C
- Interconnecting gas piping for range-mount, models CIR36
- Stainless steel back

Specifications

Garland Cuisine Series mount gas infra-red salamander broiler Model CIR____. Available to mount over Garland Cuisine Series Heavy Duty gas ranges. Two (2) 20,000 BTU (5.86 kW) atmospheric infra-red burners. Three (3) position adjustable rack. Stainless steel top, front, sides, backsplash, and bottom w/heat shield. 40,000 BTU (11.72 kW) total (NG). Natural or propane gas. Certified to Canadian and US Standards, listed by NSF.





Rack Position	Height of Rack to Burner
3 Highest	3-15/16" (143mm)
2 Middle	4-5/8" (117mm)
1 Lowest	5-5/8" (143mm)

Rack Position	Opening Height to Cook Surface (A)
3 Highest	2-3/4" (70mm)
2 Middle	3-1/2" (87mm)
1 Lowest	4-3/8" (111mm)

Model #	Width	Use With Cuisine Series Model	Shipping		Entry Clearances: In (mm)	
			Cu Ft	lbs/kg	Crated	Uncrated
CIR36C	34" (864mm)	N/A	21	170/77	29 (737)	21 (533)
CIR36	35-1/2" (900mm)*	C36	40	200/91	29 (737)	21 (533)

*CIR36 on Cuisine series ranges is 36" (914mm)

Note: Can be mounted on left side of C48-1 and C48-1-1 with a 12" (305mm) high shelf backguard on the right (sold separately).

Operating Pressure		Combustible Wall Clearance		Total Input	
NAT.	PRO.	Sides	Back	NAT.	PRO.
6"WC (15mbar)	10"WC (25mbar)	6" (152mm)	6" (152mm)	40,000 BTU/h (11.7Kw)	32,000 BTU/h (9.4kW)

NOTE: Installation clearance reductions are applicable only where local codes permit

Gas input ratings shown here are for installations up to 2,000 ft. (610m) above seal level. Specify altitudes over 2,000 ft. Please specify gas type when ordering.

Garland Cuisine products are not approved or authorized for home or residential use, but are intended for commercial applications only. Garland Group will not provide service, warranty, maintenance or support of any kind other than in commercial applications.

Garland reserves the right to make changes to the design or specifications without prior notice.

Garland Commercial Ranges Ltd.
1177 Kamato Road,
Mississauga, Ontario
L4W 1X4 CANADA

General Inquires 1-905-624-0260
USA Sales, Parts and Service 1-800-424-2411
Canadian Sales 1-888-442-7526
Canada or USA Parts/Service 1-800-427-6668

www.garland-group.com
7921D
11/25

