

TempStar® HH-E

Tall Chamber High Temperature Sanitizing Door-type

Standard Features

- Certified as both a dishwasher and a potwasher to NSF/ANSI3 standards
- Built-in 70 °F (38.9 °C) rise booster heater with Sani-Sure™ final rinse system; 40 °F (22.2 °C) rise booster heater is available at no cost and must be specified at time of order
- Automatic tank fill
- Door actuated start
- Four (4) selectable timed cycles
- Delime/manual wash mode
- 27" (686 mm) vertical chamber clearance
- Lower counter-rotating wash arms and upper wash arm with specially designed stainless steel nozzles provide optimum spray coverage and superior cleaning action
- Split-door design accommodates installations with low ceiling heights
- Door switch
- 2 HP self-draining stainless steel wash pump
- Vent fan control shuts fan off when machine is idle
- Large scrap basket
- Single point connections for all utilities
- Field convertible from straight through to corner and vice versa (kit required)
- Low watt density electric wash tank heater
- Hi-limit thermostat and low water protection
- Detergent/rinse additive signal connection fuse box
- Front stainless steel dress panel
- Uses standard 20" X 20" (508 mm X 508 mm) racks
- Adjustable bullet feet
- Durable stainless steel construction



Specification Statement

Specified unit will be a Jackson TempStar HH-E tall chamber, high temperature sanitizing door-type dishwasher, rated by ETL Sanitation to NSF/ANSI Standard 3. Unit will be ENERGY STAR® certified and will be dual rated as both a dishwasher and a potwasher. Unit to be rated for 60 racks per hour, 0.78 gallons per rack, and will include a built-in 70 °F rise booster heater with Sani-Sure™ final rinse system, four (4) selectable timed cycles, and top mounted controls. Other features include automatic tank fill, delime mode, vent fan control, and 2 HP stainless steel wash pump motor. Constructed of durable stainless steel with adjustable bullet feet.

1-year parts and labor warranty.

Options & Accessories

- 40 °F (22.2 °C) rise booster heater (must be specified on P.O.)
- 460V Electrical
- Single Phase
- Pressure Regulator
- Drain Water Tempering Kit
- Water Hammer Arrestor
- Flanged Feet
- Door Interlock
- Security Package
- False Panel (for corner installations)
- Scaltrol
- 36-Compartment Rack 4-1/8" tall (105 mm)
- 5-5/8" tall (143 mm)
- 7" tall (178 mm)
- Combination Rack
- Peg Rack
- Sheet Pan Rack - for 18" X 26" (457 mm X 660 mm) baking pans

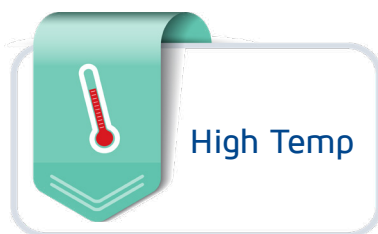


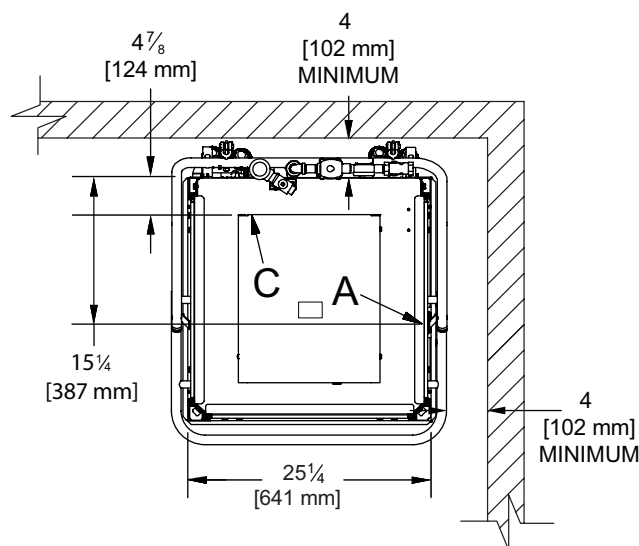
TempStar® HH-E

The TempStar HH-E tall chamber dishmachine is dual rated as both a dishwasher and a potwasher. The built-in booster heater with Jackson's exclusive Sani-Sure™ final rinse system ensures proper sanitization is achieved every cycle. Its 27" clearance easily accommodates large sheet pans and 60-quart bowls, and like all Jackson products, the TempStar HH-E provides Clean the First Time® results.

OPERATING CYCLE TIMES (Seconds) | OPERATING CAPACITY (Racks per Hour)

OPERATING CYCLE	CYCLE TIME	RACKS PER HOUR	GALLONS PER HOUR
Normal	:60	60	46.80
Medium	:123	29	22.62
Heavy	:183	19	14.82
Extra Heavy	:303	11	8.58

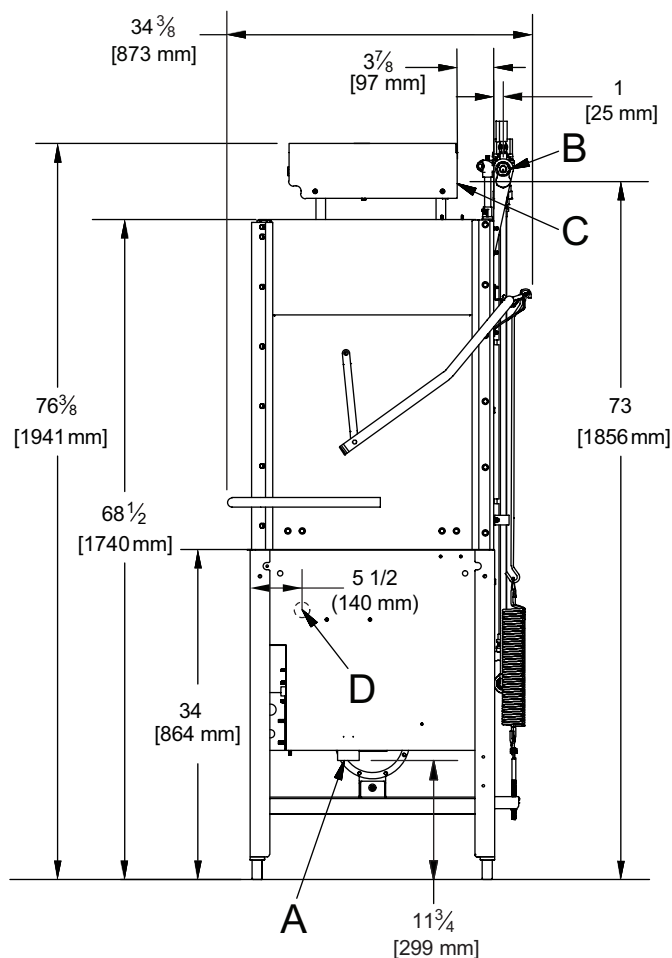
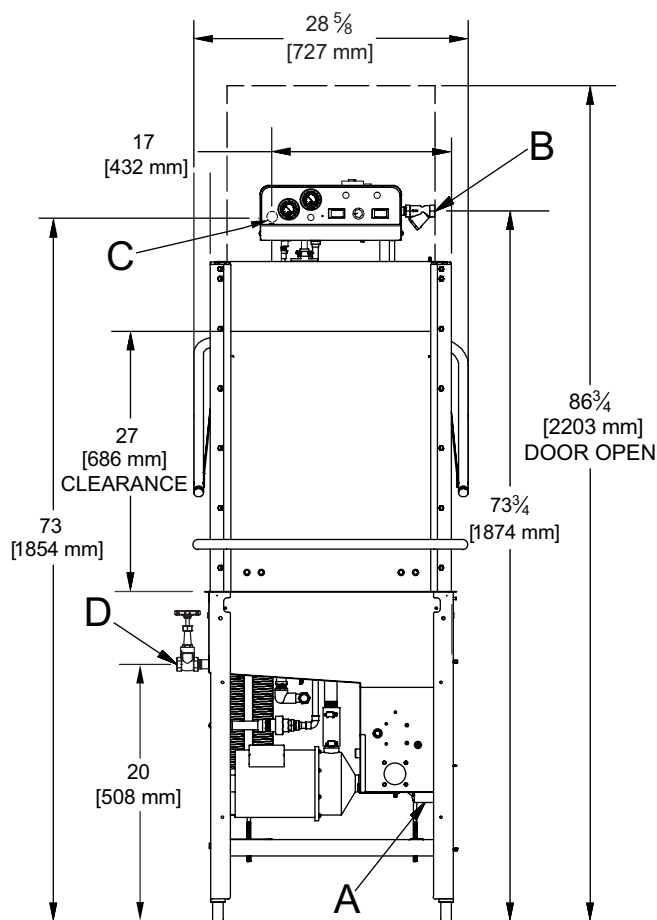




LEGEND

- A - Drain 1 1/2" NPT
- B - Water Inlet 1/2" NPT
- C - Electrical Connection
- D - Optional Steam Connection 3/4" NPT

All dimensions from the floor can be increased 1 1/8" using the machine's adjustable feet.





Warewashing Systems

TempStar® HH-E

Tall Chamber High Temperature Sanitizing Door-type

Operating Capacity (Normal Cycle)

Racks per Hour	60 (55)*
Dishes per Hour	1,500
Glasses per Hour	2,160

Operating Temperature

Wash Temperature (minimum)	
40/70 °F Rise	155 °F/68 °C
No Booster	150 °F/66 °C
Rinse Temperature (minimum)	180 °F/82 °C

Operating Cycle (seconds)

	Wash	Rinse	Dwell	Total Cycle
Normal	40	10	10	60
Medium	103	10	10	123
Heavy	163	10	10	183
Extra Heavy	283	10	10	303

Water Consumption

Gallons per Rack	0.78 (3.0 L)
Gallons per Hour	46.80 (177.2 L)
Gallons per Hour**	42.90 (162.4 L)
Wash Tank Capacity (gallons)	8.00 (30.3 L)
Booster Tank Capacity (gallons)	3.00 (11.0 L)

Water Requirements

Incoming Water Temperature	
40 °F Rise	140 °F/60 °C
70 °F Rise	110 °F/43 °C
No Booster	180 °F/82 °C
Flow Pressure (PSI)	
40/70 °F Rise	10 ± 2
No Booster	20 ± 5
Incoming Water Connection (NPT)	1/2"
Drain Connection (ID)	1 1/2"

Electrical Specifications

Wash Pump Motor (HP)	
208V/230V/460V	2
Wash Tank Heater (kW)	
208V	4.1
230V/460V	5.0
Rinse Tank Heater (kW)	
	40 °F Rise 70 °F Rise
208V	9.0 10.5
230V/460V	11.0 12.9

Model	Power Supply	Total Load	Minimum Circuit Ampacity	Maximum Overcurrent Protection
40 °F Rise	208/60/3	47.6 A	50.4 A	60.0 A
	230/60/3	51.4 A	54.2 A	70.0 A
	460/60/3	23.4 A	24.2 A	25.0 A
	208/60/1	74.2 A	77.0 A	90.0 A
70 °F Rise	230/60/1	80.9 A	83.7 A	90.0 A
	208/60/3	51.8 A	54.6 A	70.0 A
	230/60/3	56.0 A	58.8 A	70.0 A
	460/60/3	25.7 A	26.5 A	30.0 A
No Booster	208/60/1	81.4 A	84.2 A	100.0 A
	230/60/1	88.9 A	91.7 A	100.0 A
	208/60/3	22.6 A	25.4 A	35.0 A
	230/30/3	23.8 A	26.6 A	35.0 A
	460/60/3	9.6 A	10.3 A	15.0 A
	208/60/1	30.9 A	33.7 A	40.0 A
	230/60/1	33.0 A	35.8 A	50.0 A

Dimensions

Width	28 5/8" (727 mm)
Depth	34 3/8" (873 mm)
Height	76 3/8" (1941 mm)
Height with Door Open	86 3/4" (2203 mm)
Inside Clearance Height	27" (686 mm)
Wall Clearance	
Rear	4" (102 mm)
Side (corner installation)	4" (102 mm)
Drain Height	11 3/4" (299 mm)
Weight	363 lbs (165 kg)

Shipping Details

Shipping Weight	393 lbs (179 kg)
Shipping Width	33" (838 mm)
Shipping Depth	42" (1067 mm)
Shipping Height	82 5/8" (2099 mm)
Shipping Cube	66.27 cu ft
Shipping Class	200

Advisory: Jackson WWS, Inc. DOES NOT endorse "Tankless On-Demand" water heaters for use with our dishmachines. Jackson WWS, Inc. DOES endorse, and highly recommends, standard "tank" style water heaters, sized to properly handle the water heating requirements of the facility.

*Racks per hour calculated with NSF suggested load time of :05 for door-type dishmachines (straight through)

**Gallons per hour calculated with NSF suggested load time of :05 for door type dishmachines (straight through)

07610-004-50-08 [03/20/23]

Contact Jackson

Address

6209 N U.S. Highway 25E
Gray, Kentucky 40734

Telephone & Fax

T 888.800.5672
F 606.523.1799

Email

customer.service@jacksonwws.com



JACKSONWWS.COM



JACKSON WAREWASHING SYSTEMS



JACKSON WWS

We reserve the right to change specifications in this document without incurring any obligation for equipment previously or subsequently sold.