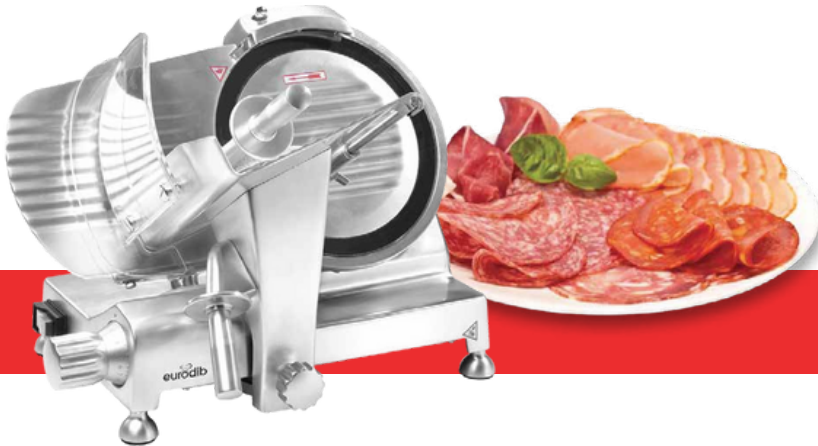


eurodib

Slicers



HBS SERIES

This Slicer is perfect for cutting deli meats and vegetables effortlessly. Great for low volume operations & easy to disassemble.

- Professional quality meat slicers, easy to clean and operate
- Blade sharpener
- Belt drive
- Perspex Protector Guard
- Waterproof and emergency shut off switch
- Robust handle
- Slice thickness: 0.2 to 12 mm
(Max. slice width: 6.25"



HBS-195JS - 8" Slicer

- **Power:** 120V, 120W, 1.1A, 5-15P
- **Dimensions:** 15.7" W x 14.7" L x 12" H
- **Net Weight:** 26.5 lbs
- **Ship Dims:** 21" W x 17" L x 15" H
- **Ship wt.** 32 lbs



HBS-220JS - 9" Slicer

- **Power:** 120V, 120W, 1.1A, 5-15P
- **Dimensions:** 17.7" W x 14.8" L x 13.7" H
- **Net Weight:** 26.5 lbs
- **Ship Dims:** 21" W x 17" L x 15" H
- **Ship wt.** 32 lbs



HBS-250L - 10" Slicer

- **Power:** 120V, 150W, 1.4A, 5-15P
- **Dimensions:** 19.7" W x 16.3" L x 14" H
- **Net Weight:** 36.3 lbs
- **Ship Dims:** 23" W x 19" L x 17" H
- **Ship wt.** 44 lbs



HBS-300L - 12" Slicer

- **Power:** 120V, 250W, 2.3A, 5-15P
- **Dimensions:** 21.8" W x 18.1" L x 16.6" H
- **Net Weight:** 52 lbs
- **Ship Dims:** 24" W x 21" L x 20" H
- **Ship wt.** 59 lbs



HBS-350L - 14" Slicer

- **Power:** 120V, 400W, 2.3A, 5-15P
- **Dimensions:** 31" W x 24" L x 19.5" H
- **Net Weight:** 132 lbs
- **Ship Dims:** 47" W x 32" L x 32" H
- **Ship wt.** 190 lbs

eurodib

US 334 Cornelia St. #272, Plattsburgh, NY 12901 | CANADA 120 rue de la Barre, Boucherville, QC J4B 2X7
1 888 956 6866 | customerservice@eurodib.com | www.eurodib.com