



# STAINLESS STEEL FABRICATED CONVENIENCE STORE SINKS

Item #: \_\_\_\_\_ Qty #: \_\_\_\_\_  
Model #: \_\_\_\_\_  
Project #: \_\_\_\_\_



**WASH, RINSE & SANITIZE**  
**In Under 5 Feet!**

MODEL	Overall Length	Bowl Size	Drbd. Size	Approx. Wt.	Approx. Cu. Ft.
K7-CS-21-EC-X	58"	10" x 14" x 10"	12"	75 lbs.	18 lbs.

**PLEASE NOTE: SINK CANNOT BE MODIFIED**



## FEATURES:

Tile edge for ease of installation.  
Three fabricated sink compartments with two drainboards.  
8-1/2" high backsplash.  
Galvanized legs with adjustable plastic bullet feet.  
3 1/2" K-6 Drain with basket.

## CONSTRUCTION:

All TIG welded.  
Welded areas blended to match adjacent surfaces and to a satin finish.

## MATERIAL:

Heavy gauge type "304" stainless steel.  
Legs are 1 5/8" diameter galvanized steel with gussets.  
1" adjustable plastic bullet feet.



**Fabricated Bowls are  
Welded Together  
at the Seams**

ACCESSORIES	Model #	Qty
FAUCETS		



**Customer Service Available To Assist You 1-800-645-3166 8:30 am - 7:00 pm E.S.T.**

For Orders & Customer Service:

Email: customer@advancetabco.com or Fax: 631-242-6900

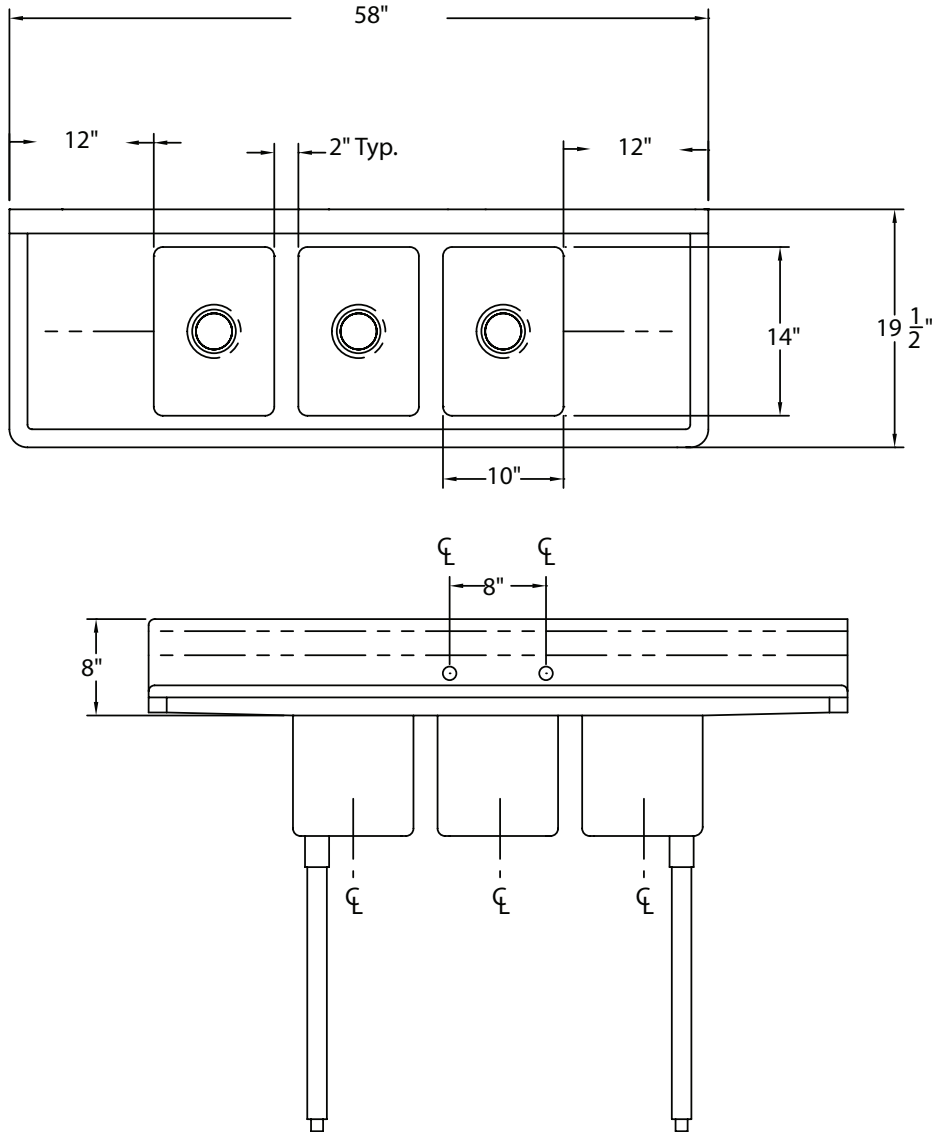
For Smart Fabrication™ Quotes:

Email: smartfab@advancetabco.com or Fax: 631-586-2933

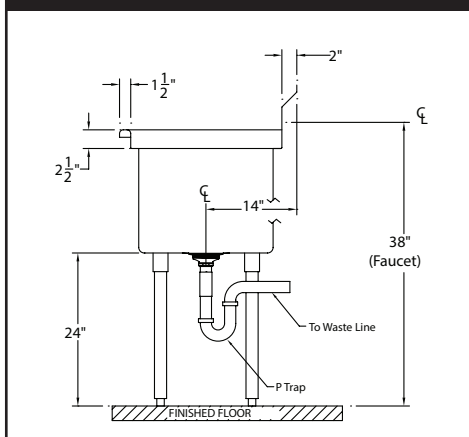
# DIMENSIONS and SPECIFICATIONS

TOL Overall:  $\pm .500"$   
Interior:  $\pm .250"$

ALL DIMENSIONS ARE TYPICAL



## PLUMBING ROUGH-IN



### MECHANICAL:

- Supply is 1/2" IPS hot & cold.
- Faucet holes on 8" centers.
- Faucets are not included (**see accessories**).
- Waste drains are 1 1/2" IPS S/S basket type, located in center of sink bowl, and are included.



## SECTION

