



The Signature of Quality

FEDERAL INDUSTRIES

A Standex Company

215 Federal Avenue
Belleville, Wisconsin 53508-9201

Phone: 800-356-4206

Fax: 608-424-3234

Email: Geninfo@Federalind.com

Website: Federalind.com

Project Name: _____

Item #: _____

Model #: _____ Qty: _____

Approval: _____

AIA #

SIS #

VISION SERIES - Square End Self-Serve Refrigerated Case - 78"

Designed with impulse sales in mind. Get maximum return from an attention-grabbing merchandiser and increase profits.



Model VRSS4878S
Shown with Options

OPTIONAL ACCESSORIES

- | | |
|--|--|
| <input type="checkbox"/> White interior (including shelves) | <input type="checkbox"/> Graphics package |
| <input type="checkbox"/> Stainless steel interior (including shelves) | <input type="checkbox"/> Solid end panels (mirrored interior) |
| <input type="checkbox"/> Stainless steel or glass shelves in lieu of black | <input type="checkbox"/> Reflective end glass |
| <input type="checkbox"/> Deli meat pegs | <input type="checkbox"/> Clear or reflective glass, sliding rear doors (Solid hinged on 36" cases) |
| <input type="checkbox"/> 3500K LED lights below shelves | <input type="checkbox"/> 6" legs (152mm) |
| <input type="checkbox"/> Additional lighted 3500K LED shelf | <input type="checkbox"/> Seismic legs |
| <input type="checkbox"/> Field Install - High-capacity condensate evaporator assembly - Separate (1500W 120V, 15 AMP circuit required) | <input type="checkbox"/> Skirt w/4" casters or legs |
| <input type="checkbox"/> Condensate evaporator assembly (field install) (separate 120V, 20A circuit required) (remote only) | <input type="checkbox"/> 2 1/2" (63.5mm) recessed or 4" (101.6mm) casters (self-contained models only) (Weight limits may apply) |
| <input type="checkbox"/> Remote refrigeration with condensate pump (EEV included) | <input type="checkbox"/> Joining kit for continuous line-ups (not available with casters) |
| <input type="checkbox"/> Self-cleaning condenser | <input type="checkbox"/> Front wire display basket |
| <input type="checkbox"/> Rear air intake / rear discharge | <input type="checkbox"/> Front cart bumper |
| <input type="checkbox"/> Stainless steel exterior finish | <input type="checkbox"/> Roll-Down locking security cover (black, white, or gray) Stand alone models only |
| <input type="checkbox"/> Premium exterior laminate | <input type="checkbox"/> Black polycarbonate removable locking security cover |

*Additional options available on the website and price list.

MODEL	DIMENSIONS (Includes End Panels)
<input type="checkbox"/> VRSS3678S	36 x 33 x 78 (in) 914 x 838 x 1981 (mm)
<input type="checkbox"/> VRSS4878S	47.25 x 33 x 78 (in) 1200 x 838 x 1981 (mm)
<input type="checkbox"/> VRSS6078S	59.25 x 33x 78 (in) 1505 x 838 x 1981 (mm)
<input type="checkbox"/> VRSS7278S	71.25 x 33x 78 (in) 1810 x 838 x 1981 (mm)

STANDARD FEATURES

Model Features

- Black interior including shelves
- Stainless steel display deck
- Tempered glass ends
- Black powder coated base frame
- Moisture resistant end panel construction
- Choice of standard colors on lower millwork panel
- Black trim
- Adjustable leg levelers
- Cord & plug, self-contained only
- Front air intake / front discharge
- Energy saving night curtain
- Matches profile of the VRSS & VHSS models

Refrigeration

- R290 Refrigerant
- Electronic temperature control maintains 38°-40°F (3.3°-4.4°C) Note: Case temperatures will vary if the air curtain is disrupted.
- Digital thermometer
- Clear coil on demand defrost
- Coated evaporator coil

Shelving

- Four tiers of adjustable black metal shelves with black price tag molding.
- Shelves can be flat or slanted down at 10°.

Lighting

- 3500K LED top light

Agency Approvals

- UL, C-UL and UL Sanitation listed to NSF-7, Type I conditions.
- DOE 2017 compliant



WARRANTY*
One year Parts and Labor
2nd thru 5th year part only
service compressor
(U.S.A. and Canada)




Note: Information is subject to change at any time. Visit www.federalind.com for the most current specs.

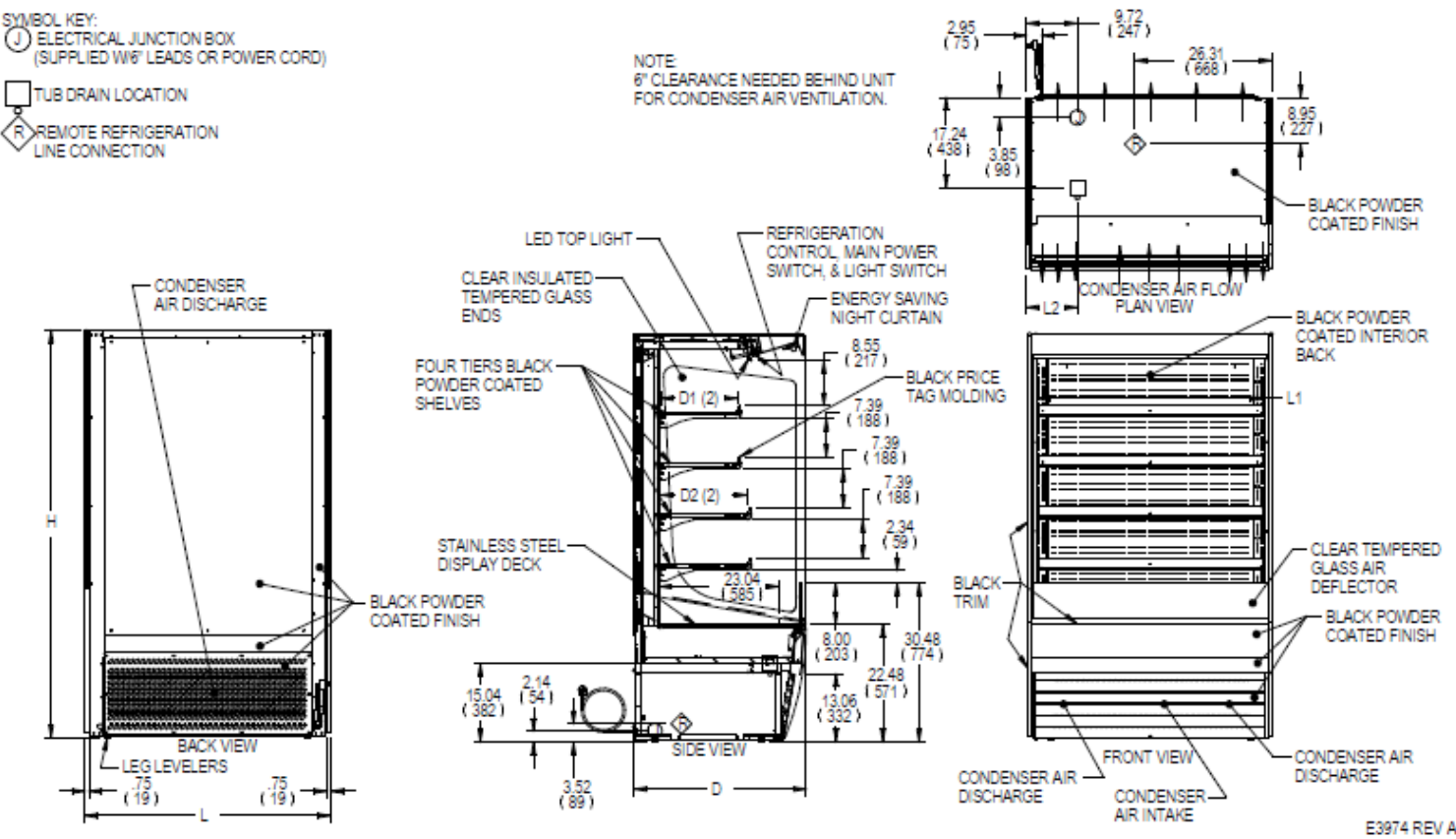
AIA #	VISION SERIES - Square End Self-Serve Refrigerated Case - 78"
SIS #	
Product Specifications	

Intended Environment: Type I - Designed to operate in maximum ambient conditions of 75°F (24°C) and 55% relative humidity.		
Zone	Intended Product To Be Displayed	Avg Prod Temp °F/°C
All	Packaged Refrigerated Products	38°F / (3.3°C)

DIMENSION: xx"/(mm)
 DIMENSION TOLERANCE +/- 0.25 (6.4)

SYMBOL KEY:

SYMBOL KEY:
 ELECTRICAL JUNCTION BOX
 (SUPPLIED W/6' LEADS OR POWER CORD)
 TUB DRAIN LOCATION
 REMOTE REFRIGERATION
 LINE CONNECTION



MODEL	DIMENSIONS			TUB DRAIN	SHELVING			INTERIOR VOLUME CU FT	ELECTRICAL 2 WIRE + GROUND	STANDARD CONNECTION CORD & PLUG			REFRIGERANT	CONDENSATE REMOVAL	SHIP WEIGHT LBS KILO	PERMANENT CONNECT		REFRIGERANT	BTU'S @ + 20°	CONDENSATE REMOVAL	SHIP WEIGH LBS KILO
	L	D	H		L1	D1	D2			AMPS	MAX FUSE SIZE	NEMA CORD &				AMPS	MAX FUSE				
VRSS3678S	36	33	78	6.74	32.25	14.634	16.634	19.47	120/60/1	16.0	20	NEMA 5-20P	R290	INTEGRATED PAN	740	2.5	15	R449A	6,720	PUMP	695
	914	838	1981	171	819	372	423								336						
VRSS4878S	47.25	33	78	13.49	43.25	14.634	16.634	25.74	208-240/60/1	11.0	20	NEMA 6-20P	R290	INTEGRATED PAN	820	3.0	15	R449A	9,580	PUMP	775
	1200	838	1981	343	1099	372	423								372						
VRSS6078S	59.25	33	78	14.12	55.25	14.634	16.634	32.58	208-240/60/1	16.0	20	NEMA 6-20P	R290	INTEGRATED PAN	1030	3.5	15	R449A	11,200	PUMP	985
	1505	838	1981	359	1403	372	423								467						
VRSS7278S	71.25	33	78	20.12	67.25	14.634	16.634	39.42	208-240/60/1	16.0	20	NEMA 6-20P	R290	INTEGRATED PAN	1080	3.5	15	R449A	12,300	PUMP	1040
	1810	838	1981	511	1708	372	423								490						

- Due to continuing engineering improvements, specifications are subject to change without notice
- Case temperature will vary if the air curtain is disrupted.

DOE 2017
 Energy Efficiency
 Compliant



