



C-FBB-24



## Specifications

### Legs

- 1-5/8" diameter, 16 gauge stainless steel
- Stainless steel bullet feet

### Materials

- 20 gauge stainless steel

Project: _____	AIA# _____
Item #: _____ Qty: _____	SIS# _____
Model #: _____	

## Filler Boards

### C-FB

C-FBA-18, C-FBA-24, C-FBB-18, C-FBB-24

## Standard Features

- All stainless steel construction
- Adjustable stainless steel bullet feet
- One-piece seamless top and backsplash

## Product Information

Choice Filler Boards are constructed of all stainless steel and include a flat work surface for situations where a draining work surface is not desired. Filler boards are not typically used for glass storage, but are more commonly used as a place to set a printer, POS system, or cash drawer.

## Configurable Options

C-LSA-F	Left side splash for C-FBA models
C-RSA-F	Right side splash for C-FBA models
C-LSB-F	Left side splash for C-FBB models
C-RSB-F	Right side splash for C-FBB models

## Accessories

C-SR-18	18" single speed rail
C-SR-24	24" single speed rail
C-DR-18	18" double speed rail
C-DR-24	24" double speed rail

To view cleaning and care instructions, please visit:  
[https://glastender.com/PDF/F-423-011\\_ss\\_clean\\_care.pdf](https://glastender.com/PDF/F-423-011_ss_clean_care.pdf)

Glastender, Inc. • 5400 North Michigan Road • Saginaw, MI • 48604-9780  
989.752.4275 • 800.748.0423 • Fax 989.752.4444  
<https://glastender.com>

Specifications subject to change without notice. For current specifications please visit our website.

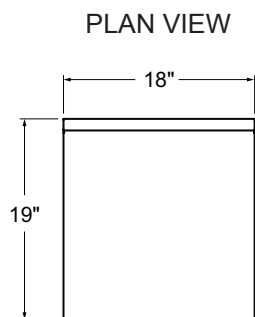
Approval/Notes:

## Choice Filler Boards

### Dimensional Information

#### "A" Depth-19" Deep Models

C-FBA-18



FRONT VIEW

SIDE VIEW

19"

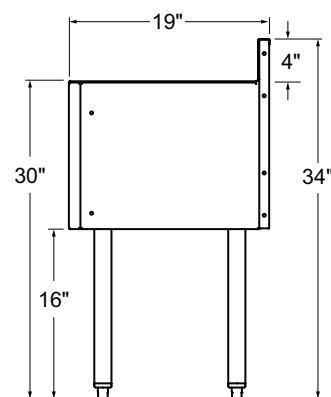
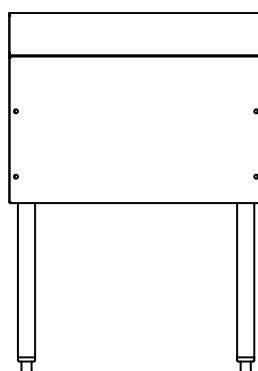
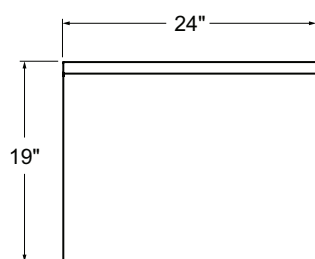
30"

16"

4"

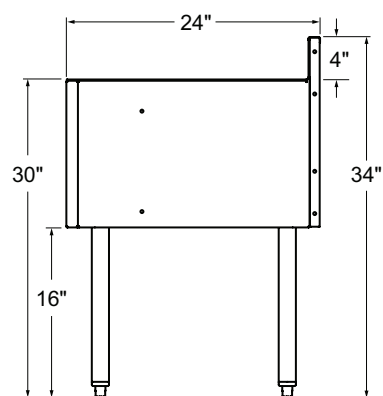
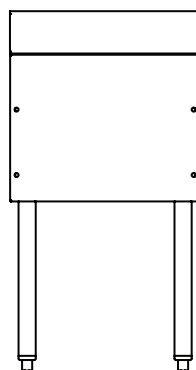
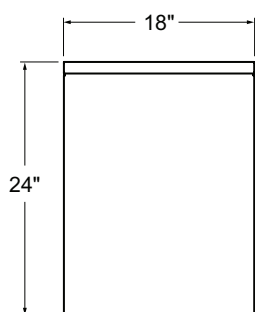
34"

C-FBA-24



#### "B" Depth-24" Deep Models

C-FBB-18



C-FBB-24

