

ECONOMY SILVER SOAK SINKS



Fabricated Bowls
are Welded Together
at the Seams

Item #: _____ Qty #: _____

Model #: _____

Project #: _____

SILVER SOAK SINK



9-FSS-20-EC-X (8" deep)

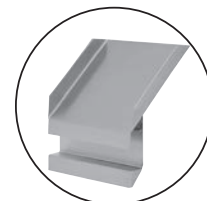
UNIVERSAL BOWL SIZE.
ACCOMMODATES 20" X 20"
DISHWASHER RACKS

SILVER SOAK SINK WITH DETACHABLE CHUTE



9-FSC-20-EC-X (8" deep)

**Required for the scullery
operation that promotes
clean sanitary flatware.**



9-FSC-20-EC-X
Detachable
Chute

FEATURES:

Accommodates 20" x 20" dishwasher racks.
Fabricated bowl welded at the seams.
Top sink rim is furnished with a 2" x 1" square edge

CONSTRUCTION:

All TIG welded.
Welded areas blended to match adjacent surfaces
and to a satin finish.

MECHANICAL:

Waste drain is 2" I.P.S. Twist handle lever operation.
Tail-piece is chrome plated 4" long.
Casters: 4 swivels - each wheel is 5" x 1", each rated
at 125 lbs. - two casters furnished with brakes.

MATERIAL:

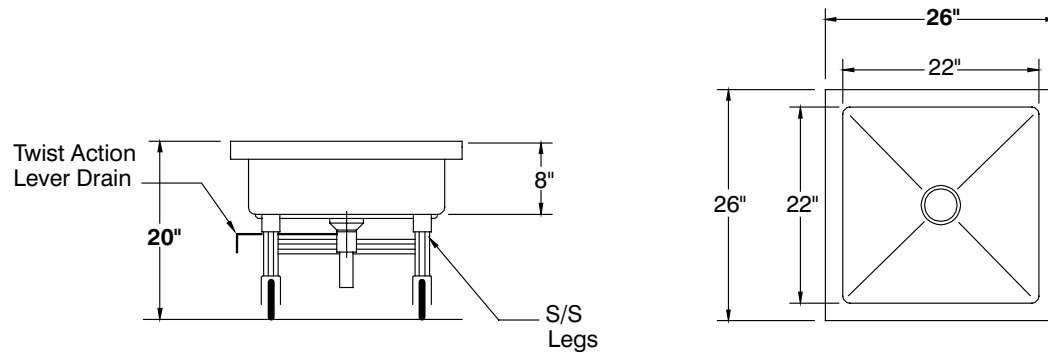
Heavy gauge type "304" stainless steel.
Legs are stainless steel tubing.

DIMENSIONS and SPECIFICATIONS

TOL Overall: $\pm .500"$
Interior: $\pm .250"$

ALL DIMENSIONS ARE TYPICAL

9-FSS-20-EC-X SILVER SOAK SINK



9-FSC-20-EC-X SILVER SOAK SINK WITH DETACHABLE CHUTE

