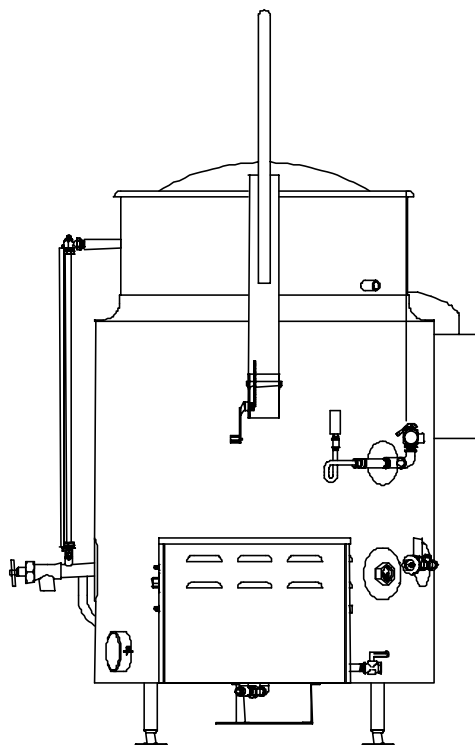


SELF-CONTAINED KETTLE

**GAS-FIRED, INSULATED
DEEP DRAWN CONSTRUCTION
MADE IN USA**

MODEL LTCRG

STANDARD FEATURES



Model LTCRG

- ◆ **The Legion 316 Kettle System**
 - ◇ 316 stainless liner
 - ◇ 316 stainless draw-off tube and welds
 - ◇ 316 stainless 1 1/2" compression draw-off valve
- ◆ 304 stainless kettle jacket
- ◆ Kettle protection system
 - ◇ 30 psi safety valve and maximum operating pressure
 - ◇ Pressure gauge
 - ◇ Jacket-water fill
 - ◇ Thermostat temperature control
 - ◇ Automatic low water cut off
 - ◇ Safety pilot control
- ◆ Full body insulation between kettle jacket and outer casing
- ◆ 304 stainless outer casing seam welded to radius lip
- ◆ 304 stainless, seam welded control console
- ◆ 304 stainless, one piece, domed cover
- ◆ Recirculating pump with automatic timer and manual control
- ◆ Graduated, break-resistant coffee level sight glass
- ◆ Gridded riser basket with canvas coffee bag and stainless spreader ring
- ◆ Bag removal hoist
- ◆ Water fill connection
- ◆ Adjustable flanged feet

Legion equipment is built to comply with applicable standards for manufacturers. Approval agencies may include ASME, NSF, UL, ETL, AGA, CSA, CGA, and others. Legion reserves the right of design improvement or modification as warranted.

MODELS AND CAPACITIES			OPTIONAL FEATURES AND ACCESSORIES				
			See price list for supplemental information regarding options				
LTCRG-40	40 gal.	(151 l.)	<input type="checkbox"/> Draw-off drain with 6 foot hose <input type="checkbox"/> Pressure switch <input type="checkbox"/> Elevated draw-off faucet <input type="checkbox"/> Automatic water filling meter <input type="checkbox"/> Water supply plumbing assembly <input type="checkbox"/> Stainless mesh cloth coffee filter in lieu of fabric	PUMP MOTOR OPTIONS			
LTCRG-60	60 gal.	(227 l.)		Voltage	Phase	Amps	H.P.
LTCRG-80	80 gal.	(303 l.)		115	1	5.2	1/3
LTCRG-100	100 gal.	(379 l.)		220	1	3.2	1/3
				230	1	2.6	1/3
Select voltage: <input type="checkbox"/> 120V <input type="checkbox"/> 208V <input type="checkbox"/> 240V Standard - 120V/1Phase			Prison/Security Options:				
			<input type="checkbox"/> Fasteners (<i>screws & nuts</i>)	208	3	1.4	1/3
			<input type="checkbox"/> Nut driver tool	230	3	1.2	1/3
			<input type="checkbox"/> Screw driver tool	460	3	.6	1/3
			<input type="checkbox"/> Draw-off nut driver tool				
			<input type="checkbox"/> Lockable lid				
			<input type="checkbox"/> Lockable control cover				
			<input type="checkbox"/> Draw-off protection				
			Revision 999				



LEGION® *The Finest American Quality Since 1897*
 LEGION INDUSTRIES, INC. ♦ 69 MAIN ST. ♦ DALLAS, PA 18612 ♦ (800) 833-9803 ♦ (570) 675-1575 ♦ FAX: (570) 675-7551

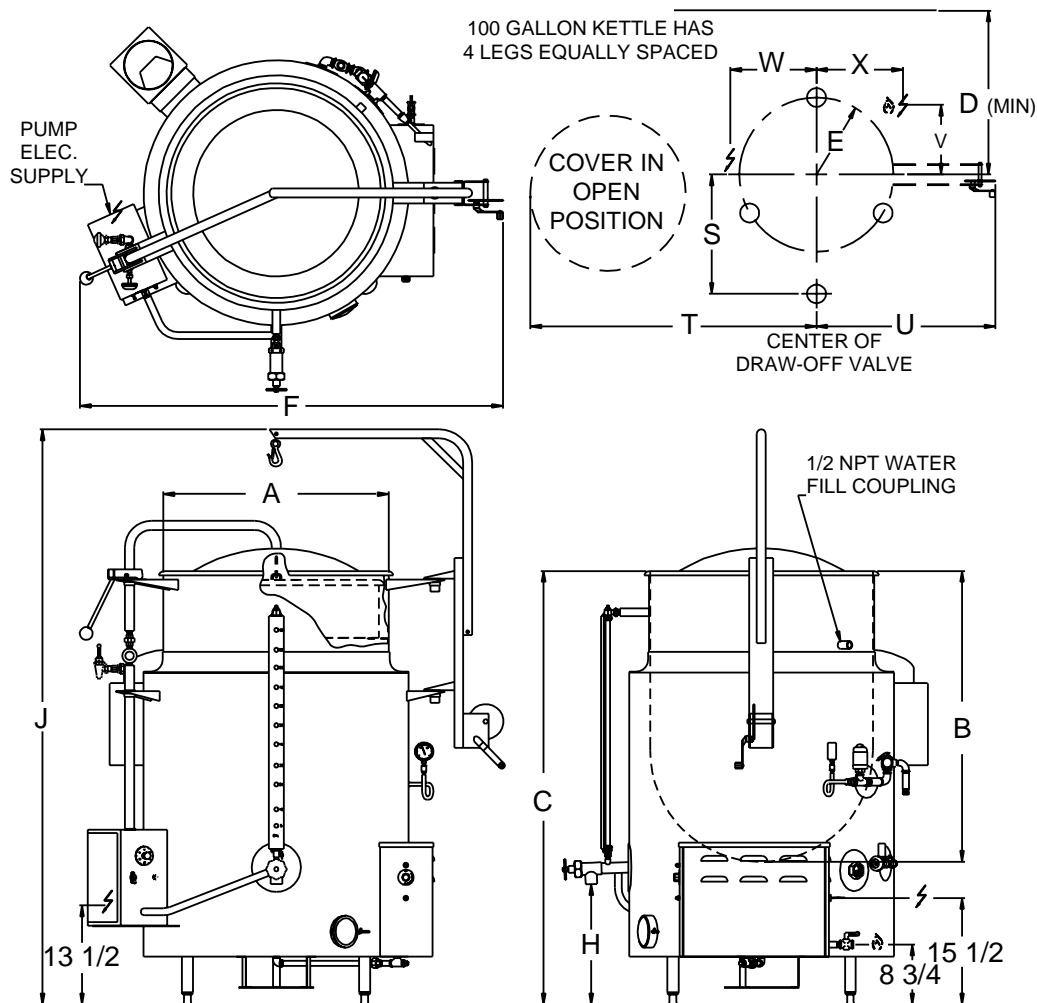
MODEL LTCRG

**GAS-FIRED, INSULATED
DEEP DRAWN CONSTRUCTION
MADE IN USA**

SELF-CONTAINED KETTLE

DRAWING REPRESENTS MODEL LTCRG-100 WITH OPTIONAL ELEVATED SWING FAUCET

COFFEE KETTLE DIMENSIONS				
GAL.	40	60	80	100
A	23.0	25.5	29.5	32.5
B	35.5	40.5	41.5	42.5
C	53.8	59.0	60.8	62.5
D	28.6	31.3	35.3	38.3
E	13.6	14.9	16.8	18.4
F	54.6	58.0	59.0	62.0
H	14.9	15.1	16.1	16.8
J	70.8	76.0	76.8	84.0
S	20.0	21.4	23.4	24.5
T	49.1	52.9	58.9	63.4
U	28.9	30.1	33.6	33.6
V	9.6	9.6	12.0	12.0
W	18.4	19.6	21.6	23.1
X	16.3	17.4	18.4	19.5



COFFEE KETTLE GAS & ELECTRIC SPECIFICATIONS

GAL.	BTU RATING		NATURAL	PROPANE	ELECTRICAL
	NATURAL	PROPANE			
40	120,000	110,000	Piping: 1/2" IPS Supply pressure: 5 - 7" W.C. (nominal) Factory setting: (LTCRG) 3.5" W.C.	Piping: 1/2" IPS Supply pressure: 12 - 14" W.C. (nominal) Factory setting: LTCRG (Continuous pilot) 10" W.C. LTCRG (Electronic ignition) 11.0"W.C.	115 volt 60 cycle 1 phase 1 amp
60	125,000	125,000			
80	125,000	125,000			
100	125,000	125,000			

Revision 999



LEGION The Finest American Quality Since 1897
LEGION INDUSTRIES, INC. ♦ 69 MAIN ST. ♦ DALLAS, PA 18612 ♦ (800) 833-9803 ♦ (570) 675-1575 ♦ FAX: (570) 675-7551