

## Master Series Open Burner Range Attachment

Project \_\_\_\_\_  
Item \_\_\_\_\_  
Quantity \_\_\_\_\_  
CSI Section 11400  
Approved \_\_\_\_\_  
Date \_\_\_\_\_

Master Series Open Burner Range Attachment

### Models

- MST4S
- MST4T
- MST4S-E
- MST4T-E



Model MST4S  
(valve control panel not as depicted)  
17" Range Attachment  
With 2 Open Burners

### Standard Features

- Standard Features:
- Stainless steel front and sides
- Stainless steel door
- 6" (152mm) chrome steel adj. legs
- 7-1/2" (191mm) stainless steel front rail
- Two (2), two -piece Starfire burners with removable heads, rated 30,000 BTU (8.78 kW) CE approved or 35,000 BTU (10.25 Kw) CSA approved models (natural or propane gas)
- Removable ring grate bowl over each burner
- Cast iron top grates
- One piece stainless steel drip tray
- Storage base interior of aluminized steel
- Electric Spark ignition on all pilots
- Suffix -E models
- Sentry total flame failure protection for all burners

### Options & Accessories

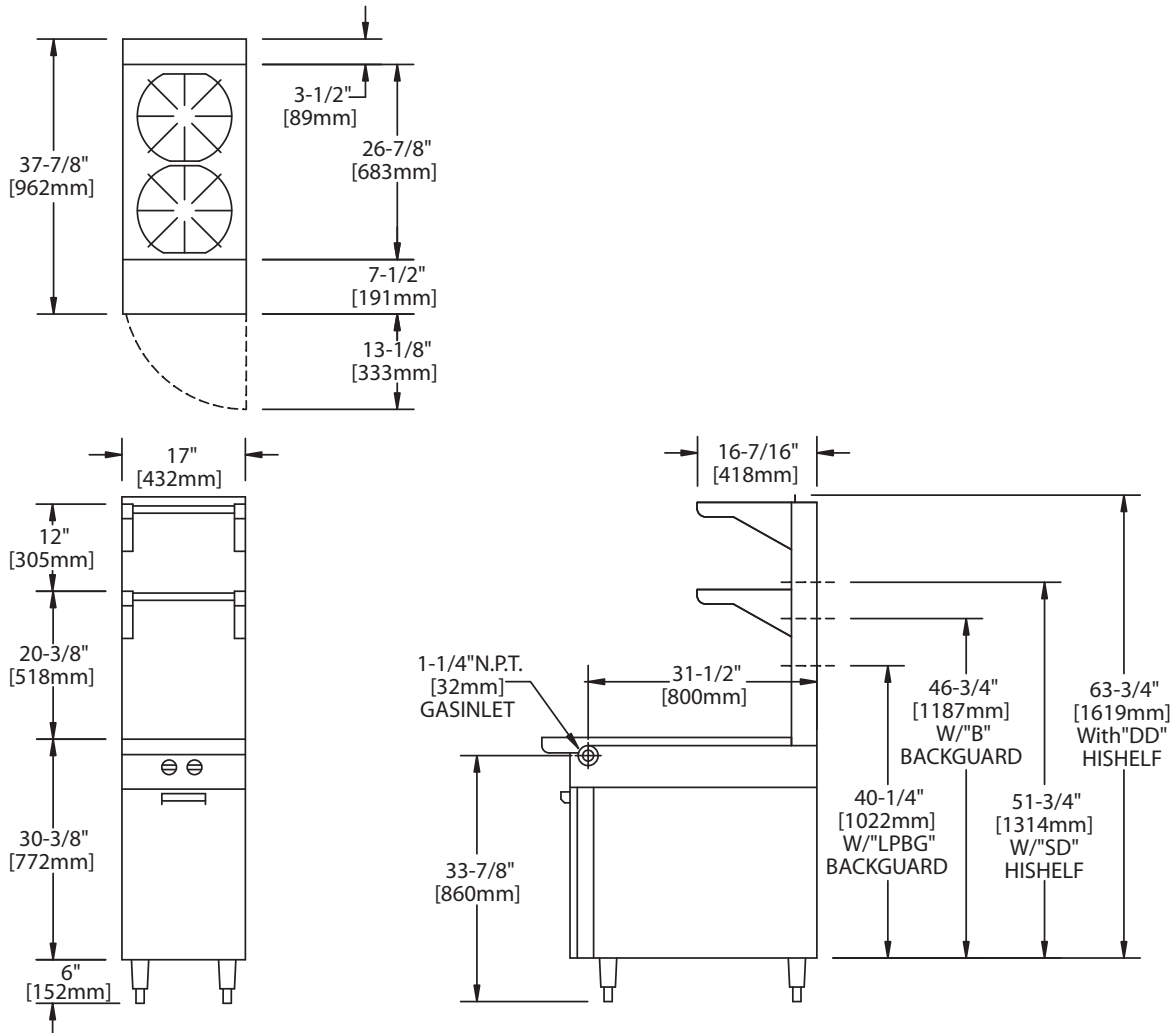
- Stainless steel main back
- Stainless steel common front rail up to 102" (2591mm) wide (two or more units in a battery)
- Gas regulator 3/4" or 1-1/4"
- Gas shut off valve; 3/4", 1" or 1-1/4" NPT
- Gas flex hose & quick disconnect (3/4", 1" or 1-1/4" NPT x 5') w/ restraining device, please specify
- Rear gas connection, 3/4" NPT
- End caps and cover (NC, Specify)
- Polyurethane non-marking swivel casters (4) w/front brakes
- 6" (152mm) stainless steel adj. legs
- Modular stand, (T model)
- Stainless steel tubular high shelf, single or double deck
- Stainless steel backguard: 10" (354mm), 17" (432mm) or 33" (838mm) high
- 230 volt, 50 cycle components electric ignition (export)

### Specifications

Heavy-duty gas range attachment with storage base, Model MST4S. Two (2) 30,000 BTU (8.78 kW) two piece Starfire burners. Sentry total flame failure protection for all burners. Heavy-duty cast iron top grate/ ring grates. 17" (432mm) wide x 38" (965mm) deep, including 7-1/2" (191 mm) deep stainless steel front rail. Stainless steel front and sides. 60,000 BTU (17.57 kW) total. Natural or propane gas. Also available with modular top, suffix T.

NOTE: Ranges supplied with casters must be installed with an approved restraining device.





Product	Width:	Depth:	Height: In(mm)	Height: In(mm)	Storage Base Interior: in(mm)		
	In(mm)	In(mm)	(w/ NSF Legs)	(w/o NSF Legs)	Width	Depth	Height
MST4S	17(432)	38(965)	36-3/8(924)	30-3/8(772)	14(356)	32-1/2(826)	20-1/2(519)
MST4T	17(432)	38(965)	36-3/8(924) w/stand	9-1/2(241) w/o stand*	N/A	N/A	N/A

\*Modular top has 1-1/2" seating flanges.

INPUT-BTU/hr (Natural Gas)	MST4S	MST4T
CE Approved Models 2 Open Burners (30,000 BTU each)	60,000 (17.57kW)	60,000 (17.57kW)
CSA Approved Models 2 Open Burners (35,000 BTU each)	70,000 (20.50 kW)	70,000 (20.50 Kw)

S=Range w/Storage Base T=Modular Top

Installation Notes			Shipping (Lb/Kg) - Cu Ft
Combustible Wall Clearances <sup>1</sup>	Entry Clearances	Operating Pressure	MST4S 200/91 - 26 MST4T 120/55 - 9
Sides: 14" (356mm) Back: 6" (152mm)	Crated: 22 1/4" (565mm) Uncrated: 17-1/4" (438mm)	Natural: 6" WC (15mbar) Propane: 10" WC (25mbar)	

<sup>1</sup>NOTE: Installation clearance reductions are applicable only where local codes permit.

Gas input ratings shown here are for installations up to 2,000 ft. (610m) above sea level. Specify altitudes over 2,000 ft. Please specify gas type when ordering.

Electrical characteristics: **Each RC oven** - 1/3 HP motor, 120 VAC, single phase, 3.4 amps (c/w 6 ft. (1.8m) power cord with NEMA 5-15P plug). 230 VAC export is direct connect, single phase, 50 Hz. **Electrical Spark Ignition** (suffix "E") - 0.1 amps for 115V 60Hz 1 Phase (c/w NEMA 5-15P cord & plug on models with out RC oven) and 0.05 amps for 240C 50Hz 1 phase.

This product is not approved for residential use.

Garland reserves the right to make changes to the design or specifications without prior notice.

Garland Commercial Ranges Ltd.  
1177 Kamato Road,  
Mississauga, Ontario  
L4W 1X4 CANADA

General Inquires 1-905-624-0260  
USA Sales, Parts and Service 1-800-424-2411  
Canadian Sales 1-888-442-7526  
Canada or USA Parts/Service 1-800-427-6668

[www.garland-group.com](http://www.garland-group.com)  
6931A  
03/25

