



LPDS24
with stainless steel door
and top



Intertek

4004503

Conforms to NSF/ANSI STD 2

Project: _____	AIA# _____
Item #: _____ Qty: _____	SIS# _____
Model #: _____	

Low Profile Dry Storage Cabinet

LPDS

LPDS24, LPDS40, LPDS48, LPDS60,
LPDS72, LPDS80, LPDS96

Configurable Options

Door Style & Finish (*specify per door section*):

- Black vinyl-clad
- Stainless steel
- Jeweled stainless
- Laminated
- Unlaminated

Top Style:

- No finished top
- Stainless top

Left and Right Side Finish:

- Black vinyl-clad
- Stainless steel

Door Hinge Location:

- Left or Right

Door Handle:

- Signature
- Pull-tab
- Tube

Standard Features

- Locking door
- Galvanized steel interior
- One adjustable, coated-wire shelf
- Eco-friendly, foamed-in-place insulated sides and door (excluding 24" sides)
- Stainless steel sub top (excluding LPDS24, which has an open top)
- Black vinyl-clad steel exterior front and sides
- LPDS24 includes 16 gauge galvanized shelves

To view underbar installation instructions, please visit: https://www.glastender.com/PDF/F-750-165_Underbar_Installation_Instructions.pdf
 To view cleaning and care instructions, please visit: https://www.glastender.com/PDF/F-423-011_ss_clean_care.pdf

Glastender, Inc. • 5400 N Michigan Rd • Saginaw, MI • 48604-9780
 989.752.4275 • 800.748.0423 • Fax 989.752.4444
www.glastender.com

Specifications subject to change without notice. For current specifications please visit our website.

Approval/Notes:

Low Profile Dry Storage Cabinet

Specifications

		LPDS24	LPDS40	LPDS48	LPDS60	LPDS72	LPDS80	LPDS96
Dimensions	Length	24"	40"	48"	60"	72"	80"	96"
	Number of Sections	1	2	2	3	3	4	4
	Door Opening	21"	16"	20"	16"	20"	16"	20"
Weight Bearing Capacity		Countertops and other accessories should not exceed 500 pounds per door						

Materials

- Stainless steel parts include: exterior sub-top (LPDS24 excluded), interior, front of cabinet, hinges, hinge and lock brackets, and optional legs
- Black vinyl-clad steel parts include: standard sides, doors and compressor cover
- Galvanized steel parts: interior



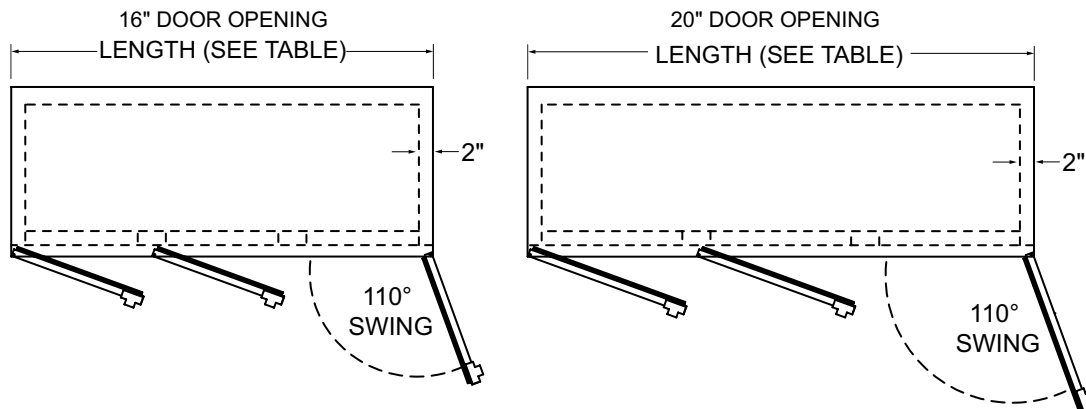
5400 N Michigan Rd • Saginaw, MI • 48604-9780
989.752.4275 • 800.748.0423 • Fax 989.752.4444
www.glastender.com

Printed in USA

Low Profile Dry Storage Cabinet

Drawings

PLAN VIEW

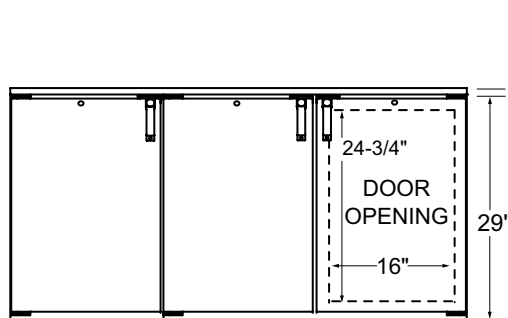


FRONT VIEW

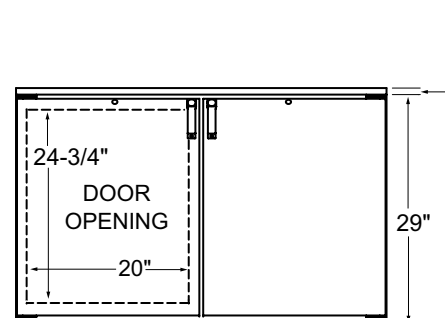
ADD 1" TO HEIGHT FOR FACTORY
INSTALLED TOP



ADD 1" TO HEIGHT FOR
FACTORY INSTALLED TOP

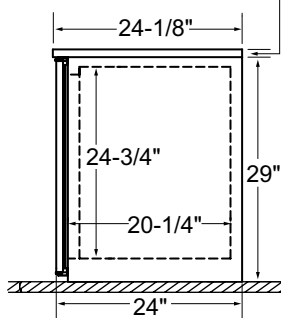


ADD 1" TO HEIGHT FOR
FACTORY INSTALLED TOP



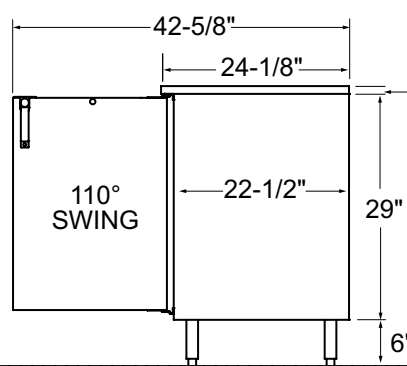
SIDE VIEWS

ADD 1" TO HEIGHT
FOR FACTORY
INSTALLED TOP

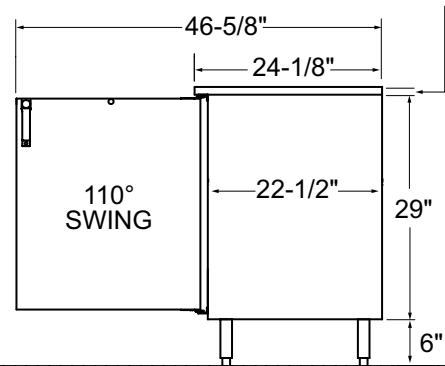


STANDARD CABINET

ADD 1" TO HEIGHT FOR
FACTORY INSTALLED TOP



ADD 1" TO HEIGHT FOR
FACTORY INSTALLED TOP



SHOWN WITH OPTIONAL 6" LEGS

OPTIONAL LEGS AND CASTERS



5400 N Michigan Rd • Saginaw, MI • 48604-9780
989.752.4275 • 800.748.0423 • Fax 989.752.4444
www.glastender.com

Printed in USA