



STAINLESS STEEL

# 14 & 16 GAUGE MULTI-STATION SINKS WITH TUBULAR LEGS & CROSS BRACING **ELECTRONIC OPERATED**



FC-FM-40EF Shown



FC-FM-60EF Shown



FC-FM-120-EFADA Shown

Item #: \_\_\_\_\_ Qty #: \_\_\_\_\_  
Model #: \_\_\_\_\_  
Project #: \_\_\_\_\_



Includes  
K-175 Hands-Free Faucet

## FEATURES:

8 1/2" high backsplash.

**Standard Series:** 8" sink bowl depth.

**A.D.A. Series:** 5" sink bowl depth.

Stainless steel "Z" brackets.

3 1/2" **K-6** rear basket drains.

Tubular stainless steel legs with flanged feet.

**Electronic Operated:** Includes **K-175** Electronic Faucets.

## CONSTRUCTION:

All TIG welded.

Welded areas blended to match adjacent surfaces and to a satin finish.

## MATERIAL:

All 14 or 16 gauge type "304" stainless steel.

1 5/8" tubular "304" stainless steel supports.

## MECHANICAL:

Single faucet hole punch at each station.

### STANDARD - 8" BOWL DEPTH

# Of Stations	16 Gauge Sinks	14 Gauge Sinks	# Of Spouts
2	FC-FM-40EF	FS-FM-40EF	2 Spouts
2	FC-FM-48EF	FS-FM-48EF	2 Spouts
3	FC-FM-60EF	FS-FM-60EF	3 Spouts
3	FC-FM-72EF	FS-FM-72EF	3 Spouts
4	FC-FM-80EF	FS-FM-80EF	4 Spouts
4	FC-FM-96EF	FS-FM-96EF	4 Spouts
5	FC-FM-100EF	FS-FM-100EF	5 Spouts
6	FC-FM-120EF	FS-FM-120EF	6 Spouts



### A.D.A. COMPLIANT - 5" BOWL DEPTH



# Of Stations	16 Gauge Sinks	14 Gauge Sinks	# Of Spouts
2	FC-FM-40-EFADA	FS-FM-40-EFADA	2 Spouts
2	FC-FM-48-EFADA	FS-FM-48-EFADA	2 Spouts
3	FC-FM-60-EFADA	FS-FM-60-EFADA	3 Spouts
3	FC-FM-72-EFADA	FS-FM-72-EFADA	3 Spouts
4	FC-FM-80-EFADA	FS-FM-80-EFADA	4 Spouts
4	FC-FM-96-EFADA	FS-FM-96-EFADA	4 Spouts
5	FC-FM-100-EFADA	FS-FM-100-EFADA	5 Spouts
6	FC-FM-120-EFADA	FS-FM-120-EFADA	6 Spouts

**WARNING:** Equipment that include faucets on this page may contain a chemical known to the State of California to cause cancer, birth defects or other reproductive harm.



**Customer Service Available To Assist You 1-800-645-3166 8:30 am - 7:00 pm E.S.T.**

For Orders & Customer Service:

Email: [customer@advancetabco.com](mailto:customer@advancetabco.com) or Fax: 631-242-6900

For Smart Fabrication™ Quotes:

Email: [smartfab@advancetabco.com](mailto:smartfab@advancetabco.com) or Fax: 631-586-2933

REF-JJ

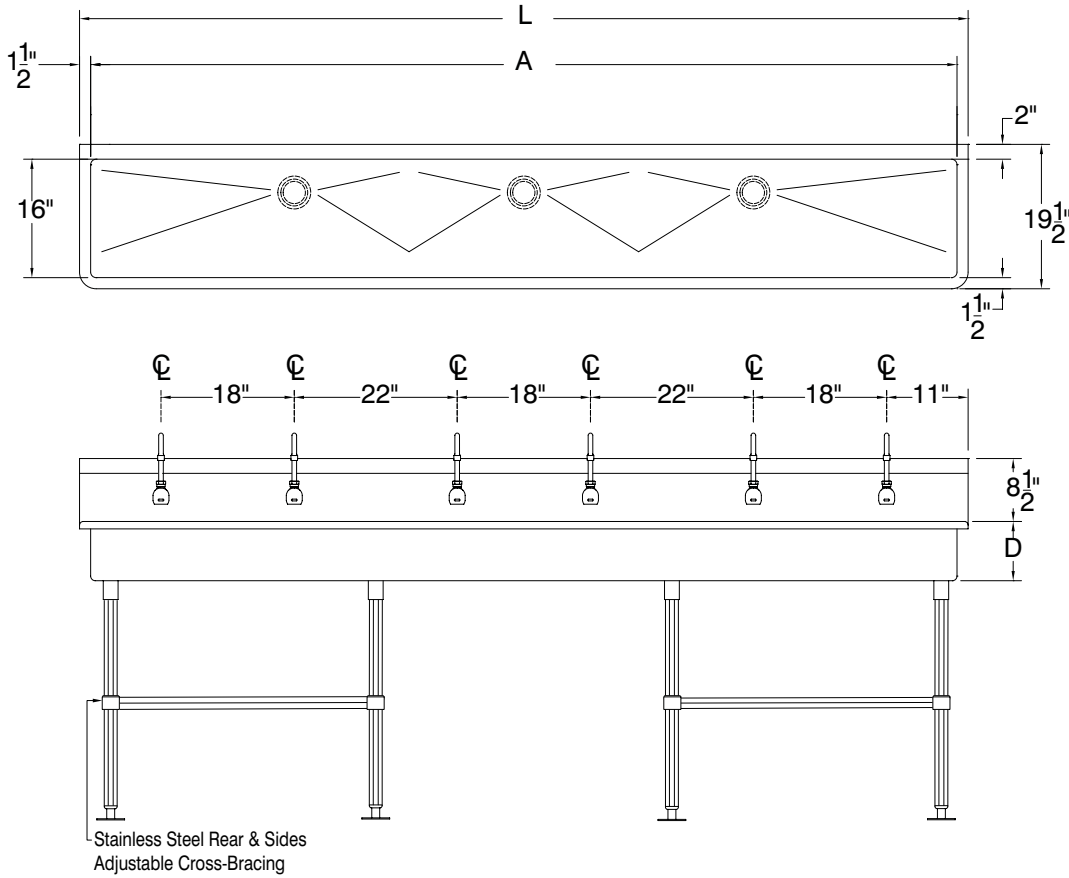
# DETAILS and SPECIFICATIONS

TOL ± .500"

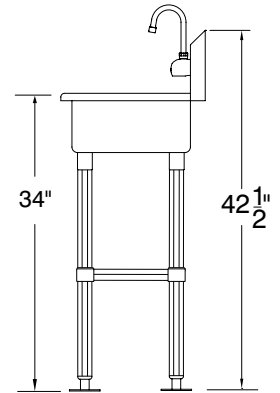
FITTINGS SUPPLIED AS SHOWN

ALL DIMENSIONS ARE TYPICAL

## STAINLESS STEEL MULTI-STATION SINKS WITH TUBULAR LEGS & CROSS BRACING ELECTRONIC OPERATED



SEE PAGE 3  
FOR  
PLUMBING  
ROUGH-INS



# Of Stations	L	16 Gauge Sinks	Wt.	14 Gauge Sinks	Wt.	A	# Of Drains	# Of Faucets	Cu.
STANDARD - 8" DEPTH									
2	40"	FC-FM-40EF	65	FS-FM-40EF	68	37"	1	2	15
2	48"	FC-FM-48EF	75	FS-FM-48EF	78	45"	1	2	16
3	60"	FC-FM-60EF	84	FS-FM-60EF	87	57"	1	3	22
3	72"	FC-FM-72EF	110	FS-FM-72EF	113	69"	1	3	23
4	80"	FC-FM-80EF	120	FS-FM-80EF	123	77"	1	4	28
4	96"	FC-FM-96EF	130	FS-FM-96EF	133	93"	1	4	30
5	100"	FC-FM-100EF	125	FS-FM-100EF	128	97"	2	5	35
6	120"	FC-FM-120EF	150	FS-FM-120EF	153	117"	3	6	42
A.D.A. COMPLIANT- 5" DEPTH									
2	40"	FC-FM-40-EFADA	62	FS-FM-40-EFADA	65	37"	1	2	15
2	48"	FC-FM-48-EFADA	72	FS-FM-48-EFADA	75	45"	1	2	16
3	60"	FC-FM-60-EFADA	81	FS-FM-60-EFADA	84	57"	1	3	22
3	72"	FC-FM-72-EFADA	100	FS-FM-72-EFADA	103	69"	1	3	23
4	80"	FC-FM-80-EFADA	100	FS-FM-80-EFADA	103	77"	1	4	28
4	80"	FC-FM-96-EFADA	110	FS-FM-96-EFADA	113	93"	1	4	30
5	100"	FC-FM-100-EFADA	121	FS-FM-100-EFADA	124	97"	2	5	35
6	120"	FC-FM-120-EFADA	146	FS-FM-120-EFADA	149	117"	3	6	42



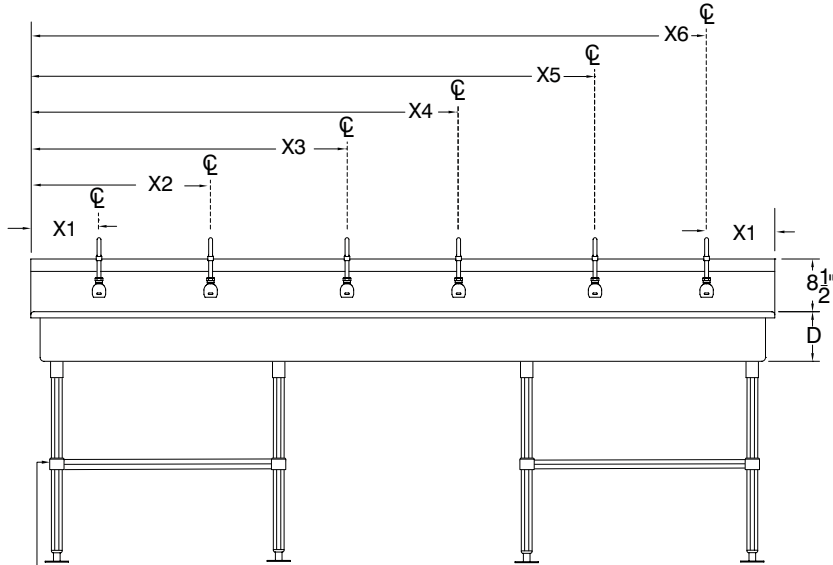
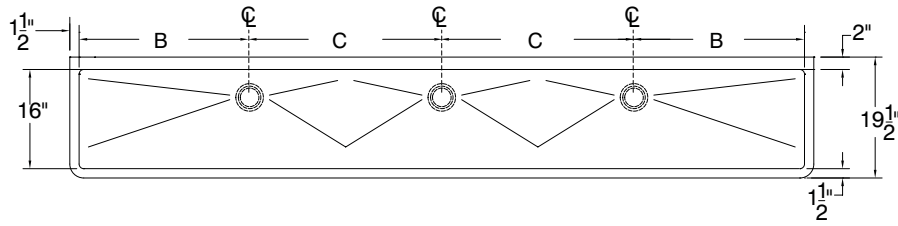
# PLUMBING ROUGH-INS

TOL ± .500"

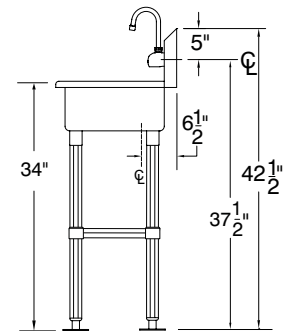
FITTINGS SUPPLIED AS SHOWN

ALL DIMENSIONS ARE TYPICAL

## STAINLESS STEEL MULTI-STATION SINKS WITH TUBULAR LEGS & CROSS BRACING ELECTRONIC OPERATED



Stainless Steel Rear & Sides  
Adjustable Cross-Bracing



# Of Stations	L	16 Gauge Sinks	14 Gauge Sinks	B	C	D	E	F	X1	X2	X3	X4	X5	X6
STANDARD - 8" DEPTH														
2	40"	FC-FM-40EF	FS-FM-40EF	18 1/2"	N/A	8"	11"	18"	N/A	N/A	N/A	N/A	N/A	N/A
2	48"	FC-FM-48EF	FS-FM-48EF	22 1/2"	N/A	8"	15"	33"	N/A	N/A	N/A	N/A	N/A	N/A
3	60"	FC-FM-60EF	FS-FM-60EF	28 1/2"	N/A	8"	11"	19"	19"	N/A	N/A	N/A	N/A	N/A
3	72"	FC-FM-72EF	FS-FM-72EF	34 1/2"	N/A	8"	17"	36"	55"	N/A	N/A	N/A	N/A	N/A
4	80"	FC-FM-80EF	FS-FM-80EF	38 1/2"	N/A	8"	11"	18"	22"	18"	N/A	N/A	N/A	N/A
4	96"	FC-FM-96EF	FS-FM-96EF	24 1/2"	44	8"	15"	37"	59"	81"	N/A	N/A	N/A	N/A
5	100"	FC-FM-100EF	FS-FM-100EF	27 1/2"	42"	8"	11"	19.5"	19.5"	19.5"	19.5"	19.5"	19.5"	19.5"
6	120"	FC-FM-120EF	FS-FM-120EF	27 1/2"	31"	8"	7"	25"	47"	65"	87"	105"	87"	105"
A.D.A. COMPLIANT- 5" DEPTH														
2	40"	FC-FM-40-EFADA	FS-FM-40-EFADA	18 1/2"	N/A	5"	11"	18"	N/A	N/A	N/A	N/A	N/A	N/A
2	48"	FC-FM-48-EFADA	FS-FM-48-EFADA	22 1/2"	N/A	5"	15"	33"	N/A	N/A	N/A	N/A	N/A	N/A
3	60"	FC-FM-60-EFADA	FS-FM-60-EFADA	28 1/2"	N/A	5"	11"	19"	19"	N/A	N/A	N/A	N/A	N/A
3	72"	FC-FM-72-EFADA	FS-FM-72-EFADA	34 1/2"	N/A	5"	17"	36"	55"	N/A	N/A	N/A	N/A	N/A
4	80"	FC-FM-80-EFADA	FS-FM-80-EFADA	38 1/2"	N/A	5"	11"	18"	22"	18"	N/A	N/A	N/A	N/A
4	80"	FC-FM-96-EFADA	FS-FM-96-EFADA	24 1/2"	N/A	5"	15"	37"	59"	81"	N/A	N/A	N/A	N/A
5	100"	FC-FM-100-EFADA	FS-FM-100-EFADA	27 1/2"	42"	5"	11"	19.5"	19.5"	19.5"	19.5"	19.5"	19.5"	19.5"
6	120"	FC-FM-120-EFADA	FS-FM-120-EFADA	27 1/2"	31"	5"	7"	25"	47"	65"	87"	105"	87"	105"



REF-JJ

325 Wireless Boulevard, Hauppauge, NY 11788

ADVANCE TABCO is constantly engaged in a program of improving our products. Therefore, we reserve the right to change specifications without prior notice.

© ADVANCE TABCO, FEBRUARY 2025



STAINLESS STEEL

# 14 & 16 GAUGE MULTI-STATION SINKS WITH TUBULAR LEGS & CROSS BRACING **KNEE OPERATED**



FC-FM-40KV Shown



FC-FM-60KV Shown



FC-FM-120KV Shown

Item #: \_\_\_\_\_ Qty #: \_\_\_\_\_  
Model #: \_\_\_\_\_  
Project #: \_\_\_\_\_



Knee Valves  
Included

## FEATURES:

8 1/2" high backsplash.

8" sink bowl depth.

Stainless steel "Z" brackets.

3 1/2" **K-6** rear basket drains.

Tubular stainless steel legs with flanged feet.

**Knee Operated:** Includes **7-PS-32** knee valves and **K-121** spouts.

## CONSTRUCTION:

All TIG welded.

Welded areas blended to match adjacent surfaces and to a satin finish.

## MATERIAL:

All 14 or 16 gauge type "304" stainless steel.

1 5/8" tubular "304" stainless steel supports.

## MECHANICAL:

Single faucet hole punch at each station.

## STANDARD - 8" BOWL DEPTH

# Of Stations	16 Gauge Sinks	14 Gauge Sinks	# of Spouts	# of Valves
2	FC-FM-40KV	FS-FM-40KV	2 Spouts	2 Valves
2	FC-FM-48KV	FS-FM-48KV	2 Spouts	2 Valves
3	FC-FM-60KV	FS-FM-60KV	3 Spouts	3 Valves
3	FC-FM-72KV	FS-FM-72KV	3 Spouts	3 Valves
4	FC-FM-80KV	FS-FM-80KV	4 Spouts	4 Valves
4	FC-FM-96KV	FS-FM-96KV	4 Spouts	4 Valves
5	FC-FM-100KV	FS-FM-100KV	5 Spouts	5 Valves
6	FC-FM-120KV	FS-FM-120KV	6 Spouts	6 Valves

**WARNING:** Equipment that include faucets on this page may contain a chemical known to the State of California to cause cancer, birth defects or other reproductive harm.



Customer Service Available To Assist You **1-800-645-3166** 8:30 am - 7:00 pm E.S.T.

For Orders & Customer Service:

Email: [customer@advancetabco.com](mailto:customer@advancetabco.com) or Fax: 631-242-6900

For Smart Fabrication™ Quotes:

Email: [smartfab@advancetabco.com](mailto:smartfab@advancetabco.com) or Fax: 631-586-2933

REF-JJ

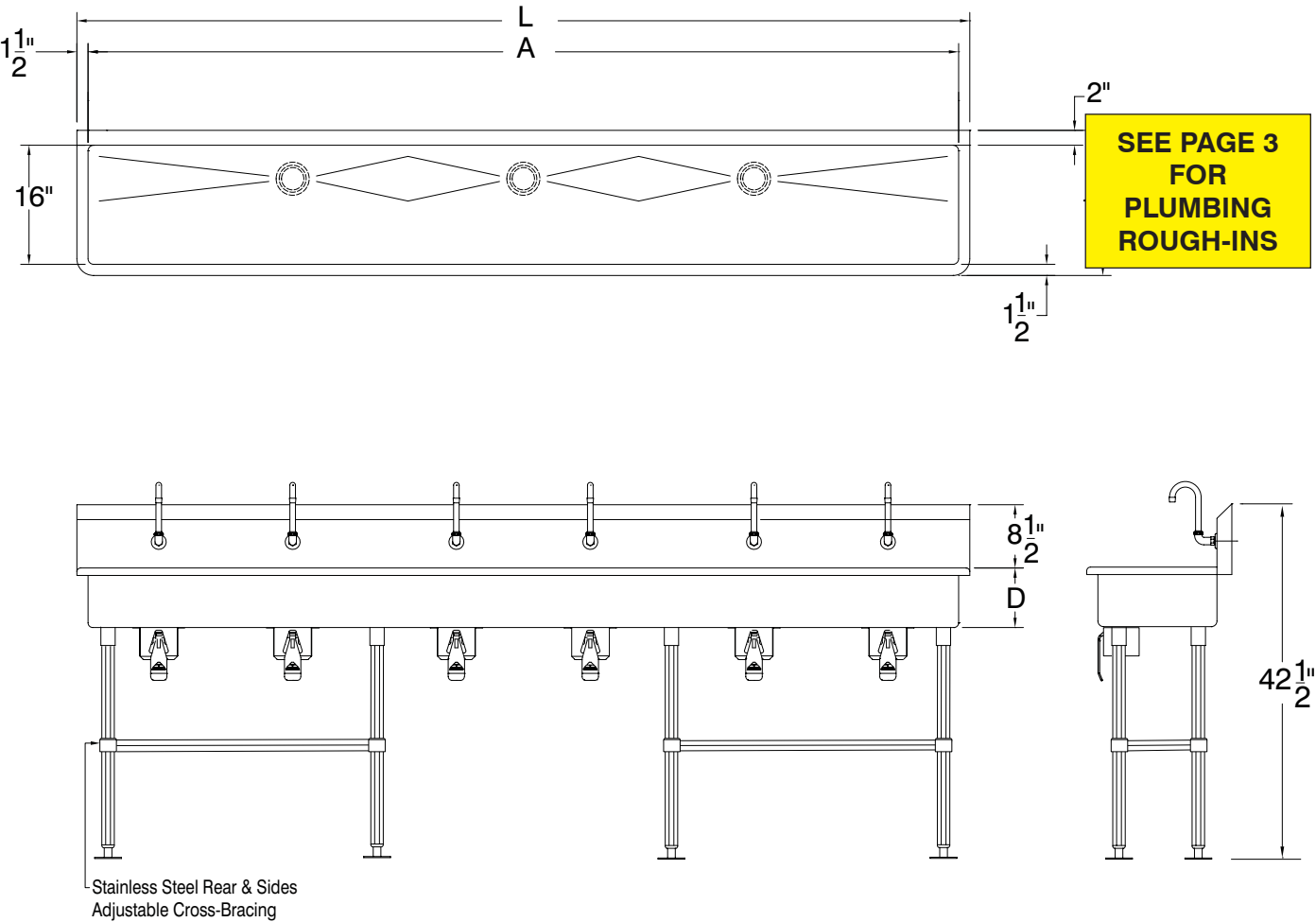
# DETAILS and SPECIFICATIONS

TOL ± .500"

FITTINGS SUPPLIED AS SHOWN

ALL DIMENSIONS ARE TYPICAL

## STAINLESS STEEL MULTI-STATION SINKS WITH TUBULAR LEGS & CROSS BRACING KNEE OPERATED



# Of Stations	L	16 Gauge Sinks	Wt.	16 Gauge Sinks	Wt.	A	# Of Drains	# Of Faucets	Cu.
STANDARD - 8" DEPTH									
2	40"	FC-FM-40KV	82	FS-FM-40KV	96	37"	1	2	15
2	48"	FC-FM-48KV	92	FS-FM-48KV	102	45"	1	2	16
3	60"	FC-FM-60KV	105	FS-FM-60KV	125	57"	1	3	22
3	72"	FC-FM-72KV	110	FS-FM-72KV	131	69"	1	3	23
4	80"	FC-FM-80KV	130	FS-FM-80KV	150	77"	1	4	28
4	96"	FC-FM-96KV	145	FS-FM-96KV	175	93"	1	4	30
5	100"	FC-FM-100KV	165	FS-FM-100KV	192	97"	2	5	35
6	120"	FC-FM-120KV	198	FS-FM-120KV	228	117"	3	6	42



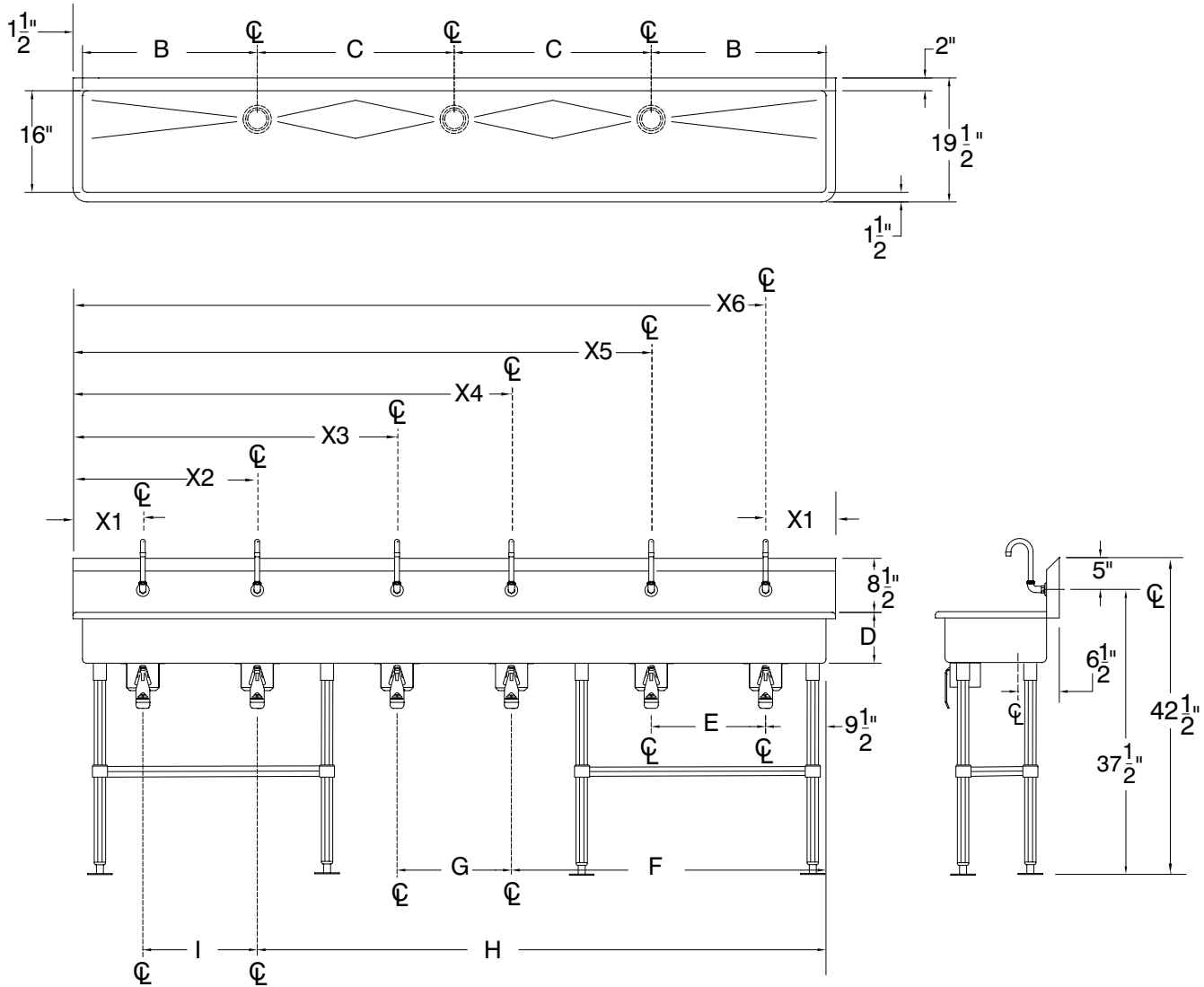
# PLUMBING ROUGH-INS

TOL ± .500"

FITTINGS SUPPLIED AS SHOWN

ALL DIMENSIONS ARE TYPICAL

## STAINLESS STEEL MULTI-STATION SINKS WITH TUBULAR LEGS & CROSS BRACING KNEE OPERATED



# Of Stations	L	Model	B	C	D	E	F	G	H	I	X1	X2	X3	X4	X5	X6
STANDARD - 8" DEPTH																
2	40"	FC-FM-40KV	18 1/2"	N/A	8"	18"	N/A	N/A	N/A	N/A	11"	18"	N/A	N/A	N/A	N/A
2	48"	FC-FM-48KV	22 1/2"	N/A	8"	13 1/2"	31 1/2"	N/A	N/A	N/A	15"	33"	N/A	N/A	N/A	N/A
3	60"	FC-FM-60KV	28 1/2"	N/A	8"	19"	19"	N/A	N/A	N/A	11"	19"	19"	N/A	N/A	N/A
3	72"	FC-FM-72KV	34 1/2"	N/A	8"	15 1/2"	32 1/2"	51 1/2"	N/A	N/A	17"	36"	55"	N/A	N/A	N/A
4	80"	FC-FM-80KV	38 1/2"	N/A	8"	18"	22"	18"	N/A	N/A	11"	18"	22"	18"	N/A	N/A
4	96"	FC-FM-96KV	24 1/32"	N/A	8"	13 1/2"	35 1/2"	57 1/2"	79 1/2"	N/A	15"	37"	59"	81"	N/A	N/A
5	100"	FC-FM-100KV	27 1/2"	42"	8"	19.5"	48.5"	19 1/2"	68"	19.5"	11"	19.5"	19.5"	19.5"	19.5"	19.5"
6	120"	FC-FM-120KV	27 1/2"	31"	8"	18"	49.5"	18"	89.5"	18"	7"	25"	47"	65"	87"	105"



REF-JJ

325 Wireless Boulevard, Hauppauge, NY 11788

ADVANCE TABCO is constantly engaged in a program of improving our products. Therefore, we reserve the right to change specifications without prior notice.

© ADVANCE TABCO, FEBRUARY 2025