



The Signature of Quality®

FEDERAL INDUSTRIES

A Standex Company

215 Federal Avenue
Belleville, Wisconsin 53508-9201

Phone: 800-356-4206

Fax: 608-424-3234

Email: Geninfo@Federalind.com

Website: Federalind.com

Project Name: _____

Item #: _____

Model #: _____ Qty: _____

Approval: _____

AIA #

SIS #

VISION SERIES - Slim-Line Display Case - 78"

Designed to help you make the most of your limited space with a slim 24" depth while delivering a bold, attention-grabbing design that highlights your merchandise.



Model
VRSL7278S
Shown with
Options

OPTIONAL ACCESSORIES

- White interior (including shelves)
- Stainless steel interior (including shelves)
- Stainless steel or glass shelves in lieu of black
- 3500K LED lights below shelves
- Additional lighted 3500K LED shelf
- Field Install - High-capacity condensate evaporator assembly - Separate (1500W 120V, 15 AMP circuit required)
- Self-cleaning condenser
- Stainless steel exterior finish
- Premium exterior laminate
- Graphics package
- Solid end panels (mirrored interior)
- Reflective end glass
- Clear or reflective glass, sliding rear doors (Solid hinged on 36" cases)
- 6" legs (152mm)
- Seismic legs
- Skirt w/4" casters or legs
- 2 1/2" (63.5mm) recessed or 4" (101.6mm) casters (self-contained models only) (Weight limits may apply)
- Joining kit for continuous line-ups (not available with casters)
- Front wire display basket
- Front cart bumper
- Roll-Down locking security cover (black, white, or gray)
- Black polycarbonate removable locking security cover

*Additional options available on the website and price list.

MODEL	DIMENSIONS (Includes End Panels)
<input type="checkbox"/> VRSL3678S	36 x 24 x 78 (in) 914 x 610 x 1981 (mm)
<input type="checkbox"/> VRSL4878S	47.25 x 24 x 78 (in) 1200 x 610 x 1981 (mm)
<input type="checkbox"/> VRSL6078S	59.25 x 24 x 78 (in) 1505 x 610 x 1981 (mm)
<input type="checkbox"/> VRSL7278S	71.25 x 24 x 78 (in) 1810 x 610 x 1981 (mm)

STANDARD FEATURES

Model Features

- Black interior including shelves
- Stainless steel display deck
- Tempered glass ends
- Black powder coated base frame
- Moisture resistant end panel construction
- Choice of standard colors on lower millwork panel
- Black trim
- Adjustable leg levelers
- Cord & 90 degree plug, self-contained only
- Front air intake / front discharge
- Energy saving night curtain

Refrigeration

- R290 refrigerant
- Electronic temperature control maintains 38°-40°F (3.3°-4.4°C) Note: Case temperatures will vary if the air curtain is disrupted.
- Digital thermometer
- Clear coil on demand defrost
- Coated evaporator coil

Shelving

- Four tiers of adjustable black metal shelves with black price tag molding.
- Shelves can be flat or slanted down at 10°.

Lighting

- 3500K LED top light

Agency Approvals

- UL, C-UL and UL Sanitation listed to NSF-7, Type I conditions
- DOE 2017 compliant



WARRANTY*
One year Parts and Labor
2nd thru 5th year part only
service compressor
(U.S.A. and Canada)

Note: Information is subject to change at any time. Visit www.federalind.com for the most current specs.

AIA #	VISION SERIES - Slim-Line Display Case - 78"
SIS #	Product Specifications

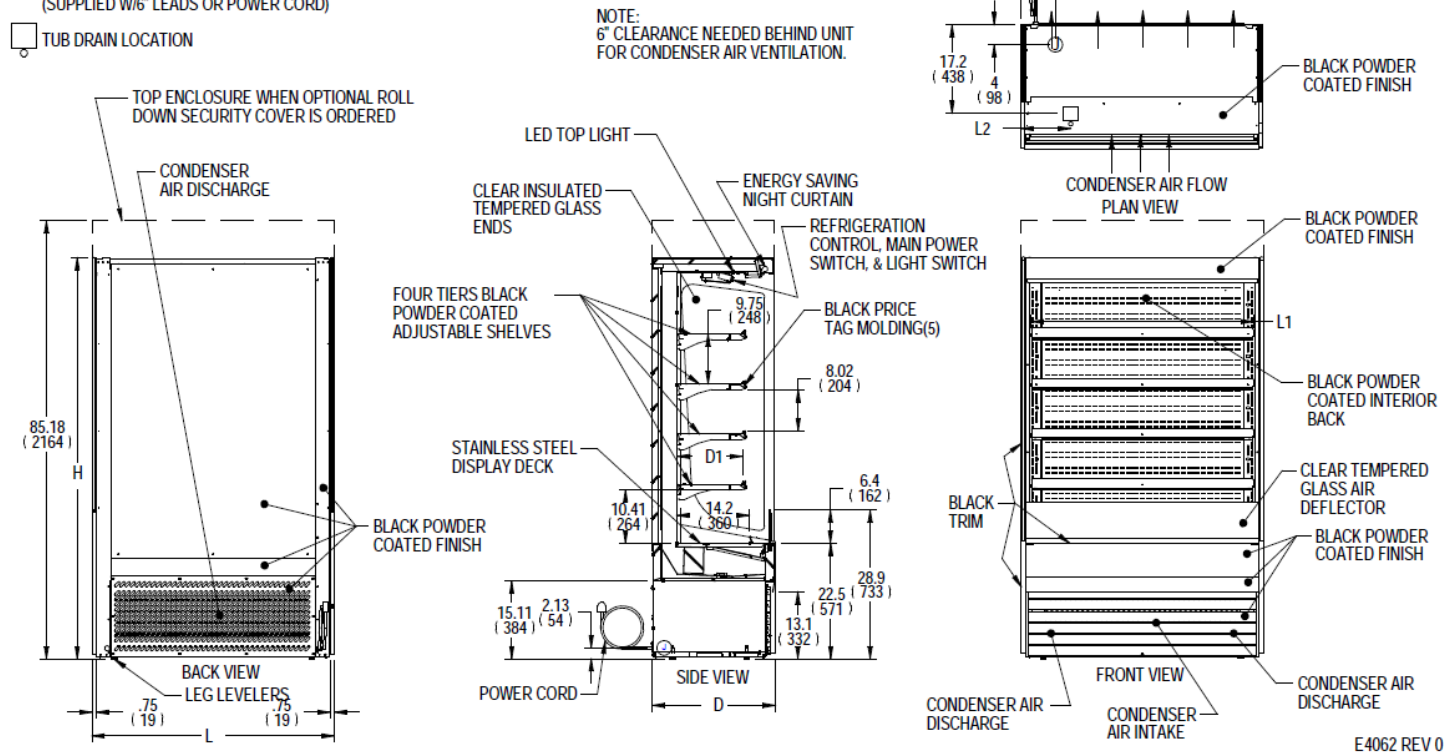
Intended Environment: Type I (Self-Contained) - Designed to operate in maximum ambient conditions of 75°F (24°C) and 55% relative humidity.		
Zone	Intended Product To Be Displayed	Avg Prod Temp °F/°C
All	Packaged Refrigerated Products	38°F / (3.3°C)

DIMENSION: xx"/(mm)
DIMENSION TOLERANCE +/- 0.25
(6.4)

SYMBOL KEY:

Ⓝ ELECTRICAL JUNCTION BOX
(SUPPLIED W/6" LEADS OR POWER CORD)

□ TUB DRAIN LOCATION



MODEL	DIMENSIONS			TUB DRAIN	SHELVING		INTERIOR VOLUME CU FT	SELF CONTAINED				CONDENSATE REMOVAL	SHIP WEIGHT				
	L	D	H	L2	# OF TIERS	L1		D1	ELECTRICAL 2 WIRE + GROUND	STANDARD CONNECTION CORD & PLUG				REFRIGERANT	LBS		
	in	in	in	in		in		in		AMPS	MAX FUSE SIZE					NEMA CORD &	KILO
	mm	mm	mm	mm		mm		mm									
VRSL3678S	36	24	78	6.74	4	32.25	12.6	120/60/1	16	20	NEMA 5-20P	R290	INTEGRATED PAN	500			
	914	610	1981	171		819	320							227			
VRSL4878S	47.25	24	78	13.49	4	43.25	12.6	208-240/60/1	11	15	NEMA 6-15P	R290	INTEGRATED PAN	590			
	1200	610	1981	343		1099	320							268			
VRSL6078S	59.25	24	78	14.12	4	55.25	12.6	208-240/60/1	16	20	NEMA 6-20P	R290	INTEGRATED PAN	750			
	1505	610	1981	359		1403	320							340			
VRSL7278S	71.25	24	78	20.12	4	67.25	12.6	208-240/60/1	16	20	NEMA 6-20P	R290	INTEGRATED PAN	810			
	1810	610	1981	511		1708	320							367			

- Due to continuing engineering improvements, specifications are subject to change without notice
- Case temperature will vary if the air curtain is disrupted.



FEDERAL INDUSTRIES
A Standex Company
215 Federal Avenue Belleville, Wisconsin 53508-9201

Phone: 800-356-4206
Fax: 608-424-3234
Email: Geninfo@Federalind.com
Website: Federalind.com