



PERLICK®



MODEL NUMBERS - TSF12BTB

UNDERBAR BRIDGE TRASH MODULE



TSF12BTB

JOB	
AREA	
ITEM NO.	
MODEL NO.	

MODELS
TSF12BTB

KEY PRODUCT FEATURES AND BENEFITS

- Perlick trash housings are designed to fit the standard slim container up to 30" high
- Unit are designed to attach to adjoining equipment and can have an accessory leg panel on one side
- Designed to integrate into your design and keep a clean aesthetic

ADDITIONAL FEATURES

- Effectively hides trash containers to keep your bar appearance clean
- Stainless steel for corrosion resistance
- Designed for easy cleaning

Form No. Z2984
Rev 08.04.25



PERLICK®



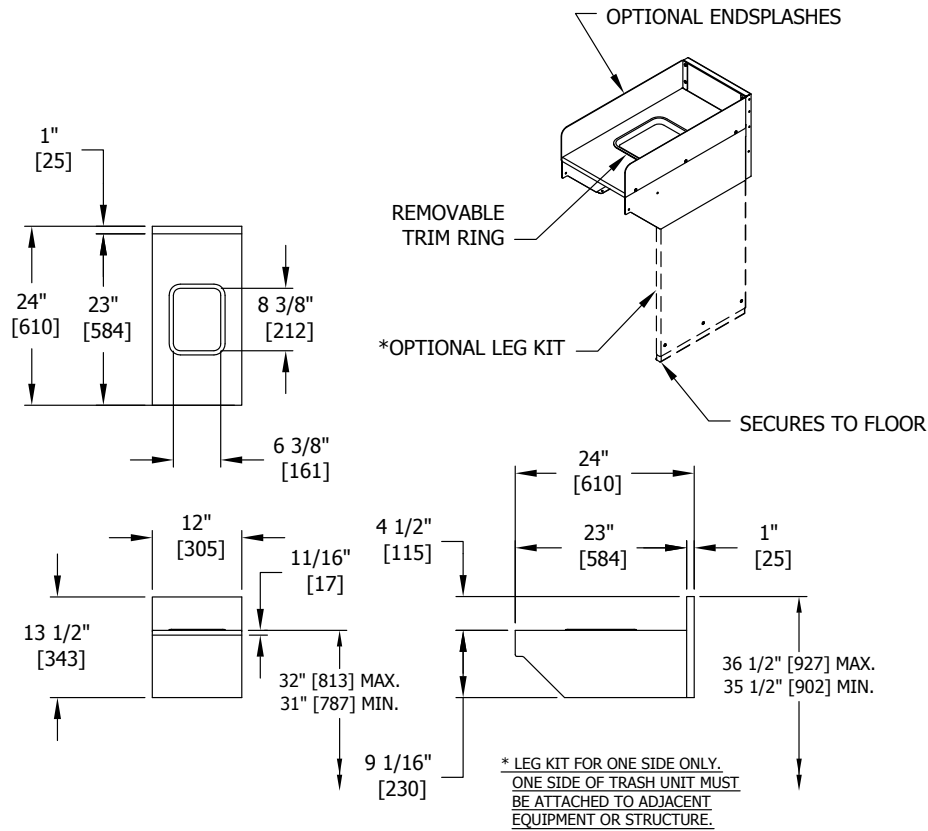
MODEL NUMBERS - TSF12BTB

UNDERBAR BRIDGE TRASH MODULE

MODEL NOS.		TSF12BTB
DIMENSIONS: EXTERIOR (mm)	Width	12" (305)
	Depth	24" (610)
	Ship Weight (lbs)	25 (11)
GENERAL PARTS	General Parts	Stainless steel
	Backsplash	6" high (4" high optional)
ACCESSORIES	TSF12BTB	End panel and pair of legs (BTB-PL), End splash (BTB-ES)
	Wastebasket Accessories	Wastebasket (11" L x 20" W x 30" H - recommend CSF Brands model 34202323) PN: 57265

Note: Requires support by adjacent underbar equipment or accessory end panel and leg kit.

TSF12BTB



Form No. Z2984
Rev 08.04.25