



www.BakeMax.com

Project: _____

Item: _____

Qty: _____ Date: _____

BakeMax BMDN1722R Electric Shawarma Machine

Achieve authentic results with precision grilling and slicing with a BakeMax Shawarma Machine. Designed for Mediterranean restaurants, kebab establishments, and mobile food vendors, our robust and customizable equipment ensures efficient preparation of tender, flavorful shawarma and doner kebabs. Deliver exceptional quality that consistently satisfies your customers.



Features:

- Constructed of Heavy Duty Stainless-Steel
- Hygienic, Safe to use & Easy-to-Clean
- Ensures precise heat distribution for perfect gyros, doner kebab, shawarma, and al pastor.
- 130lbs. Meat Capacity
- Two Individually Controlled Fast-Heating Elements providing a total of 6000W of Power
- Large base provides a strong and reliable support
- Adjustable, Dual Directional Spit
- Sliding bottom housing allows you to move the shawarma meat closer to the element.
- Large Easy-to-Remove Grease / Oil Drip Container for Easy Clean-Up
- Field Convertible to Single Phase
- 2-Year Limited Warranty

Product Specifications:

- Product Dimensions (WDH): 20" x 24" x 46"
- Product Weight: 83 lbs.

Shipping Specifications:

- Crated Dimensions (WDH): 22" x 26" x 48"
- Crated Weight: 97 lbs.

Electrical Specifications:

- 208V / 25A / 6000W / 60Hz / 3Ph / Hard Wired
- 208V / 29A / 6000W / 60Hz / 1Ph / Hard Wired






Intertek

Intertek

BakeMax ® / Titan Ventures International Inc.

Warehouses:

20 Caribou St, Moncton, NB E1H 0P3 
5705 Valley Belt Rd Independence, OH 44131 
1201 E 27th Terrace Pittsburg, KS 66762 

Toll Free: 1-800-565-BAKE (2253)

Phone: 506-858-8990

Fax: 506- 859-6929

Email: Sales@BakeMax.com

*Due to continuous product improvement, specifications are subject to change without notice.



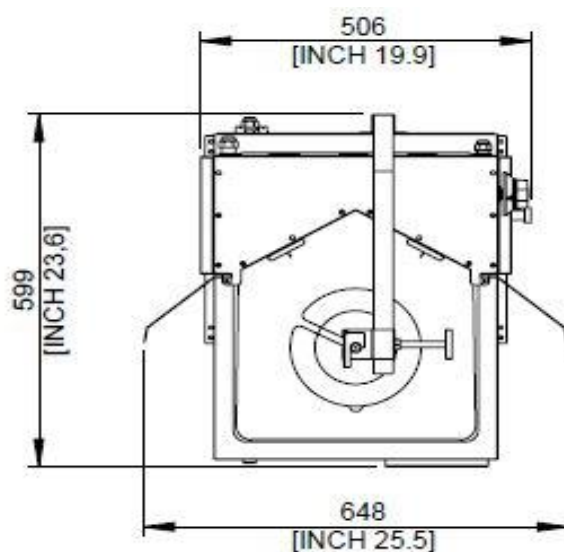
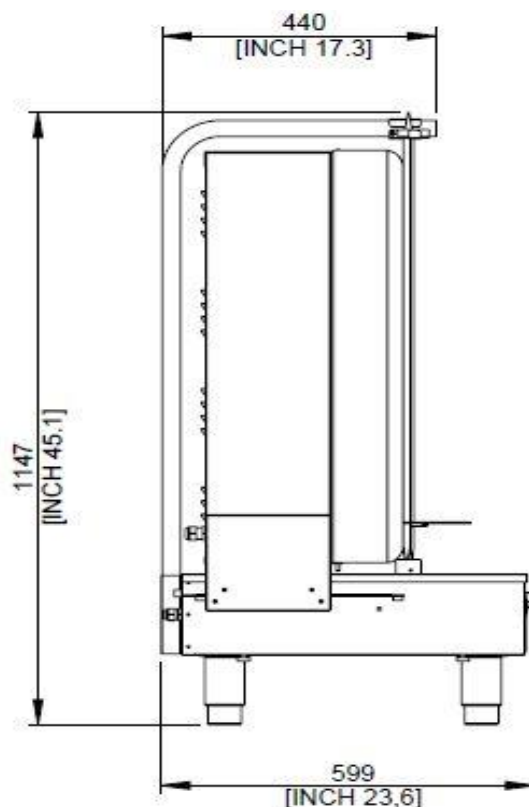
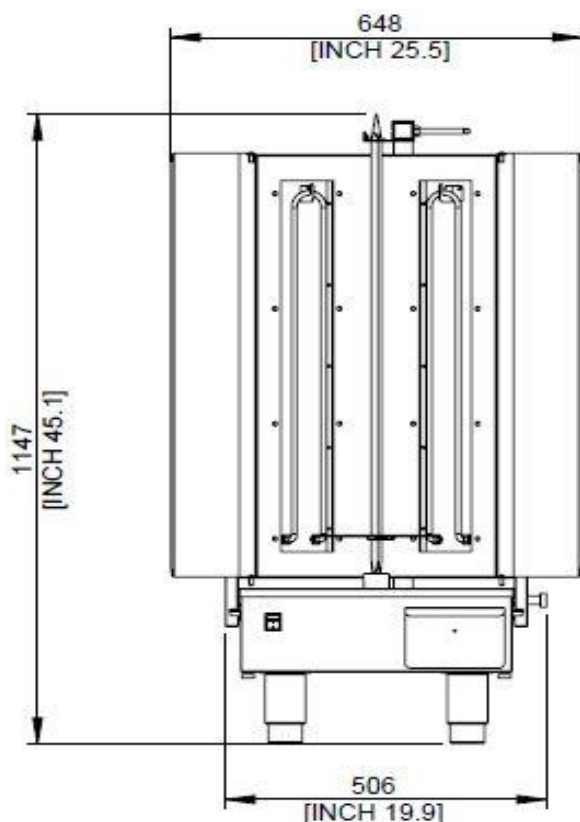
www.BakeMax.com

Project: _____

Item: _____

Qty: _____ Date: _____




BakeMax BMDN1722R Electric Shawarma Machine



REQUIRED CLEARANCES

	NON-COMBUSTIBLE	COMBUSTIBLE
LEFT	0"	12"
RIGHT	0"	12"
BACK	0"	3"

Warehouses:

20 Caribou St, Moncton, NB E1H 0P3 
5705 Valley Belt Rd Independence, OH 44131 
1201 E 27th Terrace Pittsburg, KS 66762 

BakeMax® / Titan Ventures International Inc.

Toll Free: 1-800-565-BAKE (2253)

Phone: 506-858-8990

Fax: 506- 859-6929

Email: Sales@BakeMax.com