



DS24  
with stainless steel door and top



**Intertek**

4004503

Conforms to NSF/ANSI STD 2

Project: _____	AIA# _____
Item #: _____ Qty: _____	SIS# _____
Model #: _____	

## Dry Storage Cabinets

DS24, DS40, DS48, DS60,  
DS72, DS80, DS96

### Configurable Options

#### Door Style & Finish:

- Black vinyl-clad
- Stainless steel
- Jeweled stainless
- Laminated
- Unlaminated

#### Top Style:

- No finished top
- Stainless top

#### Left and Right Side Finish:

- Black vinyl-clad
- Stainless steel

#### Door Hinge Location *(specify for each door):*

- Left or Right

#### Door Handle:

- Signature
- Pull-tab
- Tube

### Standard Features

- Locking door(s)
- Eco-friendly, foamed-in-place insulated sides and door (excluding DS24 sides)
- Stainless steel sub top (excluding DS24, which has an open top)
- Black vinyl-clad steel exterior front and sides
- Two adjustable, coated-wire shelves per door section (DS24 excluded)
- DS24 includes 16 gauge galvanized shelves

To view underbar installation instructions, please visit: [https://www.glastender.com/PDF/F-750-165\\_Underbar\\_Installation\\_Instructions.pdf](https://www.glastender.com/PDF/F-750-165_Underbar_Installation_Instructions.pdf)

To view cleaning and care instructions, please visit: [https://www.glastender.com/PDF/F-423-011\\_ss\\_clean\\_care.pdf](https://www.glastender.com/PDF/F-423-011_ss_clean_care.pdf)

**Glastender, Inc.** • 5400 N Michigan Rd • Saginaw, MI • 48604-9780  
989.752.4275 • 800.748.0423 • Fax 989.752.4444  
[www.glastender.com](http://www.glastender.com)

Approval/Notes:

Specifications subject to change without notice. For current specifications please visit our website.

# Dry Storage Cabinet

## Specifications

		DS24	DS40	DS48	DS60	DS72	DS80	DS96
Dimensions	Length	24"	40"	48"	60"	72"	80"	96"
	Number of Sections	1	2	2	3	3	4	4
	Door Opening	21"	16"	20"	16"	20"	16"	20"
Weight Bearing Capacity		Countertops and other accessories should not exceed 500 pounds per door						

### Materials

- Stainless steel parts include: exterior sub-top (DS24 excluded), interior, front of cabinet, hinges, hinge and lock brackets, and optional legs
- Black vinyl-clad steel parts include: standard sides, doors and compressor cover
- Galvanized steel parts: interior



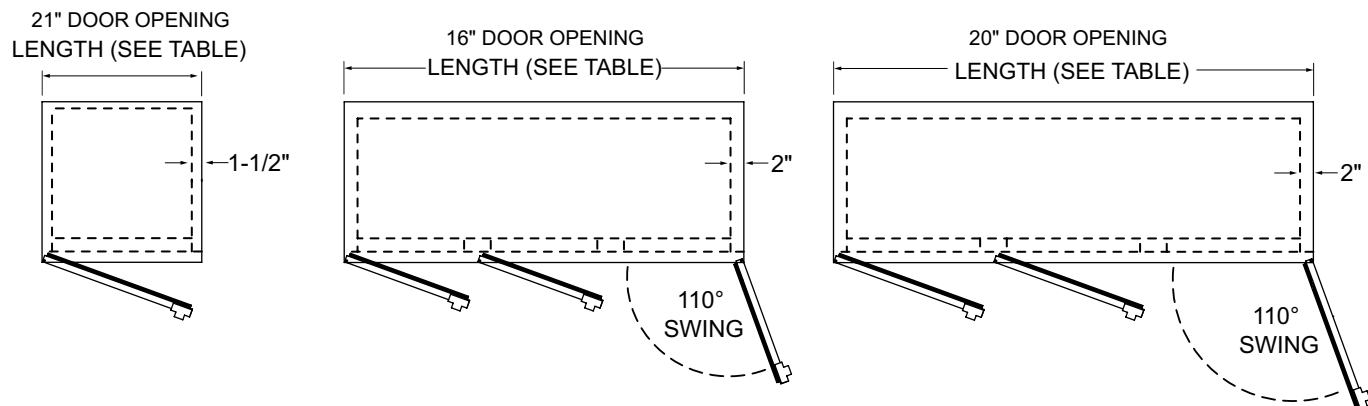
5400 N Michigan Rd • Saginaw, MI • 48604-9780  
989.752.4275 • 800.748.0423 • Fax 989.752.4444  
www.glastender.com

Printed in USA

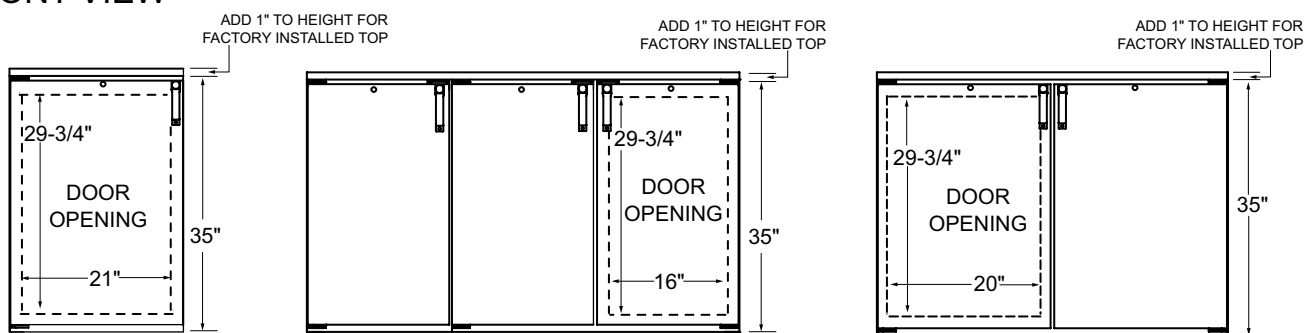
# Dry Storage Cabinets

## Drawings

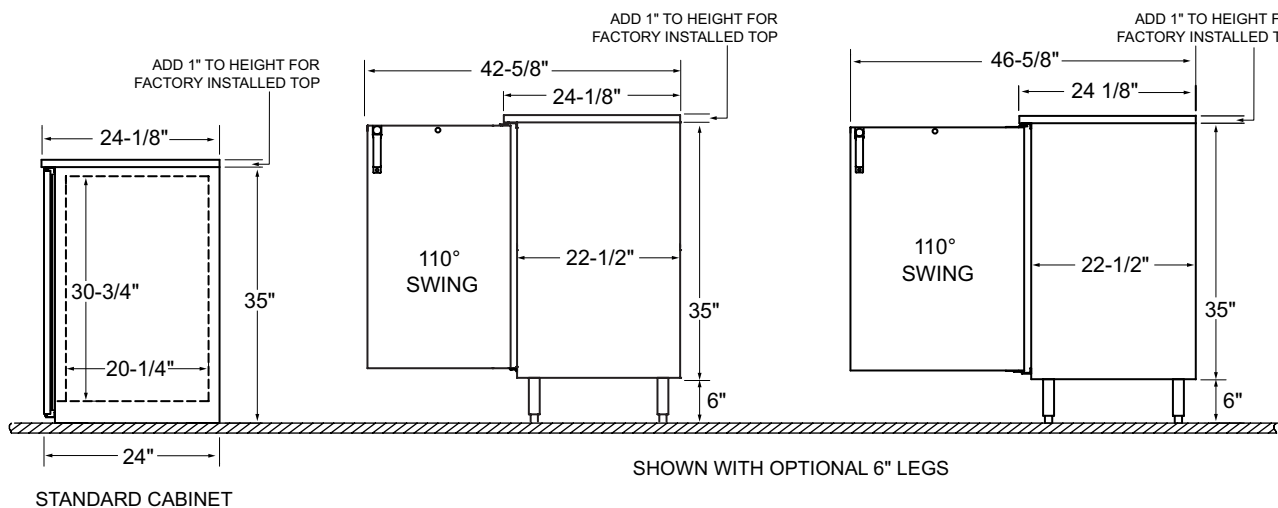
### PLAN VIEW



### FRONT VIEW



### SIDE VIEWS



#### OPTIONAL LEGS AND CASTERS



5400 N Michigan Rd • Saginaw, MI • 48604-9780  
989.752.4275 • 800.748.0423 • Fax 989.752.4444  
www.glastender.com

Printed in USA