



STAINLESS STEEL

MULTI-STATION FLOOR MOUNTED SQUARE CORNER SINKS WITH TUBULAR LEGS & CROSS BRACING

TOE-PUSH OPERATED



19-FM-23FV Shown



19-FM-40FV Shown



19-FM-60FV Shown



19-FM-120FV Shown

Item #: _____ Qty #: _____
 Model #: _____
 Project #: _____



Knee Valves Included

FEATURES:

- 8 1/2" high backsplash.
- Standard Series:** 8" sink bowl depth.
- Stainless steel "Z" brackets.
- 3 1/2" **K-6** rear basket drain(s).
- Tubular stainless steel legs with flanged feet.
- Side & rear adjustable cross-bracing with leg clamps.
- Toe-Push Operated:** Includes **K-104** toe-push valve(s) and **K-121** spout(s).

CONSTRUCTION:

- All TIG welded.
- Welded areas blended to match adjacent surfaces and to a satin finish.

MATERIAL:

- 16 gauge type "304" stainless steel.
- 1 5/8" tubular "304" stainless steel supports.

MECHANICAL:

- Single faucet hole punch at each station.

# Of Stations	16 Gauge Sinks Without Faucets	# Of Faucets	# Of Valves
1	19-FM-23FV	1 Faucet	1 Valve
2	19-FM-40FV	2 Faucets	2 Valves
2	19-FM-48FV	2 Faucets	2 Valves
3	19-FM-60FV	3 Faucets	3 Valves
3	19-FM-72FV	3 Faucets	3 Valves
4	19-FM-80FV	4 Faucets	4 Valves
4	19-FM-96FV	4 Faucets	4 Valves
5	19-FM-100FV	5 Faucets	5 Valves
6	19-FM-120FV	6 Faucets	6 Valves

WARNING: Equipment that include faucets on this page may contain a chemical known to the State of California to cause cancer, birth defects or other reproductive harm.



Customer Service Available To Assist You 1-800-645-3166 8:30 am - 7:00 pm E.S.T.

For Orders & Customer Service:

Email: customer@advancetabco.com or Fax: 631-242-6900

For Smart Fabrication™ Quotes:

Email: smartfab@advancetabco.com or Fax: 631-586-2933

REF-JJ

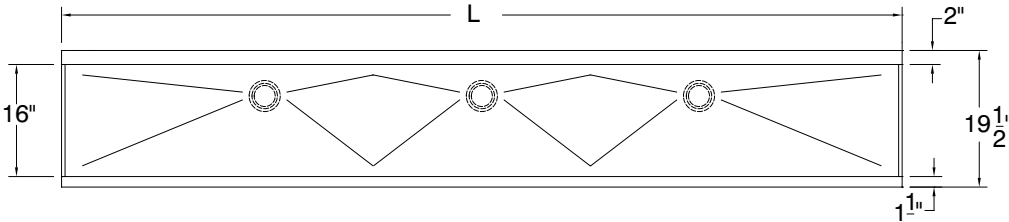
DETAILS and SPECIFICATIONS

TOL ± .500"

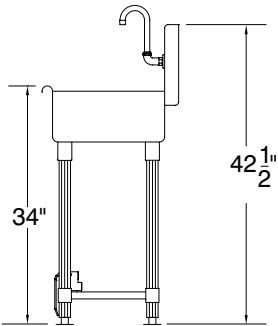
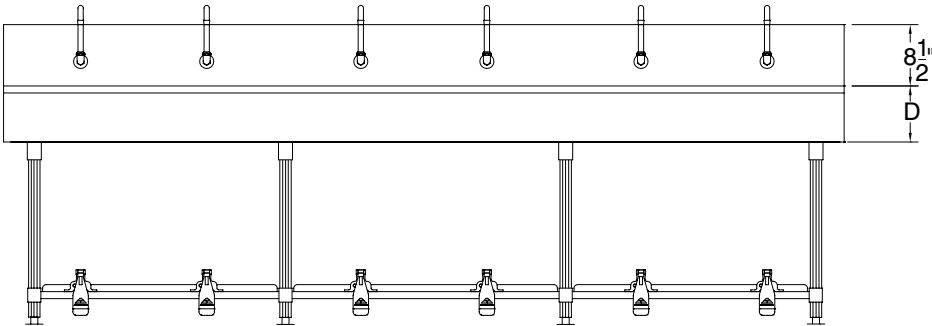
FITTINGS SUPPLIED AS SHOWN

ALL DIMENSIONS ARE TYPICAL

MULTI-STATION FLOOR MOUNTED SQUARE CORNER SINKS WITH TUBULAR LEGS & CROSS BRACING **TOE-PUSH OPERATED**



SEE PAGE 3
FOR
PLUMBING
ROUGH-INS



# Of Stations	L	16 Gauge Sinks Without Faucets	Wt.	# Of Drains	# Of Faucets	Cu.
STANDARD - 8" DEPTH						
1	40"	19-FM-23FV	58	1	2	15
2	40"	19-FM-40FV	70	1	2	15
2	48"	19-FM-48FV	83	1	2	16
3	60"	19-FM-60FV	138	1	3	22
3	72"	19-FM-72FV	153	1	3	23
4	80"	19-FM-80FV	163	1	4	28
4	96"	19-FM-96FV	193	1	4	30
5	100"	19-FM-100FV	243	2	5	35
6	120"	19-FM-120FV	258	3	6	42



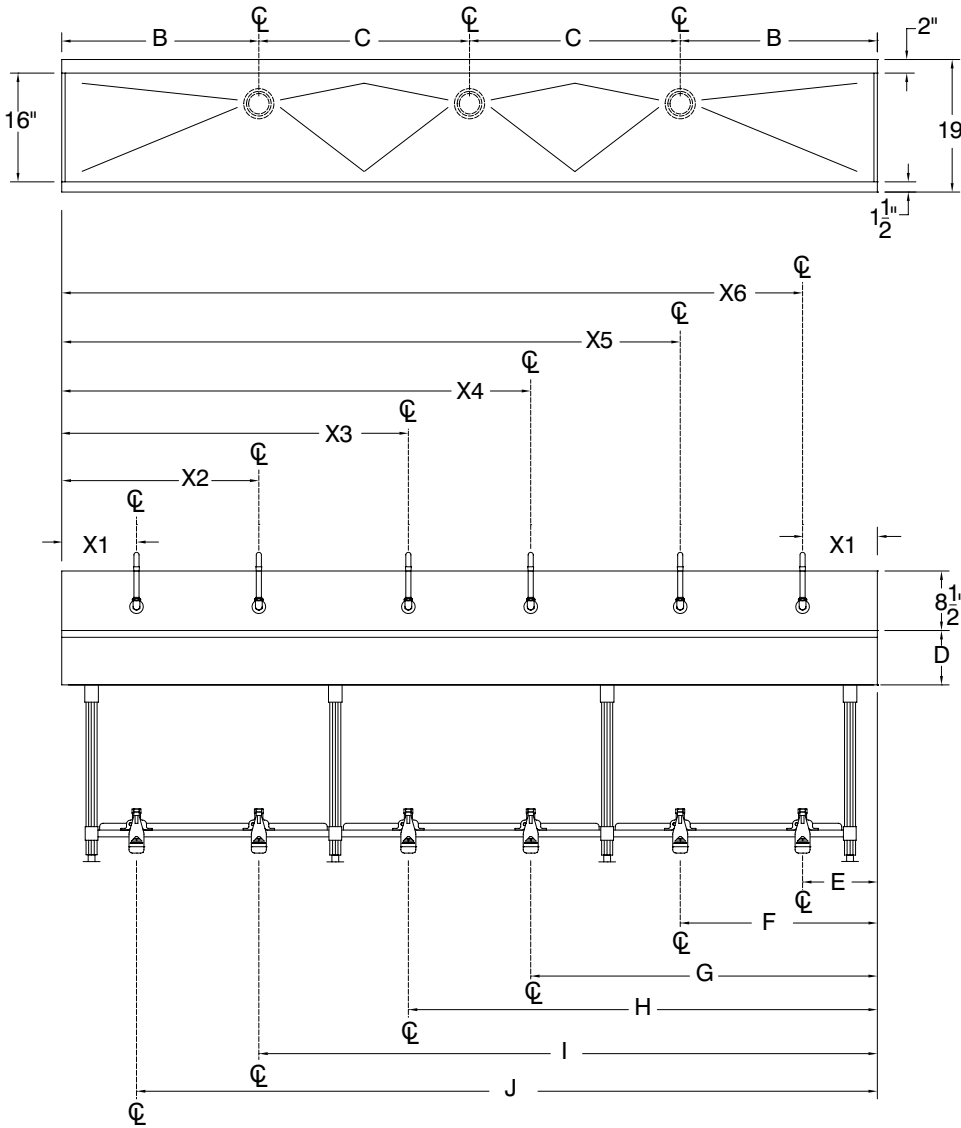
PLUMBING ROUGH-INS

TOL ± .500"

FITTINGS SUPPLIED AS SHOWN

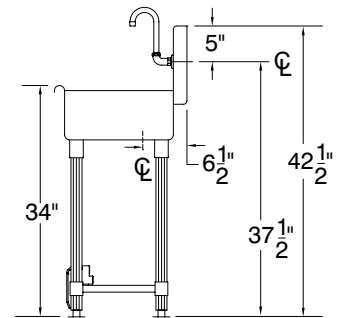
ALL DIMENSIONS ARE TYPICAL

MULTI-STATION FLOOR MOUNTED SQUARE CORNER SINKS WITH TUBULAR LEGS & CROSS BRACING TOE-PUSH OPERATED



Leg Support Locations

Model #	L1	L2	L3	L4
19-FM-23FV	4 3/16"	18 13/16"	N/A	N/A
19-FM-40FV	4 3/16"	35 13/16"	N/A	N/A
19-FM-48FV	4 3/16"	43 13/16"	N/A	N/A
19-FM-60FV	4 3/16"	55 13/16"	N/A	N/A
19-FM-72FV	4 3/16"	67 13/16"	N/A	N/A
19-FM-80FV	4 3/16"	75 13/16"	N/A	N/A
19-FM-96FV	4 3/16"	48"	91 13/16"	N/A
19-FM-100FV	4 3/16"	36 7/16"	62 1/4"	95 13/16"
19-FM-120FV	4 3/16"	39 3/4"	79 3/4"	115 13/16"



# Of Stations	L	Model	B	C	D	E	F	G	H	I	J	X1	X2	X3	X4	X5	X6
STANDARD • 8" DEPTH																	
1	23"	19-FM-23FV	11 1/2"	N/A	8"	11 1/2"	N/A	N/A	N/A	N/A	N/A	11 1/2"	N/A	N/A	N/A	N/A	N/A
2	40"	19-FM-40FV	20"	N/A	8"	11"	29"	N/A	N/A	N/A	N/A	11"	29"	N/A	N/A	N/A	N/A
2	48"	19-FM-48FV	24"	N/A	8"	11"	37"	N/A	N/A	N/A	N/A	11"	37"	N/A	N/A	N/A	N/A
3	60"	19-FM-60FV	30"	N/A	8"	11"	30"	49"	N/A	N/A	N/A	11"	30"	49"	N/A	N/A	N/A
3	72"	19-FM-72FV	36"	N/A	8"	11"	36"	61"	N/A	N/A	N/A	11"	36"	61"	N/A	N/A	N/A
4	80"	19-FM-80FV	40"	N/A	8"	11"	29"	51"	69"	N/A	N/A	11"	29"	51"	69"	N/A	N/A
4	96"	19-FM-96FV	32"	32"	8"	11"	35 11/16"	60 5/16"	85"	N/A	N/A	11"	35 11/16"	60 5/16"	85"	N/A	N/A
5	100"	19-FM-100FV	29"	42"	8"	11"	30 1/2"	50"	69 1/2"	89"	N/A	11"	30 1/2"	50"	69 1/2"	89"	N/A
6	120"	19-FM-120FV	29"	31"	8"	11"	29"	51"	69"	91"	109"	11"	29"	51"	69"	91"	109"



REF-JJ

325 Wireless Boulevard, Hauppauge, NY 11788

ADVANCE TABCO is constantly engaged in a program of improving our products. Therefore, we reserve the right to change specifications without prior notice.

© ADVANCE TABCO, FEBRUARY 2025