

Cuisine Series Heavy Duty Range Match Frymate

Project _____
 Item _____
 Quantity _____
 CSI Section 11400
 Approved _____
 Date _____

Cuisine Series Heavy Duty Range Match Frymate

Models

- C18-FMD



Model C18-FMD
 Shown as dump station
 with optional heat lamp

Standard Features

- 7" (178mm) high stainless steel stub back
- Stainless steel construction
- Stainless steel 12"x20"x2-1/2" food pan
- 1-1/4" NPT front gas manifold
- Can be installed individually or in a battery
- 6" (152mm) stainless steel adj. legs

Options & Accessories

- Solid work top in lieu of food pan
- Heat lamp for dump station, 115V 8A 500W standard
- Stainless steel main back
- Single or double deck height back riser
- Single or double deck high shelf (note optional heat lamp height 16")
- Stainless steel intermediate shelf for cabinet base
- Gas shut-off valves - 3/4", 1", 1 1/4" NPT (Specify)
- Gas regulator: 3/4", 1", 1 1/4" NPT (Specify)
- Gas flex hose w/ quick disconnect 3/4", 1", 1 1/4" NPT (Specify)
- Rear gas connection: 3/4", 1 1/4" NPT (Specify)
- Set of (4) flanged feet (for fastening unit to the floor)
- Set of (4) 5" polyurethane non - marking swivel casters w/front brakes
- Set of (4) 6" swivel casters, w/front brakes
- Extension for 1/9 pans

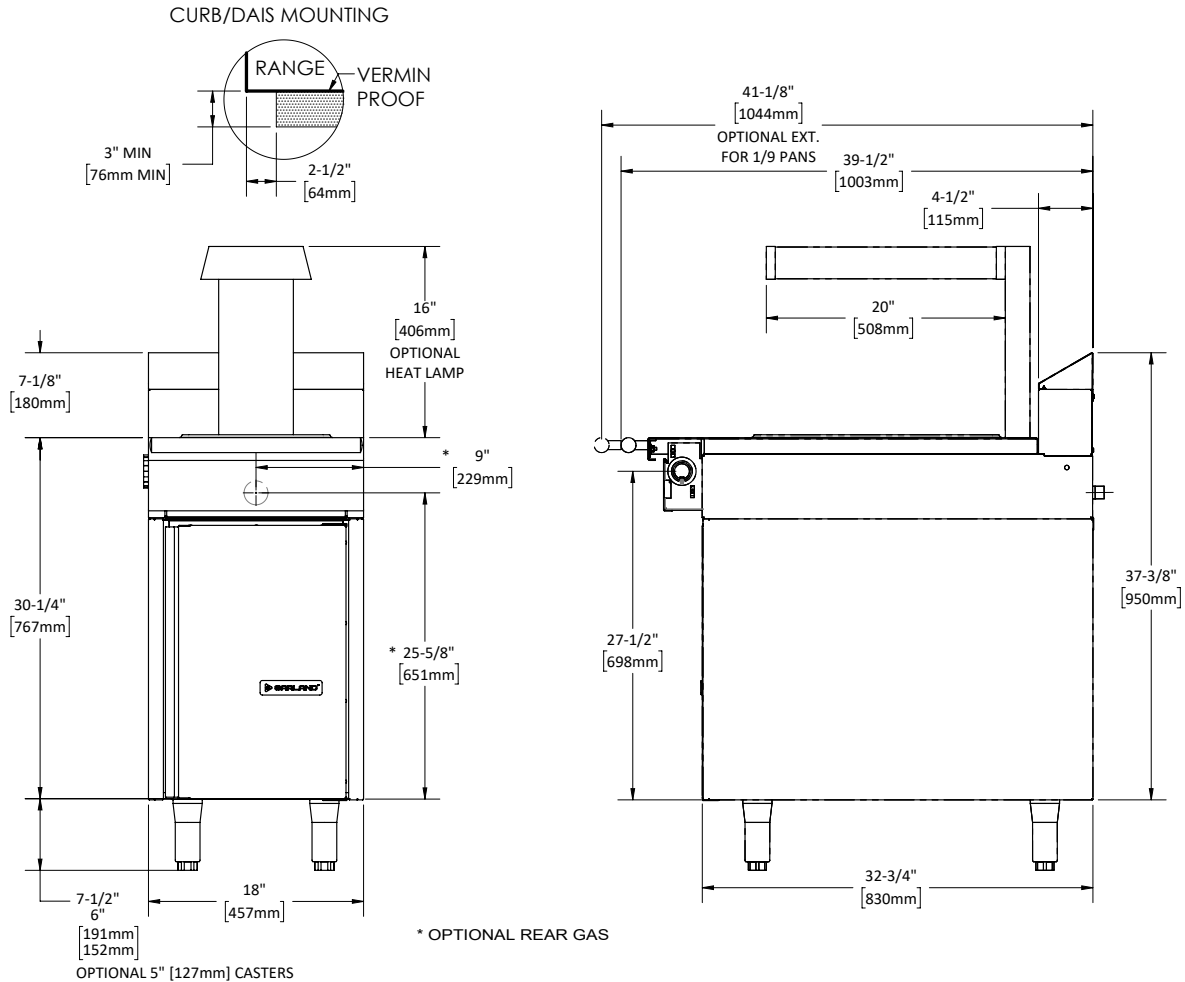
Specifications

Range match Frymate Model C18-FMD, 18" (457mm) wide with door. Storage base cabinet comes with spreader top, which has a 12" x 20" x 2-1/2" stainless steel food pan and wire rack screen. The pan fits into the cut top of the spreader. Solid work top available in lieu of the unit with food pan. Optional heat lamp available.

NOTE: Systems supplied with casters must be installed with an approved restraining device.



Cuisine Series Heavy Duty Range Match Frymate



Clearances				Shipping Weight	
Installation		Entry		Cu Ft	lb/kg
Sides	Rear	Crated	Uncrated		
6" (152mm)	6" (152mm)	29-1/4" (743mm)	18-1/4" (464mm)	35	175/75

Dimensions: In (mm)	Shipping Dimensions	Cabinet Interior
Width	29" (737mm)	15-1/2" (394mm)
Depth	45" (1143mm)	28-1/2" (724mm)
Height	45.75" (1162mm)	19-1/2" (495mm)

Garland reserves the right to make changes to the design or specifications without prior notice.

Garland Commercial Ranges Ltd.
1177 Kamato Road,
Mississauga, Ontario
L4W 1X4 CANADA

General Inquires 1-905-624-0260
USA Sales, Parts and Service 1-800-424-2411
Canadian Sales 1-888-442-7526
Canada or USA Parts/Service 1-800-427-6668

www.garland-group.com
7895
01/24

