



HOT ROCKS

SPECIFICATION SHEET



FEATURES

/ Granite stone conveyor guarantees an even distribution and retention of heat	/ Easy access front and side crumb trays to keep your oven cavity clean
/ Compatible with natural or propane gas	/ Stainless steel wire mesh entrance and exit conveyor
/ User-friendly touchscreen panel	/ Fully removable entry and exit conveyors for easy cleaning
/ Up to 6 programmable recipes	/ Stainless steel exterior panels
/ 2 to 30 minutes cook-time	/ Stackable up to 3 decks high
/ Top radiant infrared ceramic elements up to 1 000°F	/ Heavy duty locking casters
/ Baking surface temperature up to 650°F (340°C)	/ Polished black granite for easy cleaning
/ Quick and easy stone replacement	/ Quiet operation
/ Adjustable top heat settings.	

ROCKING EVERYDAY LIFE



HOT ROCKS

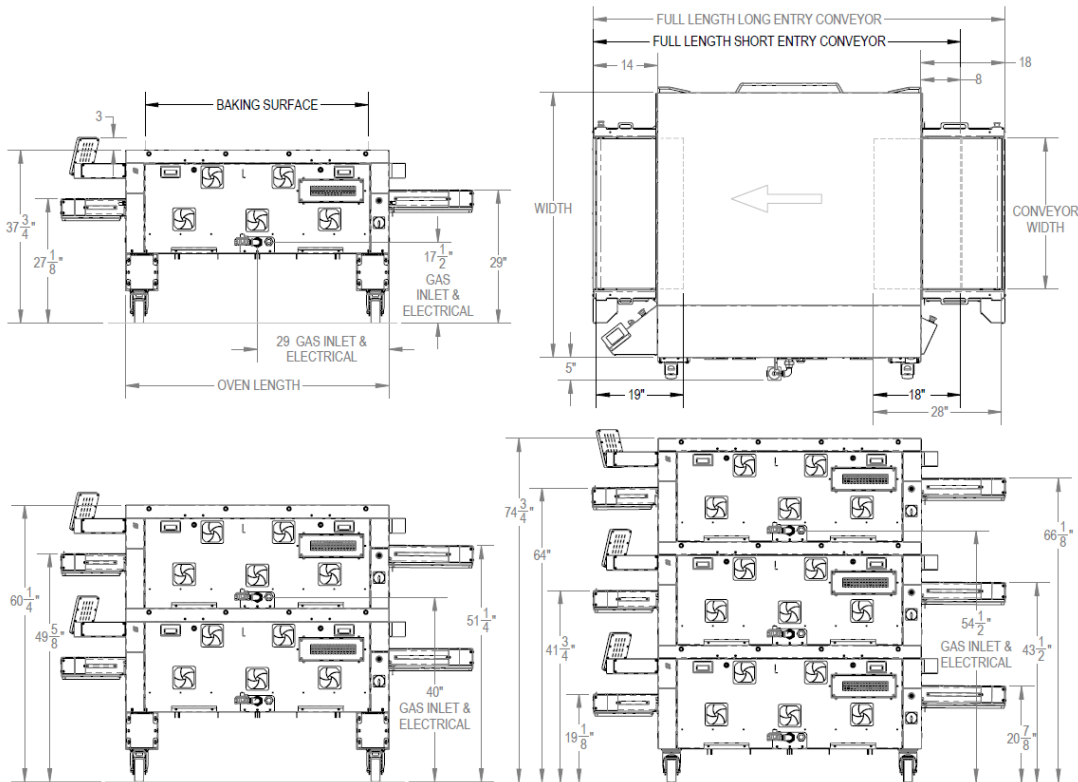
VOLCANO

OVEN OUTPUT

HR-40-33 (Baking Surface: 33 inches width x 40 inches length)													
Pizza Size		12 inches			14 inches			16 inches			18 inches		
Cooking Time (min)		4	5 1/2	7	4	5 1/2	7	4	5 1/2	7	4	5 1/2	7
# Pizzas per Hour	1 Deck	146	106	83	87	63	50	75	55	43	56	41	32
	2 Decks	292	212	167	175	127	100	150	109	86	113	82	64
	3 Decks	438	318	250	262	190	150	225	164	129	169	123	97

OVEN DIMENSIONS & WEIGHT

	HR-40-33	
BAKING SURFACE LENGTH	40 inches	102 cm
BAKING SURFACE WIDTH	33 inches	84 cm
OVEN LENGTH	57 inches	145 cm
FULL LENGTH	80 inches or 90 inches	203 cm or 229 cm
WIDTH	60 inches	152 cm
WEIGHT	1460 lb	664 kg





HOT ROCKS

INSTALLATION SPECIFICATIONS

During the entire install, the customer must close their business. (Installs average 8-12 hours)

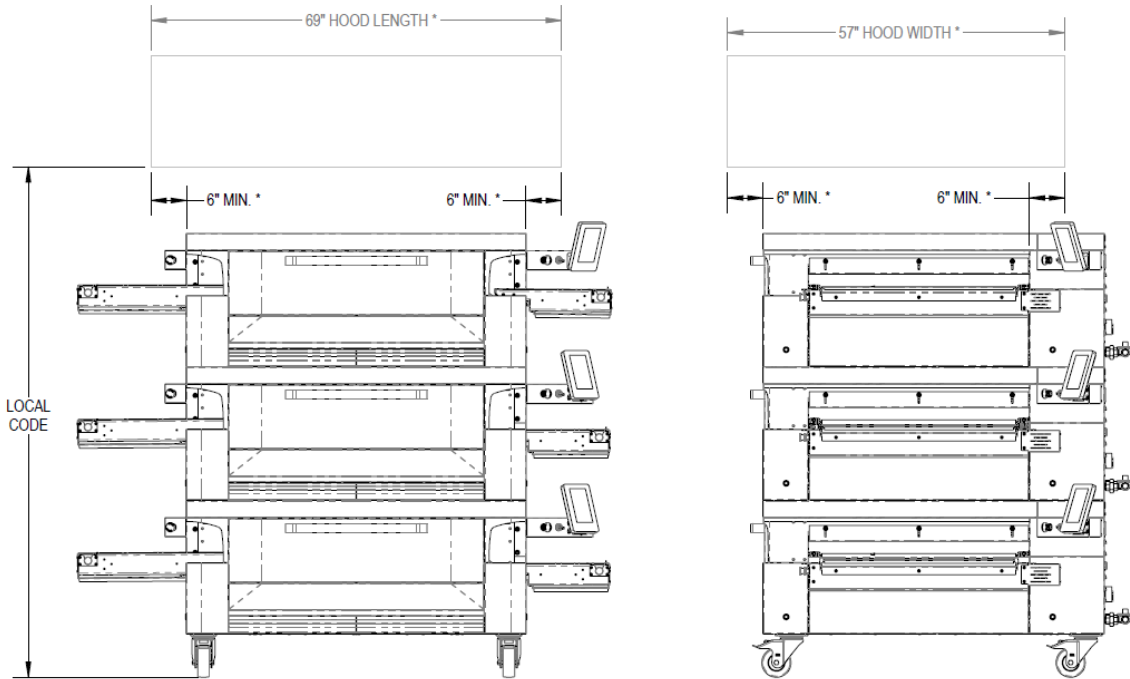
/ A Hot Rocks authorized technician will unload and assemble the oven at the customer's location. All oven parts can fit through a standard 32" x 80" door.

/ All electrical, gas, and ventilation hook-ups are by others and must be in place before the installation date.

/ This work must be done by the proper trade professionals and in accordance to local codes.

VENTILATION REQUIREMENTS (Per local code)

*****HOOD TYPE AND DIMENSIONS COULD BE DIFFERENT
AS PER THE APPLICABLE LOCAL CODE
VERIFY WITH THE LOCAL AUTHORITY*****



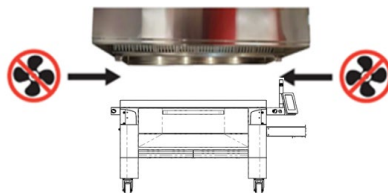
***As per International Mechanical Code (IMC) 507.1.6.1 Canopy Size and Location**

NOTE

/ External gas regulator **MUST** be provided BY OTHERS. The external oven regulator must be adjusted between 6" and 8" W.C. otherwise poor performance, ignition problem and/or damage to the oven may occur.

/ Hood type must meet your local code. Refer to your fire marshal or ventilation specialist. Negative pressure could affect the baking consistency.

/ Draft passing through the oven (AC, air make-up, doors, windows) could cause severe inconsistencies baking issues. See diagram below for example .





ELECTRICAL REQUIREMENTS

	Voltage	Amps	Watts	Phase	Hertz	Cabling
All Models	208-240V	40.8A	9800W maximum	1PH	60Hz	3 wire cord



NOTE

/ Electrical connections must be made directly from the main control box or from the service output to the oven in advance of the installation day.

/ The oven comes with 8 foot power cord and 50A 208/240V plug type NEMA 6-50P.

Example of plug 50A 250VAC type NEMA 6-50P:



CONNECTIVITY REQUIREMENTS

/ Oven must be wired connected to internet using an ethernet CAT 6E.

This granted access to remotely see for the customer the oven status and parameter online, remotely change recipe and get text message of alarm and diagnosis.

It allow a better technical service support from Hot Rocks service department for new update and feature on the oven.

PLUMBING REQUIREMENTS

A certified gas service technician is required on site for the installation

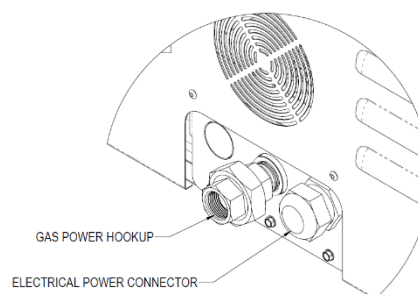
Type	Gas Pipe Inlet per Deck	Oven Gas Valve Inlet Pressure	Maximum Power Per Deck (BTU/HR) for all models
Natural / Propane	¾ NPT	6-8 inch W.C.	70000

NOTE

/ A Safety chain is provided, installation BY OTHERS. Safety chain must prevent gas hoses from straightening.

/ Gas hose and fitting BY OTHERS

/ Oven gas connection is ¾ NPT





HOT ROCKS

SHIPPING INFORMATION

SHIPPED ON OVEN'S SIDE (VERTICAL)									
	CRATE #1				CRATE #2 (STONE & ACCESORIES)				TOTAL
	WEIGHT LBS (KG)	APPROX. DIMENSIONS inch (cm)			WEIGHT LBS (KG)	APPROX. DIMENSIONS inch (cm)			WEIGHT LBS (KG)
		L	W	H		L	W	H	
HR-40-33	1185(537)	80 (203)	40 (102)	75 (191)	522 (236)	46 (117)	30 (76)	35 (89)	1707 (776)

*****During the installation a 32" wide clearance passage is needed up to the final oven location. *****

WARRANTY

Hot Rocks stone conveyor ovens come with a 5-year parts warranty and a 1-year labor warranty, providing the assurance of long-lasting quality.

