

MAXIMIZER

Gas Pizza Ovens

General Features:

- **Quality Construction** for long life
- **Stainless Steel Front Standard**
- **Pizza decks standard**
Large 52"x36"x9" compartment
1½" pizza stones
- **Large capacity**
Forty 9" (22.9cm) pizzas,
Twenty-four 12" (30.5cm) pizzas,
or Twelve 16" (43.2cm) pizzas
- **Energy efficient**
New energy-saving
"Power-Pak" burner system
coupled with our unique baffle
system for even heat and
better baking
- **Full Range Digital Thermostat**
300°F - 650°F (149°C - 343°C)
Precise temperature control
- **Space saver**
Only 66" wide
- **Stacked**
Double cooking capacity
- **Easily Serviceable**
All controls can be easily
replaced
- **Power**
Gas / Electric
- **Specific features of the**
CW200PESC are listed on back

2-2-2 Warranty:

- **Two year parts**
- **Two year labor**
- **Two year trouble free service**

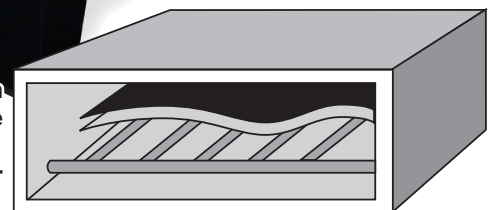


MODEL CW200PESC
PIZZA / ELECTRONIC



**GAS
FIRED**

Hearth
Baffle
Burner



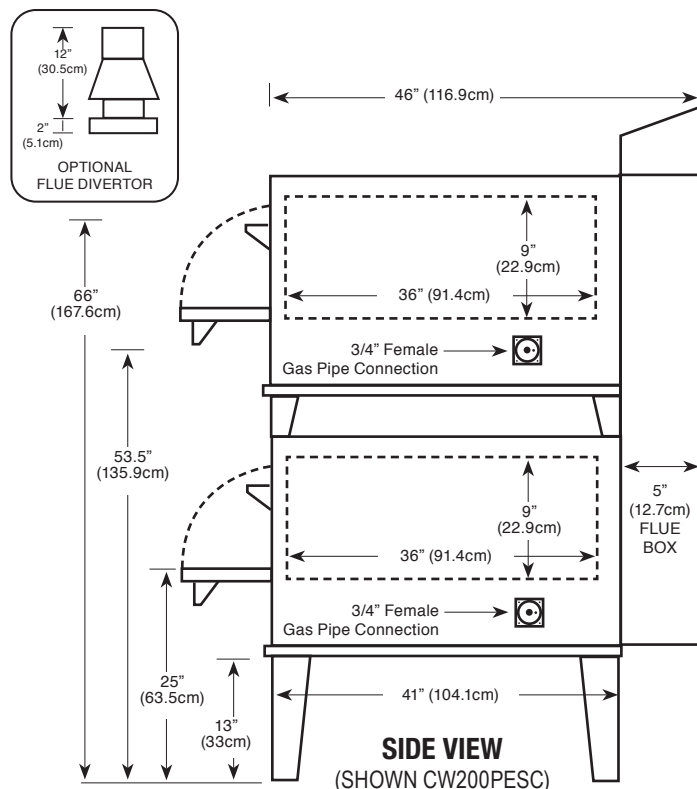
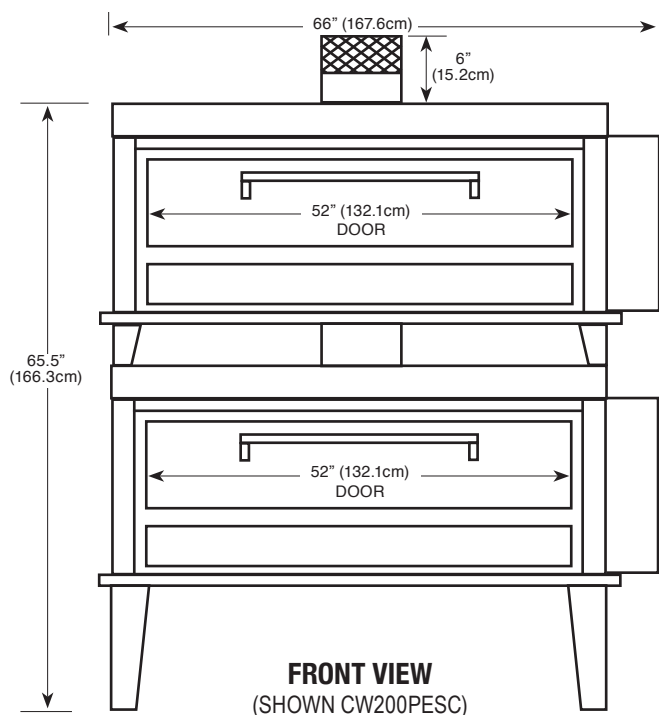
"Power-Pak" 5-Cell Burner System

MORE FOR LESS

More Cooking Space per Floor Space
More Cooking Capacity per Sales Dollar
More Performance per Gas Dollar

 **Peerless**
Commercial and Industrial Ovens

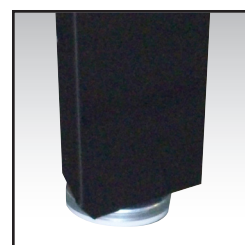
P.O. Box 859 • Sandusky, Ohio 44870 • (419) 625-4514 • FAX 625-4597



Floor space 66" (167.6cm) wide x 46" (116.9cm) deep* x 65.5" (166.3cm) high
Shelf size 52" (132.2cm) wide x 36" (91.5.3cm) deep x 9" (22.9cm) high
Shipping weight 725 lbs (328.8kg)
Capacity . . Forty 9"(22.9cm), twenty-four 12"(30.5cm) or twelve 16"(43.2cm) pizzas
Gas Maximum 100,000 (2) BTU input
 Opening required for installation: 27" * Handle adds 2.5"(6.4cm) to depth



Easily accessible controls



Adjustable Legs

Durable Construction

The CW200PESC is built with *prime 16-gauge cold-rolled top* and 18-gauge sides with a 12-gauge base. The *interior is made of Armco Type 1, 16-gauge aluminized steel*. Also, the CW200PESC comes standard with a *stainless steel front* made of high quality 18-gauge stainless steel; the door interior is 18 gauge stainless as well.

Energy Efficiency

The CW200PESC is equipped with our *new energy-saving "Power-Pak" 5-cell burner system* and our unique baffle system. These make the oven highly efficient and helps eliminate hot spots. The *heavily insulated walls*, coupled with our *special vent system*, reduces heat loss yet keep your gas dollars from going up the stack. The CW200PESC is well-powered by 200,000 BTUs which *increase its efficiency and recovery rate*.

Capacity

The CW200PESC has a super size **52"x36"x9" deck**. Actual cooking capacity depends on the size of the pizza you are cooking. The CW200PESC will hold at least forty (40) 9" pizzas, twenty-four (24) 12" pizzas, or twelve (12) 16" pizzas. Cooking time will vary according to product, but will average between 6-8 minutes.

Space Saver

Even with the digital controls on the side, the CW200PESC requires *less installation space* than our competition. The actual width needed is a *mere 66" for two super size 52"x36" deck*, almost a foot less than the competition. The CW200PESC consists of two CW100PESC ovens stacked.

Design Plus

The CW200PESC has the *controls on the right side for ease of operation and space savings*. This also places the controls in their own *air-conditioned area* so they are not affected by outside influences. In addition, the CW200PESC is *totally thermocoupled* and allows you to replace individual parts as opposed to throwing away the whole system.

2-2-2 Warranty

Two year part warranty, two year labor warranty and a two year trouble free service agreement makes the Peerless line of ovens even more desirable.



P.O. Box 859 • Sandusky, Ohio 44870 • (419) 625-4514 • FAX 625-4597