



A family company manufacturing in the USA

www.glastender.com



BLD-24 with option
stainless steel top



Intertek

4004503

Conforms to NSF/ANSI STD 2

Project: _____	AIA# _____
Item #: _____ Qty: _____	SIS# _____
Model #: _____	

Back Bar Liquor Displays

BLD

BLD-18, BLD-24, BLD-30, BLD-36, BLD-42,
BLD-48, BLD-18-S, BLD-24-S, BLD-30-S,
BLD-36-S, BLD-42-S, BLD-48-S

Standard Features

- Unfinished, open top for under counter installation
- Stainless steel interior with black vinyl-clad exterior
- Built-in LED light
- Radius step edges
- PVC step covers to reduce bottle noise

Configurable Options

Top Style:

- Open
- Stainless

Left and Right Side Finish:

- Black vinyl-clad
- Stainless steel

Specifications

Electrical

- 120V, 1 phase, 60Hz, less than 5 full load amps
- Includes on/off switch and 6-foot NEMA 5-15P grounded cord



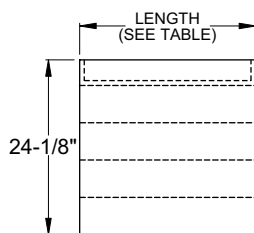
5-15P

Materials

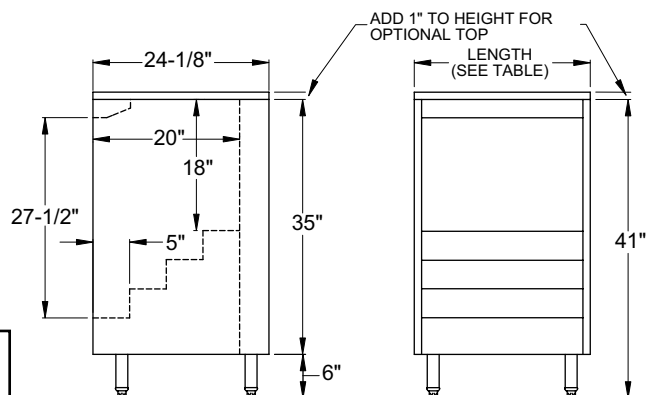
- 22 gauge black vinyl-clad parts include: exterior sides
- 20 gauge stainless steel parts include: interior side walls, back, light housing, bottom channel cover, steps, and step fillers (exterior sides 'S' models).
- 18 gauge stainless steel parts include: top channel
- 16 gauge galvanized parts include: leg channels
- PVC parts include: step covers and step ends

Drawings

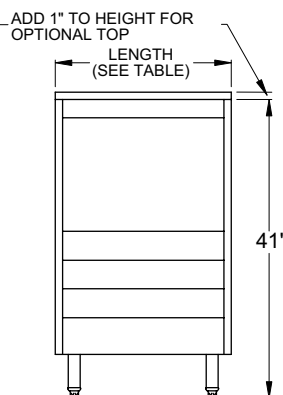
PLAN VIEW



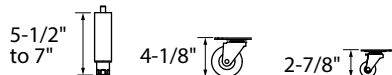
SIDE ELEVATION



FRONT ELEVATION



OPTIONAL LEGS & CASTERS



shown with optional 6" legs and optional top

Model #	Length
BLD-18	18"
BLD-24	24"
BLD-30	30"
BLD-36	36"
BLD-42	42"
BLD-48	48"
BLD-18-S	18"
BLD-24-S	24"
BLD-30-S	30"
BLD-36-S	36"
BLD-42-S	42"
BLD-48-S	48"

Glastender, Inc. • 5400 N Michigan Rd • Saginaw, MI • 48604-9780
989.752.4275 • 800.748.0423 • Fax 989.752.4444
www.glastender.com

Specifications subject to change without notice. For current specifications please visit our website.

Approval/Notes: