



STAINLESS STEEL

MULTI-STATION WALL MOUNTED SQUARE CORNER SINKS WITH TUBULAR SUPPORTS

KNEE OPERATED



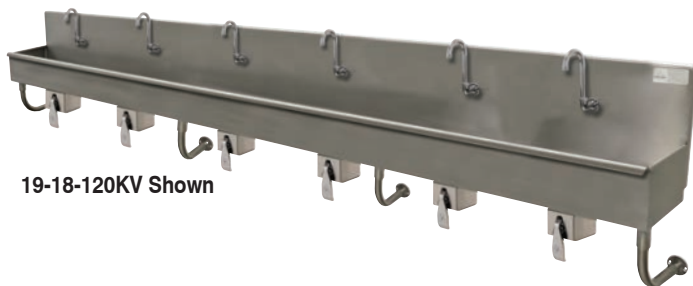
19-18-23KV Shown



19-18-60KV Shown



19-18-80KV Shown



19-18-120KV Shown

Item #: _____ Qty #: _____
 Model #: _____
 Project #: _____



Knee Valves Included

FEATURES:

8 1/2" high backsplash.

Standard Series: 8" sink bowl depth.

Stainless steel "Z" brackets.

3 1/2" **K-6** rear basket drain(s).

Tubular stainless steel support brackets that allow full clearance underneath.

Knee Operated: Includes **7-PS-32** knee valves and **K-121** spouts.

CONSTRUCTION:

All TIG welded.

Welded areas blended to match adjacent surfaces and to a satin finish.

MATERIAL:

16 gauge type "304" stainless steel.

1 5/8" tubular "304" stainless steel supports.

MECHANICAL:

Single faucet hole punch at each station.

# Of Stations	16 Gauge Sinks Without Faucets	# Of Faucets	# Of Valves
1	19-18-23KV	1 Faucet	1 Valve
2	19-18-40KV	2 Faucets	2 Valves
2	19-18-48KV	2 Faucets	2 Valves
3	19-18-60KV	3 Faucets	3 Valves
3	19-18-72KV	3 Faucets	3 Valves
4	19-18-80KV	4 Faucets	4 Valves
4	19-18-96KV	4 Faucets	4 Valves
5	19-18-100KV	5 Faucets	5 Valves
6	19-18-120KV	6 Faucets	6 Valves

WARNING: Equipment that include faucets on this page may contain a chemical known to the State of California to cause cancer, birth defects or other reproductive harm.



Customer Service Available To Assist You 1-800-645-3166 8:30 am - 7:00 pm E.S.T.

For Orders & Customer Service:

Email: customer@advancetabco.com or Fax: 631-242-6900

For Smart Fabrication™ Quotes:

Email: smartfab@advancetabco.com or Fax: 631-586-2933

REF-JJ

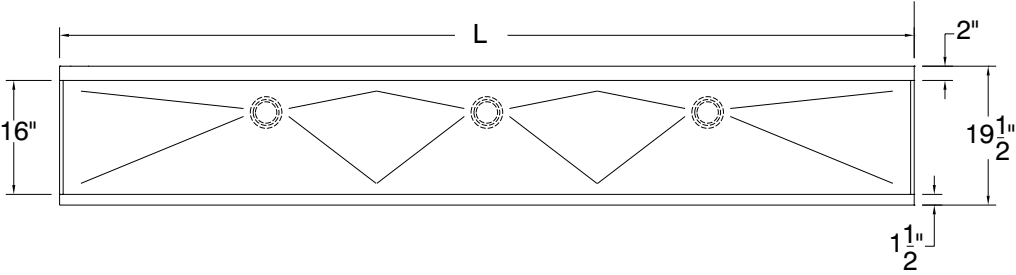
DETAILS and SPECIFICATIONS

TOL ± .500"

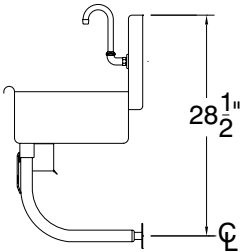
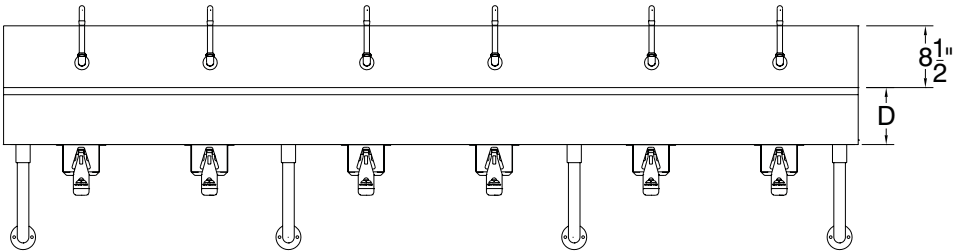
FITTINGS SUPPLIED AS SHOWN

ALL DIMENSIONS ARE TYPICAL

MULTI-STATION WALL MOUNTED SQUARE CORNER SINKS WITH TUBULAR SUPPORTS KNEE OPERATED



SEE PAGE 3
FOR
PLUMBING
ROUGH-INS



# Of Stations	L	16 Gauge Sinks Without Faucets	Wt.	# Of Drains	# Of Faucets	Cu.
STANDARD - 8" DEPTH						
2	40"	19-18-23KV	50	1	2	15
2	40"	19-18-40KV	82	1	2	15
2	48"	19-18-48KV	98	1	2	16
3	60"	19-18-60KV	120	1	3	22
3	72"	19-18-72KV	124	1	3	23
4	80"	19-18-80KV	142	1	4	28
4	96"	19-18-96KV	155	1	4	30
5	100"	19-18-100KV	180	2	5	35
6	120"	19-18-120KV	215	3	6	42



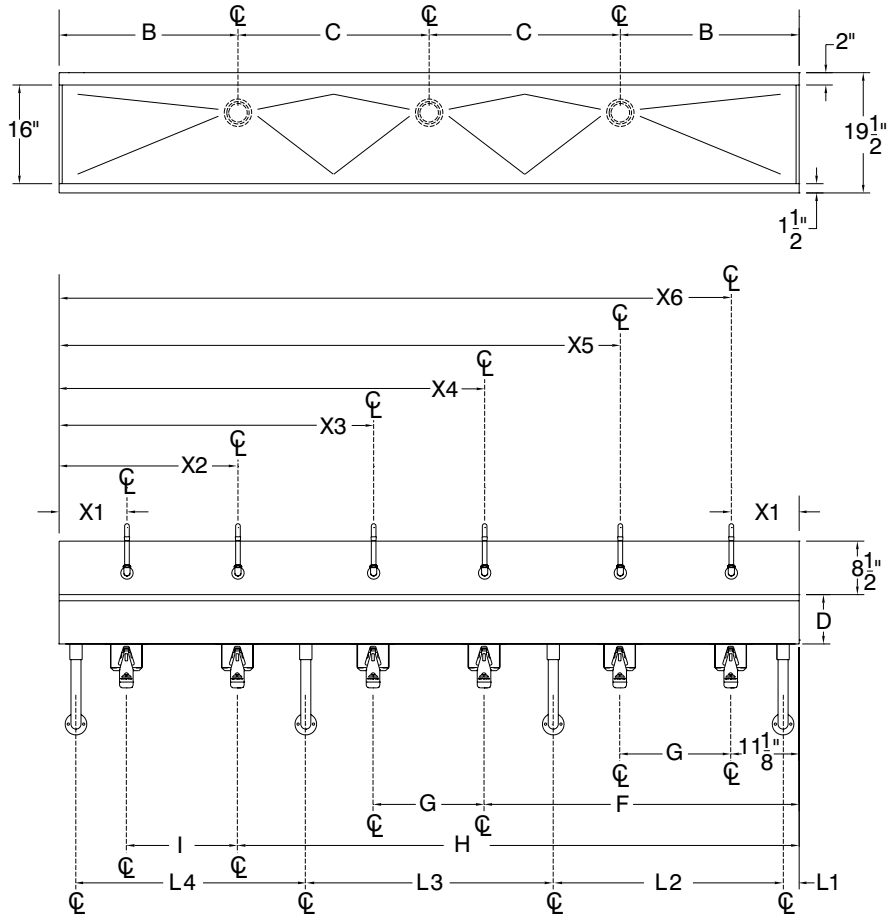
PLUMBING ROUGH-INS

TOL ± .500"

FITTINGS SUPPLIED AS SHOWN

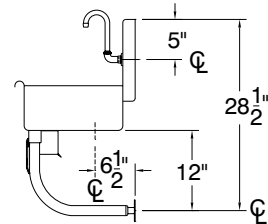
ALL DIMENSIONS ARE TYPICAL

MULTI-STATION WALL MOUNTED SQUARE CORNER SINKS WITH TUBULAR SUPPORTS KNEE OPERATED



Tubular Support Locations

Model #	L1	L2	L3	L4
19-18-23	2 5/8"	16 3/4"	N/A	N/A
19-18-40	2 5/8"	34 3/4"	N/A	N/A
19-18-48	2 5/8"	42 3/4"	N/A	N/A
19-18-60	2 5/8"	53 3/4"	N/A	N/A
19-18-72	2 5/8"	66 3/4"	N/A	N/A
19-18-80	2 5/8"	74 3/4"	N/A	N/A
19-18-96	2 5/8"	48"	93 3/8"	N/A
19-18-100	2 5/8"	40 1/4"	59 3/4"	97 3/8"
19-18-120	2 5/8"	40"	80"	117 3/8"



# Of Stations	L	Model	B	C	D	E	F	G	H	I	J	X1	X2	X3	X4	X5	X6
STANDARD - 8" DEPTH																	
1	40"	19-18-23KV	11 1/2"	N/A	8"	8 1/2"	N/A	N/A	N/A	N/A	N/A	11.5"	N/A	N/A	N/A	N/A	N/A
2	40"	19-18-40KV	20"	N/A	8"	11"	29"	N/A	N/A	N/A	N/A	11"	29"	N/A	N/A	N/A	N/A
2	48"	19-18-48KV	24"	N/A	8"	11"	37"	N/A	N/A	N/A	N/A	11"	37"	N/A	N/A	N/A	N/A
3	60"	19-18-60KV	30"	N/A	8"	11"	21"	N/A	N/A	N/A	N/A	11"	30"	49"	N/A	N/A	N/A
3	72"	19-18-72KV	36"	N/A	8"	11"	36"	61"	N/A	N/A	N/A	11"	36"	61"	N/A	N/A	N/A
4	80"	19-18-80KV	40"	N/A	8"	11"	29"	51"	69"	N/A	N/A	11"	29"	51"	69"	N/A	N/A
4	96"	19-18-96KV	32"	32"	8"	11"	34 1/4"	62"	85"	N/A	N/A	11"	34.25"	62"	85"	N/A	N/A
5	100"	19-18-100KV	29"	42"	8"	11"	30 1/2"	50"	69 1/2"	89"	N/A	11"	30.5"	50"	69.5"	89"	N/A
6	120"	19-18-120KV	29"	31"	8"	11"	29"	51"	69"	91"	109"	11"	29"	51"	69"	91"	199"



REF-JJ

325 Wireless Boulevard, Hauppauge, NY 11788

ADVANCE TABCO is constantly engaged in a program of improving our products. Therefore, we reserve the right to change specifications without prior notice.

© ADVANCE TABCO, APRIL 2025