

Item No.:

Qty.:

Project:

MF 750.2 3T Pass Thru

ROLL IN Blast Chiller and Shock Freezer



MultiFresh®: the multi-function assistant that will organize your production and processes with flexibility 24 hours a day.

MultiFresh is the first and only machine in the world that can run operating cycles with temperatures from 185°F to -40°F preserving its consistency, moisture content, and nutritional properties.

Multifunction 7" touchscreen display, product specific cycles, wide range of options, customization of all the parameters for each cycle.

Capacity

Capacity: 3 x Combi Oven Trolley (sized for 18"x26" pans)

Capacity: 6 x SLIM Rack (sized for 12"x20" pans)

Yield

Blast chilling capacity (194°F to +37°F) 1654 Lbs. (within 90 min or less)

Shock freezing capacity (194°F to 0°F) 1654 Lbs. (within 240 min or less)

R452a gas: Blast Chilling and Shock Freezing.

R448a gas: Blast Chilling only.

Product Warranty Protection

- 2 years, parts and labor.
- 5 years, compressor.

Certification



Standard Construction Features

- CABINET + REMOTE CONDENSING UNIT.
- All type 304 stainless steel construction .
- CFC-free high-density polyurethane insulation.
- Full width door with low-temperature resistant magnetic gasket.
- MultiSensor® 5-point probe for perfect temperature control.
- Automatic switch from manual mode (timed) to automatic mode (with probe) when probe is not inserted.
- The approved R452A refrigerant, used in a sealed system, is suitable for both blast chilling and shock freezing. The approved R448A refrigerant, used in a sealed system, is suitable for blast chilling only.
- High efficiency evaporators with multiple injection points.
- Data port & Wi-Fi capable data transfer to HACCP software.
- Door hinged right.
- End-of-cycle hold mode.
- Self-contained, air-cooled energy efficient condensing unit.
- Manual defrosting required at the end of the day.
- SANIGEN sanitation system.
- 2-1/4" thick insulated floor.
- Sunken Floor.
- Drain on left side (different position on request).
- Knocked down.

Unique Design and Performance Features

- 4 cycles in standard mode, 43 product specific cycles in dynamic mode; ability to record up to 20 replicable cycles into customized recipe book.
- Indirect air distribution and special airflow pattern to ensure perfect temperature uniformity.
- Moisture preservation system by "delta-t" control.
- MultiFresh® touch screen.
- Smudge-resistant controller touch pad.
- Easily accessible evaporators and waterproof fans.
- 30-40% more energy efficient than average competitor models with faster chilling times, all while preserving freshness, fragrance and organic properties of the food.

Option and Accessories

- Door hinged left.
- Ramp.
- Sous-vide core probe.
- 120° or 100° Door Stop.
- City line or Water Tower Remote Condensing unit.
- Pass thru version.
- Mirror Unit.
- Additional core probe.
- Magnetic Door Stop.
- Freshcloud Connection Kit.
- Winter Package.
- Correctional Packages.
- Anti-Vibration Feet for Condensing Unit.
- Cabinet Lighting.
- 14" or 24" Ramp Options.

- Available PLUS model version with heat cycles: THAWING, HOLDING (hot or cold), REGENERATION, PASTEURIZATION, PROOFING, LOW TEMPERATURE COOKING.

Item No.:

Qty.:

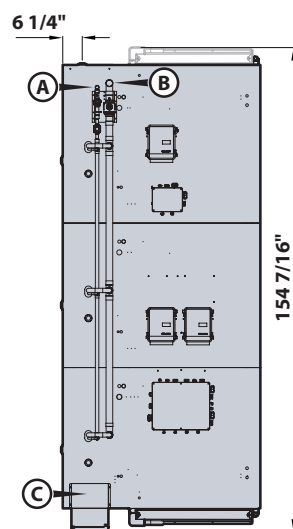
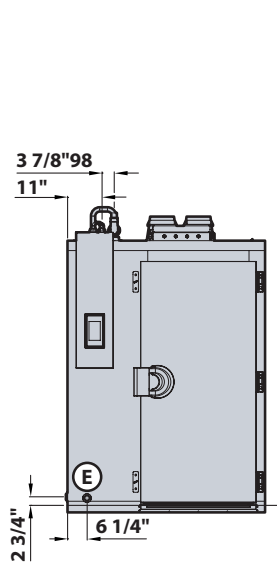
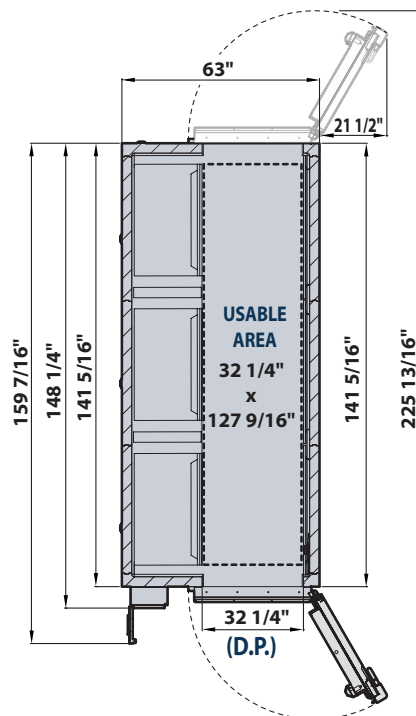
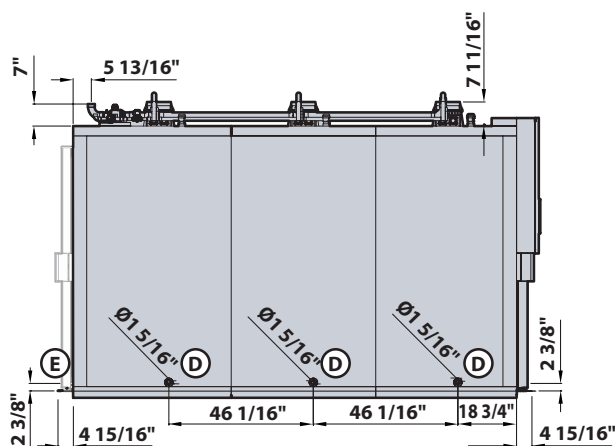
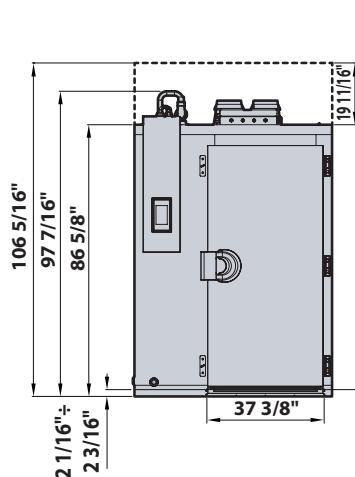
Project:

CABINET

FRONT VIEW

SIDE VIEW

TOP VIEW



DRAIN POSITION

GENERAL CHARACTERISTICS

(A) Liquid line connection

(B) Suction line connection

(C) Communication power cable inlet

(D) Standard drainage discharge ϕ In (ømm) 1" 1/4 DN32

(E) Drainage discharge on request ϕ In (ømm) 1" 1/4 DN32

(D.P.) = Door passage

The back door is optional and on request

STANDARD PACKING

Gross Weight	Lb	3043
Dimensions (W x D x H)	In	68" 7/8 x 172" 13/16 x 100" 3/8 N°1
Volume	ft ³	691.72

Item No.:

Qty.:

Project:

TECHNICAL DATA

Electric supply:		208V-3+PE 60Hz	
Variants		Standard	PLUS
Power rating	kW	10.1	33.1
Current rating	A	31.3	92.7
Minimum circuit amps (MCA)	A	31.0	109.0
Max overcurrent protection device (MOPD)	A	35.0	100.0
Main power cable	AWG	6AWG/4C	1AWG/3C + 2AWG/1C
Section of electrical cable between cell and unit	AWG	14AWG/5C	
Refrigerant type:		R404a / R448a	
Maximum ambient air temperature:	°F	90	
Cabinet weight:	Lb	2646	
Effective internal Cell volume	ft³	193	
Sunken floor (standard)		✓	
Maximum height of the cell with sunken floor	In	95" 1/4	
Pit Dimensions(Sunken Floor Version) W x D x H	In	63" 3/8 x 141" 3/4 x 2" 3/16	
Floor with ramp option		✓	
Maximum height of the cell with ramp	In	97" 7/16	
Standard ramp length	In	23" 5/8	
Optional ramp length	In	14"	
Ramp height	In	2" 5/16	
Ventilated floor with ramp option		✓	
Maximum height of the cell with ramp and ventilated floor	In	98" 5/16	
Ramp length	In	23" 5/8	
Ramp height	In	2" 5/16	

TUBES CONNECTING TO THE CONDENSING UNIT

Liquid Line Connection	øIn (ømm)	1" 1/8 (28.58 mm)
Suction line connection	øIn (ømm)	2" 1/8 (53.97 mm)
Valid for condensing units installed up to a distance of	ft	95 *

*: If a lineset is longer than 95ft to please contact the manufacturer for any changes to line sizes and p-trap placement.

BLAST CHILLER SIZE

		R452a	R448a
Yield for blast chilling cycle: (194/+37°F)	Lb	1654	1654
Yield for shock freezing cycle: (194/-0°F)	Lb	1654	-

R452a gas: Blast Chilling and Shock Freezing.

R448a gas: Blast Chilling only.

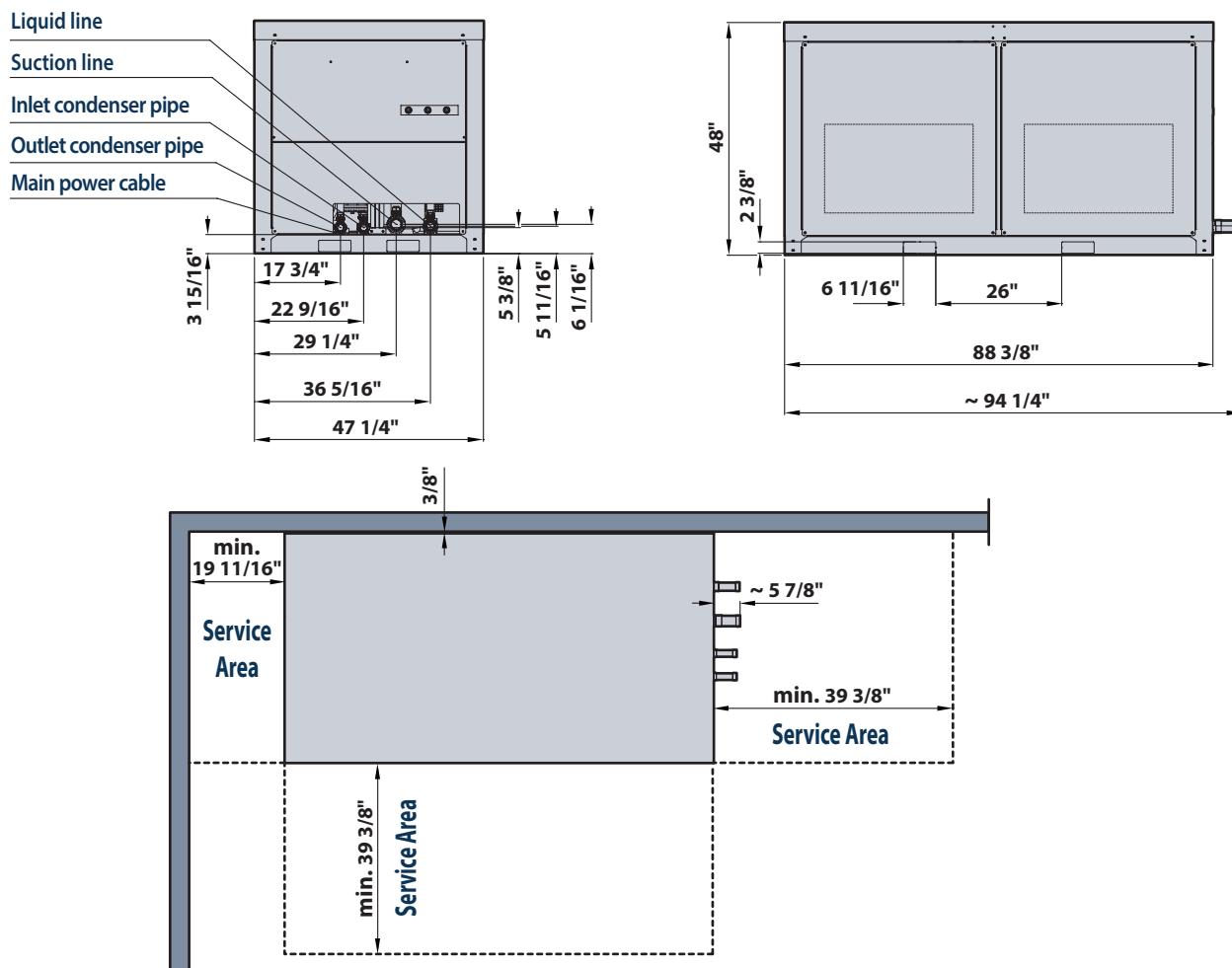
Specification could change without notice due to continuous product development.

Item No.:

Qty.:

Project:

UNIT



STANDARD PACKING

Gross Weight	Lb	1566.00
Dimensions (W × D × H)	In	68" 7/8 × 58" 11/16 × 117" 5/16 × N° 1
Volume	ft³	274.00

Item No.:

Qty.:

Project:

TECHNICAL DATA

Electric supply:	-	208V-3+PE 60Hz
Power rating	kW	68.6
Current rating	A	234.5
Minimum circuit amps (MCA)	A	286
Max overcurrent protection device (MOPD)	A	450
Main power cable	AWG	350kcmil/3C + 2-0AWG/1C
Cabinet - condensing unit connection cable	AWG	14AWG/5C
Condensing unit - condenser connection cable	AWG	14AWG/11C
Compressor rating	HP	50
Max cabinet refrigeration power at 14/104 °F (R452a/R448a)	btu/h	352902 / 334565
Max condenser heat dissipation at 14/104 °F (R452a/R448a)	btu/h	489481 / 453780
Refrigerant type:	-	R452a / R448a
Refrigerant PRE-load	oz. gas	2468.9
Liquid Line Connection	øIn (ømm)	1" 1/8 (28.58 mm)
Suction line connection	øIn (ømm)	2" 1/8 (53.97 mm)
Inlet remote condenser line	øIn (ømm)	1" 5/8 (41.27 mm)
Outlet remote condenser line	øIn (ømm)	1" 3/8 (34.93 mm)
Compressor displaced volume	ft³/h	6465.26
Maximum ambient air temperature:	°F	108
Remote unit weight:	Lb	1323
Oil Charge	gal	1.24

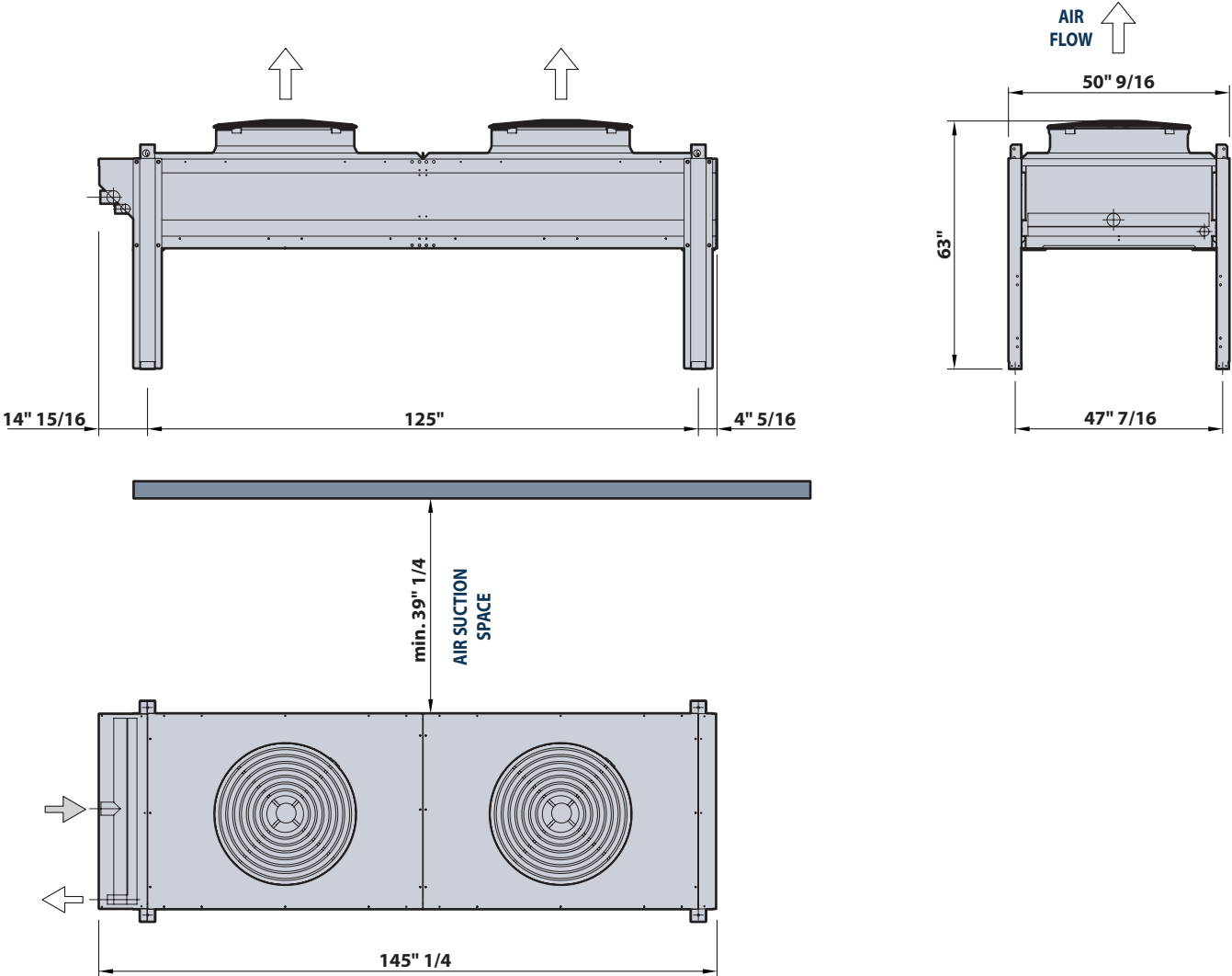
Specification could change without notice due to continuous product development.

Item No.:

Qty.:

Project:

CONDENSER



REMOTE CONDENSER			STANDARD PACKING		
Mains frequency:	-	60 Hz	Gross Weight	Lb	1000.00
Condenser noise (max) 32.8 ft	dB(A)	56.0	Dimensions (W x D x H)	In	201 15/16" x 39 3/8" x 53 1/8" x N° 1
Total air flow:	ft³/h	1976654	Volume	ft³	246.00
Fan Quantity		2			
Maximum ambient air temperature:	°F	108			
Condenser weight:	Lb	860			
Valid for remote condenser installed up to a distance of	ft	135*			

*: If a lineset is longer than 135ft please contact the manufacturer for any changes to line sizes and p-trap placement.

Specification could change without notice due to continuous product development.