



# BEVERAGE-AIR®

Project: _____	AIA# _____
Item: _____	
Location: _____	SIS# _____
Approved: _____	

## RID PASS-THRU REFRIGERATOR

RID18HC Half-Solid, Half-Glass Door Bottom Mount Refrigerator  
Hydrocarbon Series

MODEL:  
RID18HC-HGS



**7 Year Parts/Labor Warranty**  
**7 Year Compressor Warranty**

### CABINET CONSTRUCTION

- Stainless steel exterior and interior
- Full electronic control
- Interior LED light
- Five (5) shelves standard
- One piece grille
- Cartridge style hinges
- 120° Stay-open feature
- Snap-in magnetic door gaskets
- 3" Heavy duty casters with two brakes standard

### OPTIONS & ACCESSORIES

- Epoxy shelves & clips
- 6" Casters or 6" legs optional
- Wire shelf dividers
- Right or left hinged door
- Remote option\* (see note on back page)

### REFRIGERATION SYSTEM

- Refrigeration system uses R290 refrigerant to comply with all environmental concerns
- Automatic, non-electric defrost
- Epoxy coated evaporator coil
- Maintains temperature between 36° and 38°F

**RID18HC BOTTOM MOUNT: RI SERIES PASS-THRU**



Please verify qualifying units by visiting:  
[www.energystar.gov/cfs](http://www.energystar.gov/cfs)

3779 Champion Blvd., Winston-Salem, NC 27105  
1-888-845-9800 Fax: 1-336-245-6453  
Beverage-Air.com Sales@bevair.com



# BEVERAGE-AIR®

MODEL	RID18HC-HGS
<b>EXTERNAL DIMENSIONAL DATA</b>	
Width Overall	27 1/4"
Depth Overall with Handles	32 5/8"
Height Overall	72 3/8"
Number of Doors	4
Depth with Door Open 90°	80 1/8"
Door Openings (in)	24" x 24 3/4"
<b>INTERNAL DIMENSIONAL DATA</b>	
NET Capacity (cubic ft.)	18.38
Internal Width Overall (in)	24 1/4"
Internal Depth Overall (in)	25 1/8"
Internal Height Overall (in)	Max 53" Min 46 5/8"
Number of Shelves	5
<b>ELECTRICAL DATA</b>	
Full Load Amperes	5.5
Voltage	115/60/1
Nema PLug (8' cord)	5-15P
<b>REFRIGERATION DATA</b>	
Horsepower	1/4
Capacity (BTU/Hr)	1997
Heat Rejection (BTU/Hr)	2995.5
Charge (lbs/grams/ounce)	0.1875 / 85 / 3.0
<b>SHIPPING DATA</b>	
Gross Weight (crated lbs)	422 lbs
Height - Crated	75"
Width - Crated	30"
Depth - Crated	35"

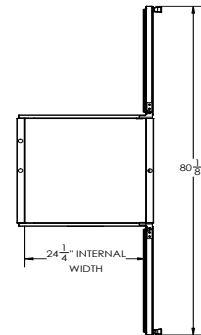
\*NOTE: Remote units are field wired and come with 6" legs.  
Refrigerant must be specified at time of order.

We reserve the right to change specifications and product design without notice.  
Such revisions do not entitle the buyer to corresponding changes, improvements,  
additions or replacements for previously purchased equipment. Dimensional  
tolerances +/- 1/4". Metric dimensions (MM).

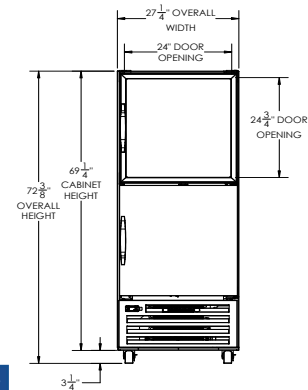
## Bottom Mount Pass-Thru Half-Solid Door, Half-Glass Door Model: RID18HC-HGS

### Model Views

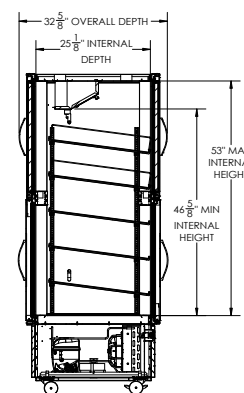
Required Clearance: 3" Bottom & Rear



### PLAN VIEW



### ELEVATION VIEW



### SIDE VIEW

## ELECTRICAL CONNECTION



115/60/1  
NEMA 5-15P

Unit pre-wired at factory  
and include 10.7' long  
cord and plug set.



3779 Champion Blvd., Winston-Salem, NC 27105 1-888-845-9800 Fax: 1-336-245-6453 Beverage-Air.com Sales@beva.com

