



KM-301BAK

SELF-CONTAINED CUBER
WITH BUILT-IN STORAGE BIN

KM|EDGE™



KM-301BAK
10/28/25
Item # 13550

W x D x H
30" x 28" x 39" *
*including 6" legs

ADA Compliant

KM|EDGE™

KM-301BAK
Air-Cooled
Shown



Features

► Individual crescent cube

► Environmentally friendly R290
hydrocarbon refrigerant

► Stainless steel evaporator

- CycleSaver™ design
- Up to 285 lbs. of ice production per 24 hours
- Built-in storage capacity of 3.3ft³/100 lbs.
- Durable stainless steel exterior
- Front-in, front-out airflow
- Removable air filter (air-cooled model only)
- Ice bin opening is ADA compliant
- 6.5 ft. (2000 mm) power cord with NEMA 5-15P plug
- EverCheck™ alert system

Warranty:

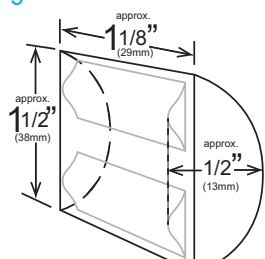
3 Year Parts & Labor on entire machine. 5 Year Parts & Labor on Evaporator. 5 Year Parts on Compressor; air-cooled condenser coil. Valid in United States, Canada, Puerto Rico and U.S. Territories. Contact factory for warranty in other countries.

Shipping: (LxWxH) 34" x 33" X 39" Volume: 25.32ft³

		ICE PRODUCTION		WATER USAGE		ELECTRICAL						
Condenser	Model	Air / Water Temp Lbs. per 24 hours 70°/ 50°F 90°/ 70°F		Potable Gal. per 100 lbs. 90°/ 70°F	Condenser Gal. per 100 lbs. 90°/ 70°F	kWh Used per 100 lbs. 90°/ 70°F	Min. Circuit/ Max. Fuse Size	Amperage	Voltage	Heat Rejection BTU/hr.	Refrigerant Charge Amount	Net / Ship Weight (lbs.)
Air-Cooled	KM-301BAK	285	210	31.0	N/A	6.0	15A	5.7A	115V/60/1	5,200	4.8 oz.	171 / 206

Power cord included

KMEdge™ Cube Dimensions*



* approximate size in inches, image not to scale

Operating Limits

- Ambient Temp Range 45 - 100°F
- Water Temp Range 45 - 90°F
- Water Pressure 10 - 113 PSIG
- Voltage Range 108 - 122V
- If GFCI is required, a GFCI breaker MUST be used in lieu of GFCI receptacle

Service

- Allow enough space at rear for water supply and drain connections. Allow at least 2" (5 cm) on right side for proper air circulation and at least 0.6" (15 mm) clearance at top for service/maintenance.

Plumbing

- Icemaker Water Supply Line: Min. 1/4" Nominal ID Copper Water Tubing or Equivalent
- Icemaker Drain Line: Min. 3/4" Nominal ID Hard Pipe or Equivalent Water-Cooled Model (Lines Must Be Independent of Icemaker)
- Condenser Water Supply Line: Minimum 1/4" Nominal ID Copper Water Tubing or Equivalent
- Condenser Drain/Return Line: Min. 1/4" Nominal ID Hard Pipe (open drain system) or Copper Water Tubing (closed loop system) or Equivalent

Water Filter

Please refer to water filter spec sheet for recommended configurations.

Hoshizaki reserves the right to change specifications without notice.



KM-301BAK

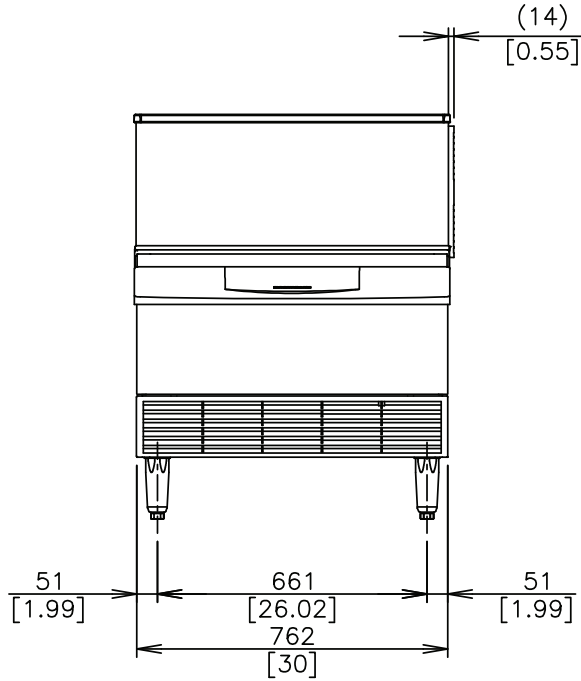
SELF-CONTAINED CUBER
WITH BUILT-IN STORAGE BIN

KM|EDGE™

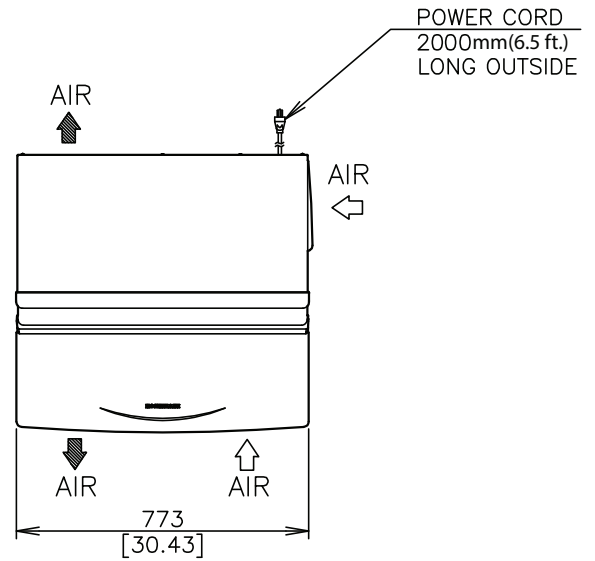
KM-301BAK
10/28/25
Item # 13550

mm
[inch]

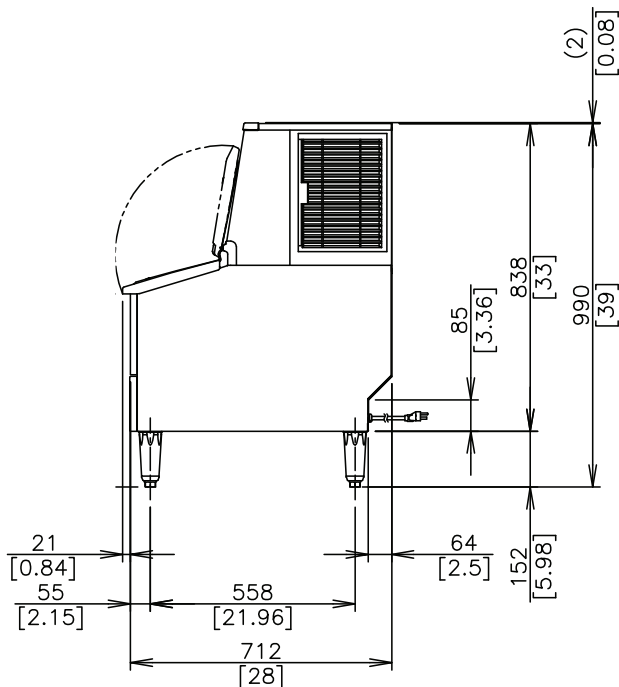
FRONT VIEW



TOP VIEW



SIDE VIEW



REAR VIEW

