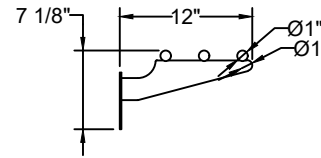
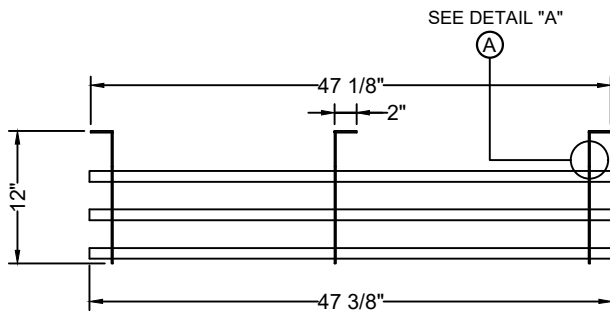


FRONT ELEVATION

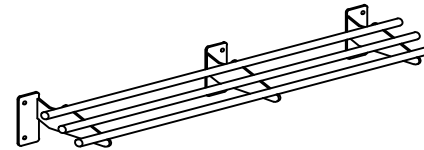


SIDE VIEW

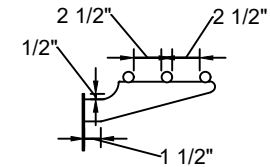
- 10GA. 304 STAINLESS STEEL CONSTRUCTION.
- 18GA. STAINLESS STEEL Ø1" TUBING.



PLAN VIEW



ISOMETRIC



DETAIL "A"

DRAWIN FOR :	MAT. TOP :10GA. 304S/S	DATE	REVISIONS	KLINGER'S TRADING
REF. NO :	BASE :			
ITEM NAME : Tray Slide	REQ'D/ITEM :			
PROD. NO. : 3TRAYSLIDE	DATE : Apr / 09 / 2025			
SCALE: 1/2" =1'-0"	BY :			
	CHECKED BY :			