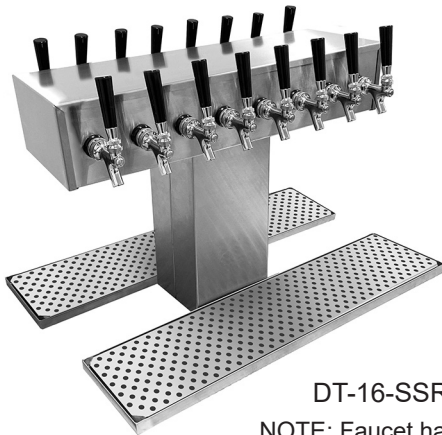




A family company manufacturing in the USA

www.glastender.com



DT-16-SSR

NOTE: Faucet handles not included.



Optional Rinser Faucet Extension -RFE

### Optional Rinser Faucet

#### Installation Notes

- Unit does not provide a 1" air gap
- Must be installed with external backflow prevention to meet applicable federal, state, and local plumbing code requirements.
- Install in-line water pressure regulator (included)
- A separate shut-off valve is recommended (not included)

**NOTE: Rinser faucets are not intended for use with towers mounted to a refrigerator due to risk of water line freeze up.**

03012383  
Rinser Faucet Assembly



**Intertek**  
4004503  
Conforms to NSF/ANSI STD 372

Project: _____	AIA# _____
Item #: _____ Qty: _____	SIS# _____
Model #: _____	

## Double-Sided Towers

DT- -

**Size:** Specify the number of faucets from 16, 20, 24, 32, 36, 40

**Finish:**  
SSR = Grainline  
MFR = Mirror  
PBR = Brass

### Standard Features

- Stainless steel construction
- Surface mount drain pans with lift-out perforated inserts
- 1/4" shanks with 3/16" restriction lines
- Insulated cold plate assembly for recirculating system
- Eco friendly foamed-in-place insulated column for extra rigidity. Eco friendly foamed-in-place insulation has zero impact on global warming or ozone depletion.
- All models include all stainless steel faucets and shanks

### Configurable Options

- One column in 16 or 20 faucets, or two column in 24, 32, 36, or 40 faucets
- Grainline, mirror, or brass finish\* (\*NOTE: Brass finish towers provided with mirror finish drain pan and brass finish perforated insert)
- Rinser faucet extension to the left or right of the drain pan; specify RFE option

### Specifications

#### Drains

- Drain pan models - 1/2" tailpiece

#### Materials

- 20 gauge stainless steel parts include: head, column, drain pan, and perforated inserts
- 16 gauge galvanized steel parts include: interior foamed box.
- 11 gauge stainless steel parts include: inner column base and top plate and tower head mounting plate

#### Shank Sizes

- 1/4" I.D. with 3/16" fittings

#### Rinser Faucet (optional)

- Accepts 3/8" cold water lead
- 30 psi water pressure regulator included
- 1.2 gallons per minute

To view cleaning and care instructions, please visit: [https://www.glastender.com/PDF/F-423-011\\_ss\\_clean\\_care.pdf](https://www.glastender.com/PDF/F-423-011_ss_clean_care.pdf)

**Glastender, Inc.** • 5400 North Michigan Road • Saginaw, MI • 48604-9780  
989.752.4275 • 800.748.0423 • Fax 989.752.4444  
www.glastender.com

Approval/Notes:

Specifications subject to change without notice. For current specifications please visit our website.

Printed in USA

DT

Rev. 01-16-25

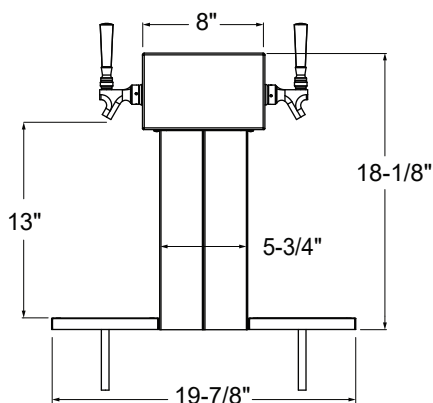
# Double-Sided Towers

## Drawings

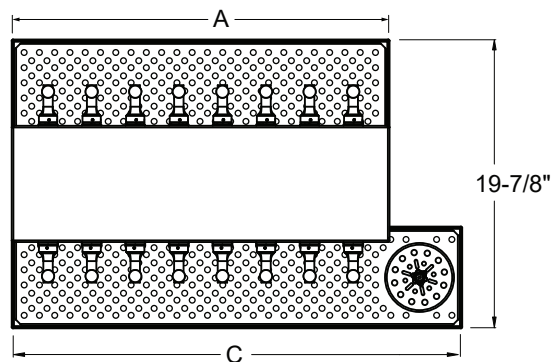
**SINGLE COLUMN DT TOWER**

FAUCETS	16	20
"A" WIDTH	26"	32"
"C" WIDTH	Each rinser faucet adds 5" to drain pan width	

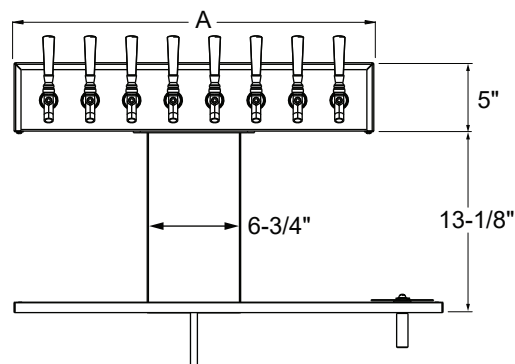
**DT SIDE VIEW**



**SINGLE COLUMN DT PLAN VIEW**

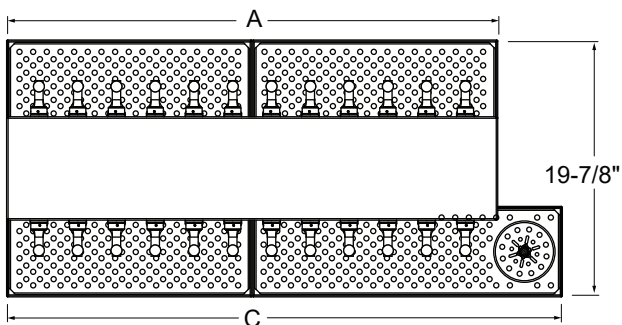


**DT FRONT ELEVATION**

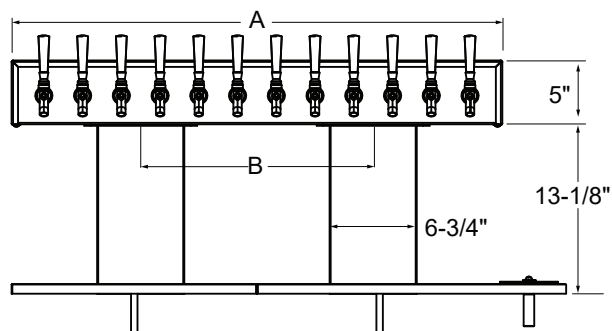


SHOWN WITH OPTIONAL RINSER FAUCET

**DOUBLE COLUMN DT PLAN VIEW**



**DOUBLE COLUMN DT FRONT ELEVATION**



SHOWN WITH OPTIONAL RINSER FAUCET

**DOUBLE COLUMN DT TOWER**

FAUCETS	24	32	36	40
"A" WIDTH	38"	50"	56"	62"
"B" WIDTH	18"	24"	27"	30"
"C" WIDTH	Each rinser faucet adds 5" to drain pan width			