

Cuisine Series Heavy Duty 24" Add-A-Unit

Project _____
Item _____
Quantity _____
CSI Section 11400
Approved _____
Date _____

Models

- C24-6S
- C24-6M



Model C24-6S
24" Add-A-Unit
Four 12" Open Burners

Standard Features

- Four 35,000 BTU/h (NG) 12" Garland Starfire open top burners
- One-piece cast iron grates and bowls over each open top burner
- Stainless steel front and sides
- Stainless steel front rail
- Stainless steel burner box
- 1-1/4" NPT front gas manifold
- Can be installed individually or in a battery
- 7" (178mm) high stainless steel stub back
- 6" (152mm) stainless steel adj. legs
- Modular unit (M) can be mounted on Polar Cuisine refrigerated base

Options & Accessories

- Single or double deck high shelf or back riser
- Full-height stand for modular base with legs or casters
- Stainless steel intermediate shelf for cabinet base
- Stainless steel door(s) for cabinet base units
- Stainless steel back
- Continuous plate rail, 48-72" for battery installations
- Gas shut-off valves: 3/4", 1", 1 1/4" NPT (Specify)
- Gas regulator: 3/4", 1", 1 1/4" NPT (Specify)
- Gas flex hose w/ quick disconnect: 3/4", 1", 1 1/4" NPT (Specify)
- Rear gas connection: 3/4", 1", 1 1/4" NPT (Specify)
- Set of (4) flanged feet (for fastening unit to the floor)
- Set of (4) 5" polyurethane non-marking swivel casters w/front brakes
- Set of (4) 6" swivel casters, w/front brakes
- Extension for 1/9 pans

Specifications

Garland Cuisine Add-A-Unit, Model _____ with total BTU/h rating _____ when used with natural/propane gas. Stainless steel finish & 6" (152mm) legs w/ adjustable feet.

Open Burners - Garland Starfire 12" open burners with 35,000 BTU/h (NG) per burner with center pilot and one-piece cast iron grates and bowls.

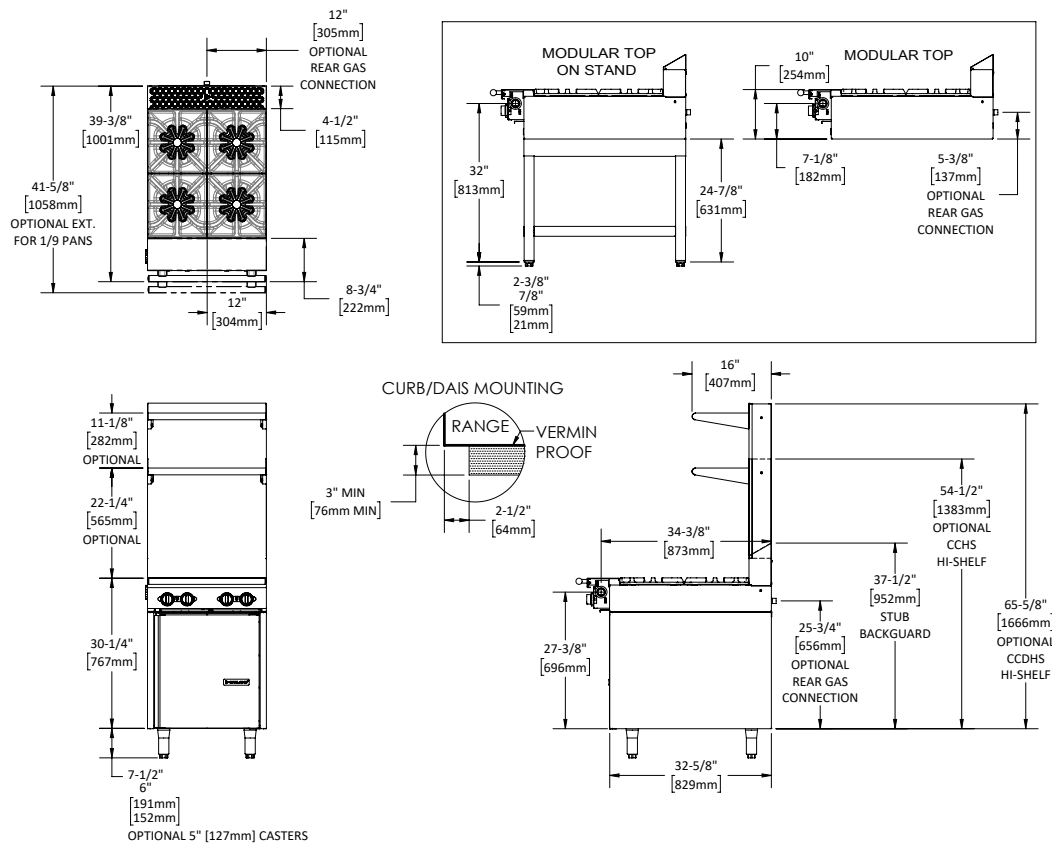
24" (610mm) modular Add-A-Units are not available w/ legs and should not be mounted independently unless installed on flanged feet and bolted to the floor

NOTE: Ranges supplied with casters must be installed with an approved restraining device.



Cuisine Series Heavy Duty 24" Add-A-Unit

Cuisine Series Heavy Duty 24" Add-A-Unit



Model #	Description	Total BTU/h NAT. Gas	Total BTU/h Propane	Shipping		Individual Burner Ratings (BTU/h)		
				Cu Ft	lbs/kg	Burner	NAT.	PRO.
C24-6S	24" (305mm) Two (2) Open Burners - Storage Unit	140,000	132,000	23	230/104	Open Tops	35,000	33,000
C24-6M	24" (305mm) Two (2) Open Burners - Modular Unit	140,000	132,000	20	225/102	Dimensions: In (mm) Unit Cabinet		
Combustible Wall Clearance						Width	24" (610mm)	19" (483mm)
Sides						Depth	37-7/8" (962mm)	28-1/2" (724mm)
Back						Height	30 1/4" (767mm)	19-1/2" (495mm)
10" (254mm)						Height w/legs	36 1/4" (921mm)	N/A
6" (152mm)						Gas Pressure	NAT.	PRO.
						Minimum Supply	7" WC	11" WC
						Manifold Operating Pressure	6" WC	10" WC
						Gas Manifold 1-1/4" NPT		

Garland reserves the right to make changes to the design or specifications without prior notice.

Garland Commercial Ranges Ltd.
1177 Kamato Road,
Mississauga, Ontario
L4W 1X4 CANADA

General Inquires 1-905-624-0260
USA Sales, Parts and Service 1-800-424-2411
Canadian Sales 1-888-442-7526
Canada or USA Parts/Service 1-800-427-6668

www.garland-group.com
7911
01/24

