



# KM-231BAK

SELF-CONTAINED CUBER  
WITH BUILT-IN STORAGE BIN

KMEDGE™



KM-231BAK  
10/28/25  
Item # 13555K

W x D x H  
24" x 28" x 39" \*  
\*including 6" legs



ADA Compliant

KM-231BAK  
Air-Cooled  
Shown





## Features

► Individual crescent cube

► Environmentally friendly R290  
hydrocarbon refrigerant

► Stainless steel evaporator

- CycleSaver™ design 
- Up to 223 lbs. of ice production per 24 hours
- Built-in storage capacity of 2.7ft³/80 lbs.\*
- Durable stainless steel exterior
- Front-in, front-out airflow
- Removable air filter (Air-cooled model only)
- Ice bin opening is ADA compliant
- 6.5ft.(2000 mm) power cord with NEMA 5-15P plug
- EverCheck™ alert system 

### Warranty:

3 Year Parts & Labor on entire machine. 5 Year Parts & Labor on Evaporator.  
5 Year Parts on Compressor; air-cooled condenser coil.  
Valid in United States, Canada, Puerto Rico and U.S. Territories. Contact factory for  
warranty in other countries.

Shipping: (LxWxH) 34" x 33" X 39" Volume: 25.32ft³

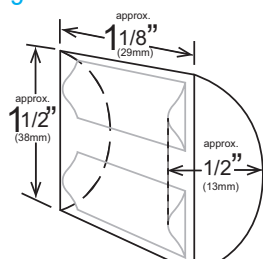
### ICE PRODUCTION

### WATER USAGE

### ELECTRICAL

Condenser	Model	Air / Water Temp Lbs. per 24 hours		Potable Gal. per 100 lbs.	Condenser Gal. per 100 lbs.	kWh Used per 100 lbs.	Min. Circuit/ Max. Fuse Size	Amperage	Voltage	Heat Rejection BTU/hr.	Refrigerant Charge Amount	Net / Ship Weight (lbs.)
		70°/ 50°F	90°/ 70°F	90°/ 70°F	90°/ 70°F	90°/ 70°F						
Air-Cooled	KM-231BAK	223	163	34.0	N/A	6.2	15A	5.2A	115V/60/1	3,400	4.1 oz.	137 / 165

## KMEdge™ Cube Dimensions\*



\* approximate size in inches, image not to scale

## Operating Limits

- Ambient Temp Range 45 - 100°F
- Water Temp Range 45 - 90°F
- Water Pressure 10 - 113 PSIG
- Voltage Range 108 - 122V
- If GFCI is required, a GFCI breaker MUST be used in lieu of GFCI receptacle

## Service

- Allow enough space at rear for water supply and drain connections. Allow at least 2" (5 cm) on right side for proper air circulation and at least 0.6" (15 mm) clearance at top for service/maintenance.

## Plumbing

- Ice maker Water Supply Line: Minimum 1/4" Nominal ID Copper Water Tubing or Equivalent
- Ice maker Drain Line: Minimum 3/4" Nominal ID Hard Pipe or Equivalent

## Water Filter

Please refer to water filter spec sheet for recommended configurations.

Hoshizaki reserves the right to change specifications without notice.



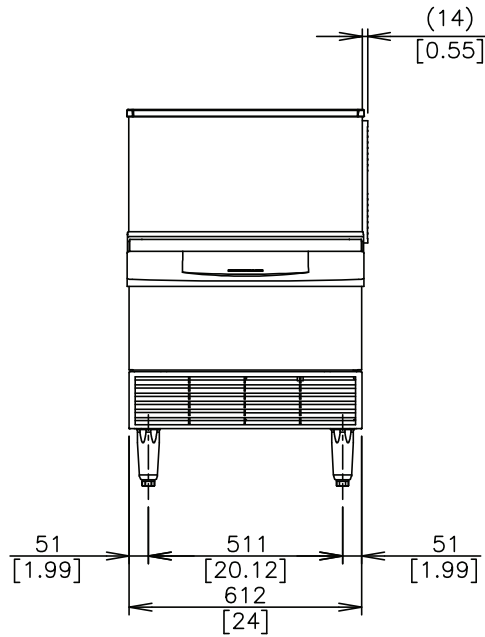
# KM-231BAK

SELF-CONTAINED CUBER  
WITH BUILT-IN STORAGE BIN

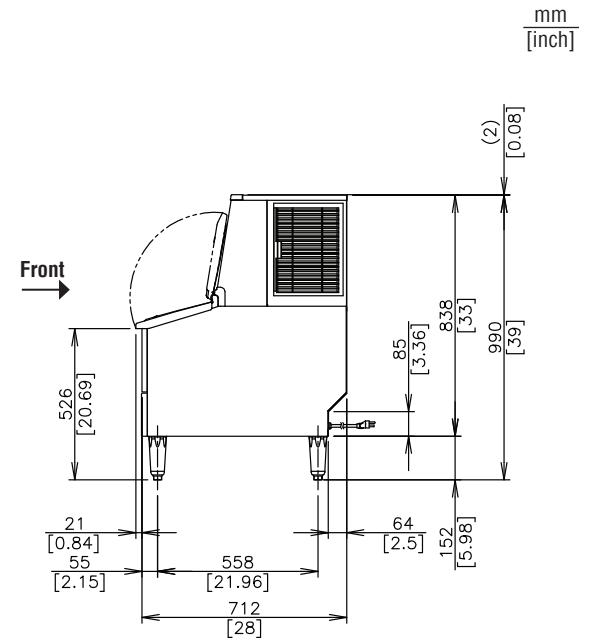
KM|EDGE™

KM-231BAK  
10/28/25  
Item # 13555K

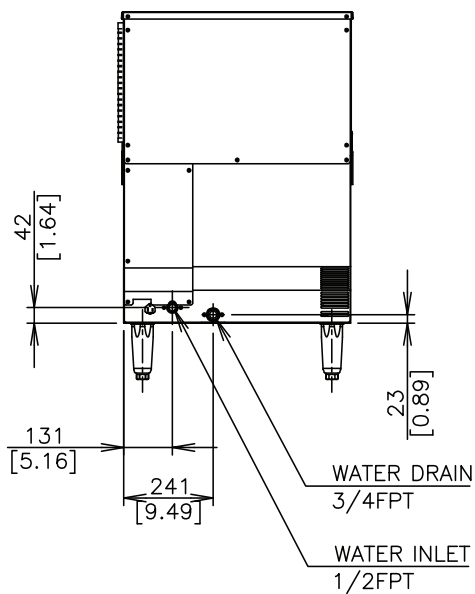
FRONT VIEW



SIDE VIEW



REAR VIEW



TOP VIEW

