

Wood-Fired Oven
FW110 Morello Forni



STANDARD FEATURES

- Wood fired stone hearth oven
- Constructed from premium high grade alumina complete with heavy metal enclosure and stand.
- Oven walls average 7" thickness with completely sealed wall enclosures.
- Thermal insulation minimum 6" from top to bottom requiring 3" clearance to combustible materials.
- Refractory materials vibrated during curing process to produce exceptionally dense and resistant work surface
- Thermal insulation made of mineral fibre with high insulating properties
- Removable cooking surface slabs
- Granite slab work surface mounted outside mouth opening
- Iron wood holder

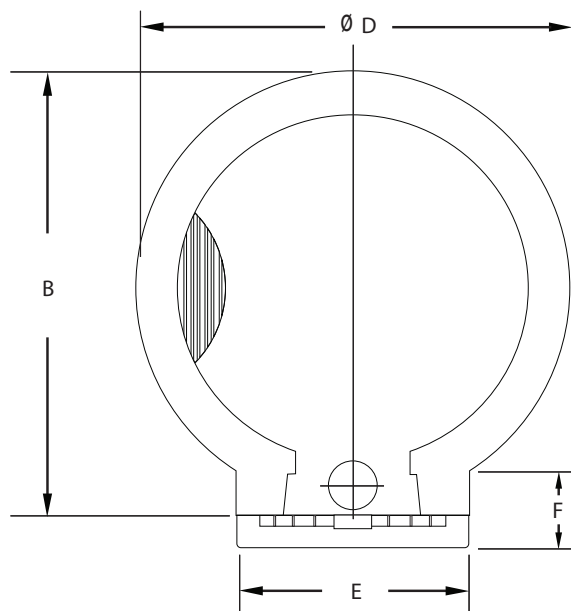
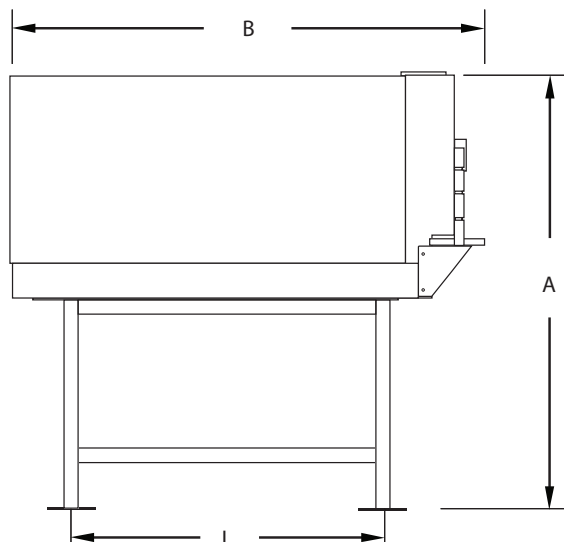
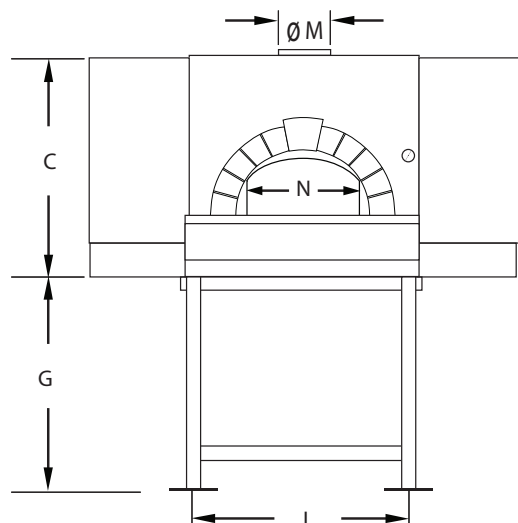
ITEM:

PROJECT:

DATE:

**Wood-Fired Oven
FW110**

Wood-Fired Oven FW110 Forni



FLUE CONNECTION

All ovens are provided with an exhaust flue collar $\frac{1}{2}$ " or $2\frac{1}{2}$ " in height and 8" or 10" nominal diameter depending on model. The flue collar ($\varnothing H$) is located on oven top to provide a secure connection to the chimney. The oven flue collar is designed to be connected to chimney listed to UL-103HT. When working on gas only ovens, the oven is suitable for connection to Type B Gas Vent when used with the draft hood. When burning wood, an independent Flue evacuation system is required.

ELECTRICAL CONNECTION

Verify the power supply has the same rating as the oven.

AIR SUPPLY

These ovens require make-up air to replace combustion air and excess air taken out by the flue. Always check for adequate openings to allow required make-up air flow in. Check table included in operations manual.

Model/ Specifications	FW110 (43")	Cooking Time	
		Capacity	(6) x 11"
Weight (lbs.) [Stand]	2,500 [200]	Individual Pizza	2 ~ 3 minutes
		Pan Pizza	4 ~ 6 minutes

Model/ Dimension (inches)	A	B	C	$\varnothing D$	E	F	G	I	L	$\varnothing M$	N
FW110 (43")	74	65	35 $\frac{1}{2}$	58 $\frac{1}{4}$	31 $\frac{1}{2}$	11 $\frac{1}{2}$	38 $\frac{1}{4}$	29 $\frac{1}{8}$	42 $\frac{1}{2}$	8	21 $\frac{1}{2}$



Rosito Bisani Imports, Inc.
940 South La Brea Avenue, Los Angeles CA, 90036
Tel: 323-937-1888 • Fax: 323-938-0728 • Toll Free: 1-800-848-4444
E-mail: sales@rosito-bisani.com
www.rosito-bisani.com
530 South Henderson Road, Suite F, King of Prussia PA, 19406
Tel: 610-265-5950 • Fax: 888-576-8524