



DIRECT STEAM QUAD LEG KETTLE



OPERATION SHALL BE BY:

Direct steam at a minimum of 5 PSI (34 kPa) and a maximum of 20 PSI (137 kPa).

MODEL	CAPACITY	
KDLS-125	125 Gallon	473 Liter
KDLS-150	150 Gallon	568 Liter

OPTIONS & ACCESSORIES AT ADDITIONAL COST

- | | |
|--|--|
| <input type="checkbox"/> 35 psi (241 kPa) high pressure operation for higher cooking temperature (HP-35) | <input type="checkbox"/> Strainer hook (SH) |
| <input type="checkbox"/> 3" (76 mm) draw-off valve with perforated strainer (TVS-3) | <input type="checkbox"/> Graduated measuring strip (CMS-) |
| <input type="checkbox"/> Etched gallon markings (GM-) | <input type="checkbox"/> Steam trap assembly, consisting of steam trap, steam control valve, line strainer, check valve, (STA-1) |
| <input type="checkbox"/> Etched litre markings (LM-) | <input type="checkbox"/> Single pantry kettle filler (SP-KF) |
| <input type="checkbox"/> Correctional package | <input type="checkbox"/> Double pantry kettle filler (DP-KF) |
| <input type="checkbox"/> Triple basket assembly (TBA-) | <input type="checkbox"/> Single pantry faucet with swing spout (SF-12) |
| <input type="checkbox"/> Solid disc for draw-off valve (TSS-) | <input type="checkbox"/> Double pantry faucet with swing spout (DF-12) |

STANDARD CONSTRUCTION SPECIFICATIONS

Shall be a Southbend Steam model KDLS-125 or KDLS-150, direct steam connected quad leg kettle.

A double wall kettle interior shall form a steam jacket around lower 2/3 of the kettle.

The bottom of the kettle shall be of hemispherical design for superior heat circulation.

Kettle shall be mounted on four stainless steel tubular legs.

Each leg shall be fitted with a 4 hole adjustable flanged foot for securing to the floor.

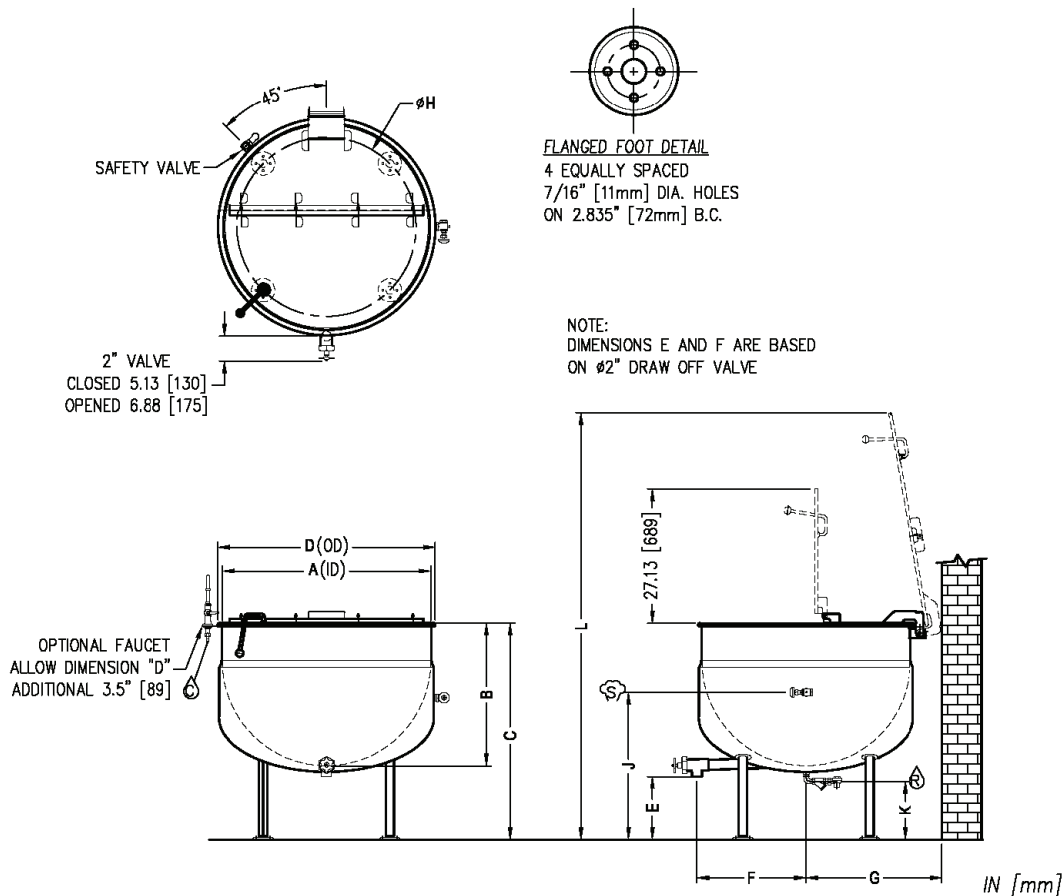
Construction shall be all welded satin finish stainless steel type 304.

The kettle interior shall be stainless steel type 316.

Convenience features shall include a 2" (50 mm) sanitary draw-off valve with perforated strainer, a hinged flat split stainless steel cover.



Approval Notes: _____

**SERVICE CONNECTIONS**

- ☁ – STEAM SUPPLY: 3/4" IPS (19 mm) 5-20 PSI (34-137 kPa). Optional 5-30 PSI (34-206 kPa).
- Ⓒ – COLD WATER: 3/8" O.D. tubing to kettle fill faucet (OPTIONAL)
- Ⓓ – CONDENSATE RETURN: 1/2" IPS (13 mm)

DIMENSIONS

MODEL	CAPACITY	UNITS	A	B	C	D	E	F	G	H	J	K	L
KDLS-125	125 gallons (473 liters)	in (mm)	42" (1067)	28.75" (730)	43.75" (1111)	44" (1118)	12.43" (316)	22" (559)	27.5" (699)	36.12" (918)	29.88" (759)	12.0" (305)	86.38" (2194)
KDLS-150	150 gallons (568 liters)	in (mm)	42" (1067)	33" (838)	48" (1219)	44" (1118)	12.43" (316)	22" (559)	27.5" (699)	36.12" (918)	29.88" (759)	12.0" (305)	90.5" (2299)

SPECIFICATIONS

MODEL	SHIPPING WEIGHT	MINIMUM CLEARANCE	
KDLS-125	425 lbs. [193 kg]	SIDES	3 [76]
KDLS-150	465 lbs. [211 kg]	BACK	.5 [13]

**INTENDED FOR COMMERCIAL USE ONLY.
NOT FOR HOUSEHOLD USE.**

