

# Pharmacy Refrigerator

Model MP-67RM-HC



## Scope of Application:

Designed for storage of biological products, vaccines, pharmaceuticals & medical products. Suitable for use in pharmacies, pharmaceutical distribution centers & prevention, hospitals, centers for disease prevention & control, research laboratories and medical clinics.

Medical Pro, LLC  
A Division of Consolidated Brands of America  
251 Little Falls Dr | Wilmington, DE 19808

Tel: 302.438.8055  
Email: [mp@cboamerica.com](mailto:mp@cboamerica.com)



## Product Features



### Superior Performance

- Precise temperature controller maintains 2°C to 8°C throughout the chamber with adjustable increments of 0.1°C
- Oversized air-cooled condenser improves for improved reliability and refrigeration efficiency.



### Reliable Operation

- Temperature uniformity inside chamber
- Alarms including high/low temperature & door ajar



### Safe & Ergonomic Design

- Double-pane glass door allows a clear view of stored products without condensation at 90°F and 55% relative humidity ambient conditions
- Powder coated, easy to clean exterior and interior
- Anti-corrosion 304 series stainless steel interior floor
- LED interior light saves energy and provides bright lighting of interior to easily find and identify products
- Reinforced structure for up to 85 lbs of weight per shelf

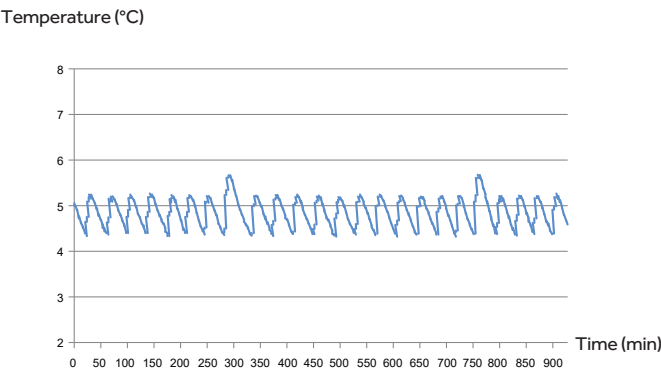
## A Closer Look



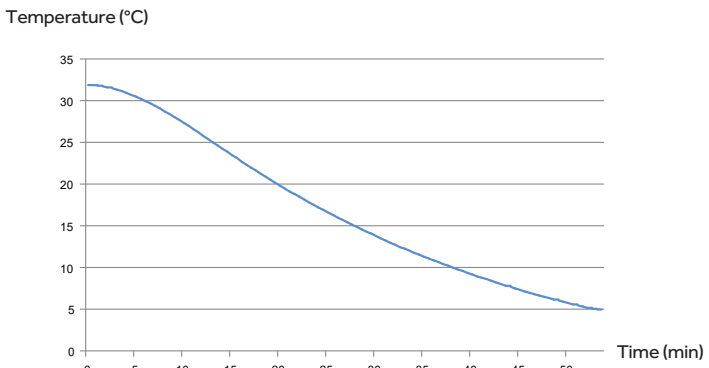
Temperature Data



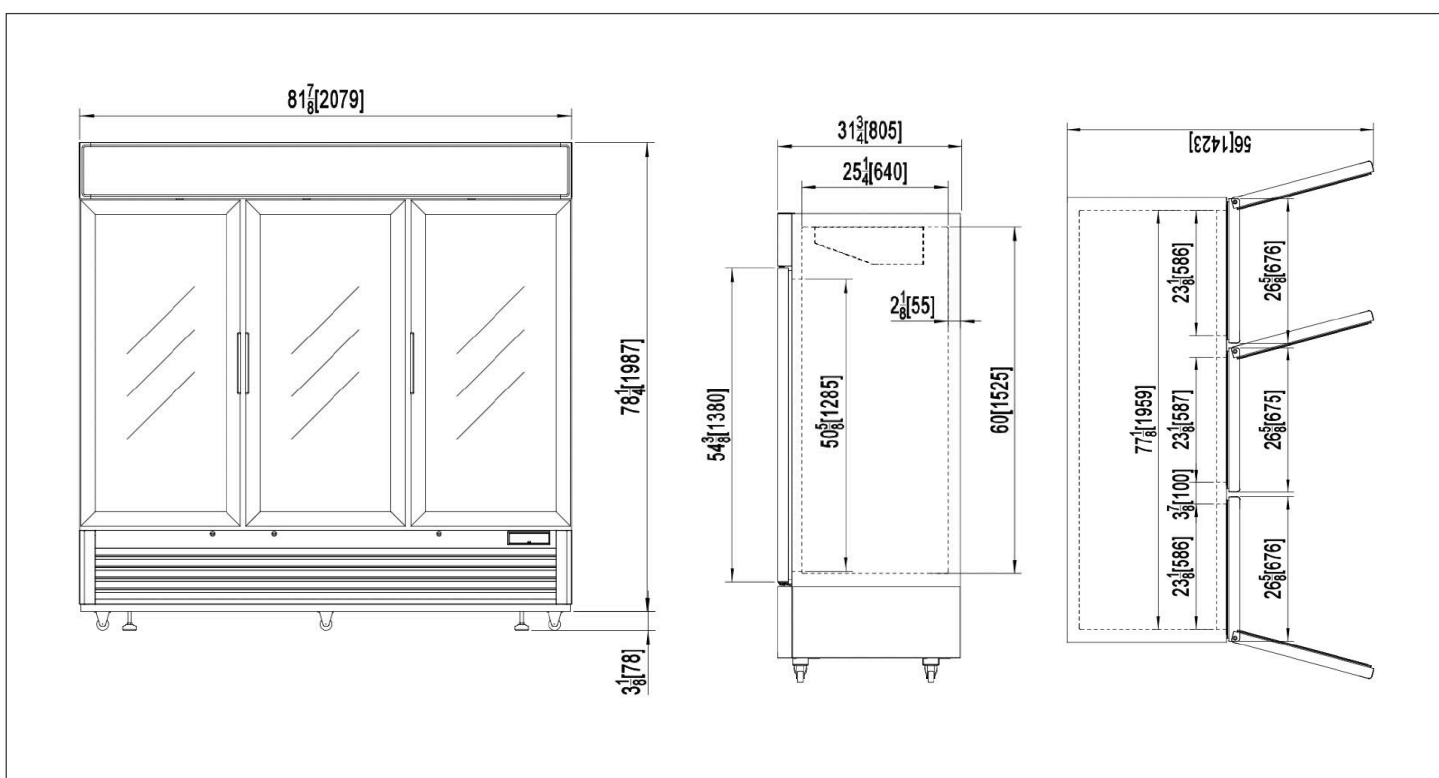
Stability curve at 32°C ambient



Cool down curve at 32°C /89.6°F ambient



Product Dimensions



## Specifications



Model		MP-67RM-HC	
Technical Data	Cabinet Type	Upright, Triple Door	
	Cubic Capacity (cu/ft)	67	
	Cooling Type	Forced Air Cooling	
	Defrost Mode	Auto	
	Refrigerant	R290 Hydrocarbon	
	Chamber Uniformity	(+/-) 1° C	
Performance	Temperature Range (°C)	2-8	
Control	Controller	Microprocessor	
	Display	LED	
Electrical Data	Power Supply (V/Hz)	115/60	220~240/50/60
	Energy Consumption (kwh/24 hrs)	5.8	360
	Electrical Current (A)	4.2	1.8
Dimensions	Capacity (Cu.Ft/L)	67/1,897	
	Net/Gross Weight (approx)	kg	296
		lbs	652
	Interior Dimensions (W*D*H)	mm	1958*693*1524
		in	77.1*27.3*60
	Exterior Dimensions (W*D*H)	mm	2080*806*2068
		in	81.9*31.75*81.4
	Packing Dimensions (W*D*H)	mm	2134*864*2108
		in	84*34*83
	Container Load (20'/40'/40'H)	7/14/14	
Alarms	High/Low Temperature	Y	
	Probe Failure Alarm	Y	
	Door Ajar	Y	
Standard Features	Access Port	7/8"	
	Product Simulator	Glycol Bottle & Probe	
	Dry Contacts	Y	
	Casters	Y	
	Leveling Feet	Y	
	Self Closing & 90° Hold Open Door Feature	Y	
	Shelves/Drawers	12	
Accessories	USB Interface	N/A	N/A
	Printer	N	
Other	Certification	ETLus	ETL Canada

Product appearance and specifications are subject to change without notice