

Fusion

MD 85"H Self-Service Refrigerated Doored Case Self-Contained

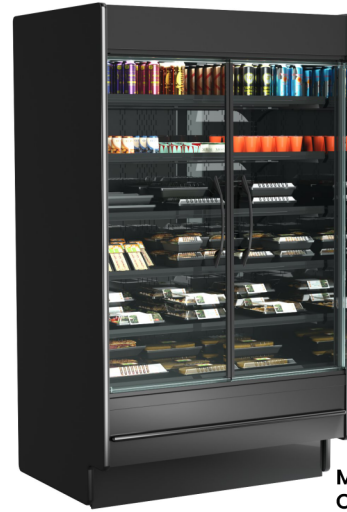
Structural Concepts®

DELIVERING FRESH. ALWAYS.™

- MD485DR 50-1/4"L x 37-1/8"D x 85-1/2"H
- MD685DR 74-1/4"L x 37-1/8"D x 85-1/2"H

Included

- Breeze self-contained refrigeration
- 1 year parts & labor warranty, 5 year compressor warranty
- Glass swinging front doors
- Hydrocarbon refrigerant (R290)
- LED top & shelf lights
- MD485DR - 2 Doors
- MD685DR - 3 Doors
- Stainless steel rear exterior
- Warmest average product temperature of 40°F or less



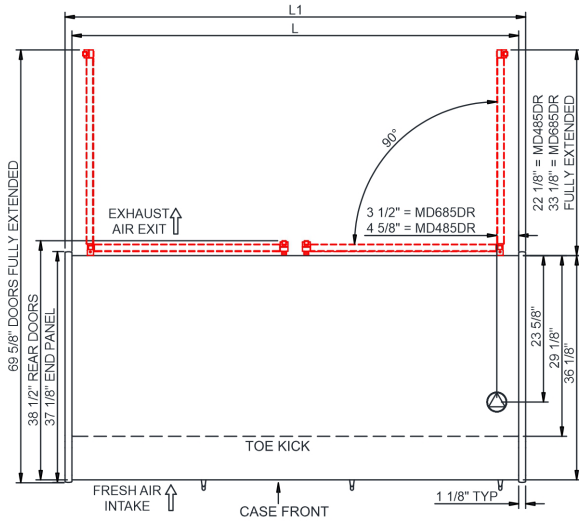
MD485DR Shown With Optional French Doors

| Specify | Standard Features | Additional Options |
|--------------------------------|---|---|
| EXTERIOR COLOR | • Laminate (stock colors) | • Laminate (non-stock colors) • Powder coated (stock/non-stock colors) • Powder coated Silversan Black • Stainless steel |
| INTERIOR COLOR | • Powder coated Silversan Black | • Powder coated Designer White • Stainless steel |
| LOWER FRONT PANEL COLOR | • Powder coated Silversan Black | • Powder coated (stock/non-stock colors) • Stainless steel |
| BASE SUPPORT | • Casters w/ levelers (self-cont.) | |
| BUMPER FRONT | • 1" Boston bumper (specify color) | • 1" Stainless steel plate rail bumper |
| END PANELS | • Full w/stainless steel mirror interior | • Cutaway w/glass • None (specify per line-up) |
| FRONT DOORS | • Left hand hinge (customer facing) | • French doors • Right hand hinge (customer facing) |
| HEADER | • Flat header | |
| PRICE TAG MOLDING | • None | • 1" Price tag molding (black or silver) • Universal price tag molding (clear w/ open top) |
| REAR DOORS | • None (solid back panel) | • Solid rear swinging door(s) w/lock |
| SHELVING | • (5) Lighted solid shelves | • (4) Lighted solid shelves (required for milk crate drip pans) |
| LIGHTS | • LED 3500K w/ frosted lens | |
| ELECTRICAL CONNECTION | • 6' Straight blade power cord (self-cont.) | • 6' Locking power cord (self-cont.) |
| REFRIGERATION | • Breeze self-contained refrigeration | |
| ACCESSORIES | | ¹ • Stainless steel milk crate drip pans |

Option Notes: 1 - N/A with (5) shelves

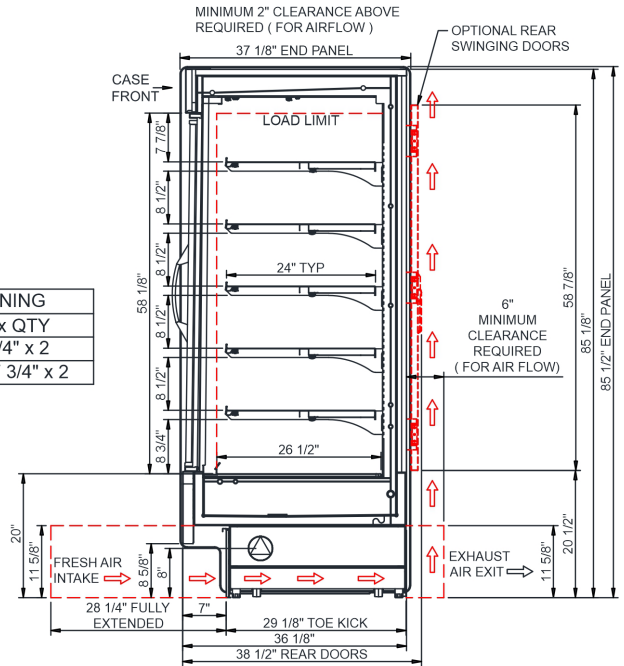
| | | |
|--|--|----------------------------------|
| Intended Environment: Type I - Designed to operate in ambient conditions of 75°F with 55% relative humidity unless noted otherwise in system information below. | | |
| Zone | Intended Product To Be Displayed | Warmest Avg Prod Temp ° F |
| 1 | Packaged / unpackaged refrigerated products-Prechilled to Warmest Avg Prod Temp. | 40 |

PLAN VIEW



NOTE:
1. SELF-CONTAINED REFRIGERATION ACCESS ONLY BY PULLING OUT CONDENSER DRAWER.

SIDE VIEW



| REAR DOORS OPENING | | |
|--------------------|-----------------------|--|
| MODEL | WD x HT x QTY | |
| MD485DR | 17" x 57 3/4" x 2 | |
| MD685DR | 28 5/8" x 57 3/4" x 2 | |

NOTE: ALL DIMENSIONS APPROXIMATE

- ELECTRICAL JUNCTION BOX (SUPPLIED WITH 6" LEADS OR POWER CORD).
- LOCATION OF DRAIN TUBE FOR REMOTE REF. ONLY (SUPPLIED WITH 3/4" OR 1 1/2" PVC TUBE).

- REFRIGERATION LINE CONNECTION.
- REMOTE FLOOR SINK & UTILITIES ACCESS AREA.

- SELF-CONTAINED CASE SERVICE ACCESS AREA.
- DRY CASE SERVICE ACCESS AREA.

| Model Technical Specifications | | | | | | | | | | | | | | | |
|--------------------------------|-------|-------|-----|-----------------------|------------|---------|------|----------|-------|-------|-----------|-----------------|-----------------|-----------------|--------|
| Model | L" | L1" | L2" | System | Circuit | Phs | Freq | Amps *** | Watts | Wires | NEMA Plug | SST | Conv. Rack BTUH | Para. Rack BTUH | Est Wt |
| MD485DR | 48.00 | 50.25 | .00 | Self-Contained (R290) | Circuit #1 | 110-120 | 1 | 60 | 10.73 | 1,008 | 2+G | 5-15P or L5-15P | N/A | N/A | N/A |
| MD685DR | 72.00 | 74.25 | .00 | Self-Contained (R290) | Circuit #1 | 110-120 | 1 | 60 | 11.18 | 1,061 | 2+G | 5-15P or L5-15P | N/A | N/A | N/A |

*** Does not include electric defrost on freezer models.

| Regulatory Approvals: | |
|-----------------------|---|
| All Models | Accordance with AHRI Std 1200 ETL Listed to UL 471 ETL Listed to CAN/CSA 22.2 No. 120 ETL Sanitation to NSF/ANSI 7 |



In Accordance with
AHRI Std 1200

DOE 2017
Energy Efficiency
Compliant

Important Notes:

- Units must be shimmed during installation to ensure the unit is level and plumb.
- ⚠ WARNING:** This product can expose you to chemicals, including Urethane (Ethyl Carbamate), which are known to the State of California to cause cancer and birth defects or other reproductive harm. For more information go to www.P65Warnings.ca.gov.