



SELF-CONTAINED DIRECT DRAW CONCESSIONAIRE



DDC92 shown with optional Draft Arm Towers. 61/8" casters included.



JOB	
AREA	
ITEM NO.	
MODEL NO.	

MODELS
DDC68
DDC92

KEY PRODUCT FEATURES AND BENEFITS

- Fully portable and self-contained mobile dispensing system, storing a CO2 drum, regulator, and liquid waste tank in an access area
- Energy efficient self-contained R290 Hydrocarbon refrigeration system provides industry leading cooling performance and temperature consistency
- Includes door locks, bumpers, casters, and a side cabinet for storing a CO2 tank (not included)
- Stainless steel interior and top standard on all perlick Back Bar refrigeration for long life durability and easy to clean hygienic storage
- NSF Certified to NSF/ANSI Standard #7 for storage of bottles, canned, and kegged beverages
- 2" Foamed-in-place insulation provides energy savings using Ecomate(tm), a blowing agent that has zero-ozone depletion and zero global warming potential
- End wall compressor and evaporator design increases storage capacity by 14% compared to top mounted designs
- Anti-sweat heaters in cabinet face prevents condensation from forming on door, extending door gasket life and protecting flooring below from damage or slip hazards

QUICK FEATURES

OPTIONS

- Integrated door locks standard on all units
- NSF Rated digital controller allows for easy and precise temperature changes
- 6000K white LED lighting
- Choose between three temperature ranges; Refrigerator (34°F-42°F) Factory set to 38°F, White Wine (40°F-65°F) Factory set to 45°F, Red Wine (40°F-65°F) Factory set to 60°F
- 1 Year Parts and Labor Warranty, 5 Year Compressor Warranty
- Electrical Supply—120 VAC/60Hz/1 Ph—NEMA 5-15 Cord Plug Type
- 1 Year Parts and Labor Warranty, 5 Year Compressor Warranty

MODEL NOS.	DESCRIPTION
DDC68	2-Door Model
DDC92	3-Door Model

Form No. 95170
Rev. 05.29.25



PERLICK®



SELF-CONTAINED DIRECT DRAW CONCESSIONAIRE

MODEL NUMBERS - DDC68, DDC92,

MODEL NUMBERS		DDC68	DDC92
NUMBER OF DOORS		2	3
EXTERIOR CABINET DIMENSIONS	Length - in. (mm)	68 (1727)	92 (2337)
	Depth - in. (mm)	24¾ (629)	24¾ (629)
	Height - in. (mm)	34⅞ (878)	34⅞ (878)
INTERIOR CABINET DIMENSIONS	Length - in. (mm)	44 (118)	68 (1727)
	Depth - in. (mm)	18¾ (476)	18¾ (476)
	Height - in. (mm)	28½ (724)	28½ (724)
* INTERNAL VOLUME, Net. Cu. Ft. (Litres)		16 (453)	24.8 (702)
SHIPPING WEIGHT, Lbs. (kg.)		365 (165)	515 (233)
ELECTRICAL SPECIFICATIONS	Electrical Supply	120 VAC/60 Hz/1 Ph	120 VAC/60 Hz/1 Ph
	Running Load Amps	5.5	6.3
	Electrical Connection	Cord connected	Cord connected
	Cord Plug Type	NEMA 5-15	NEMA 5-15
	Cord Length	6'5"	6'5"
	Defrost Initiation	Automatic	Automatic
	Defrost Type	Off cycle	Off cycle
	Thermostat	Digital control	Digital control
REFRIGERATION SPECIFICATIONS	Horsepower	1/4	1/3
	Refrigerant	R290	R290
	Refrigerant Charge, oz.	7.0	7.0
	Factory Temperature Setting-Refrigerator F (C)	38° (3.3°)	38° (3.3°)
	Temperature Range-Refrigerator F (C)	33°-40° (0.5°-4.5°)	33°-40° (0.5°-4.5°)
	Condensing Unit Location	Left	Left
	Expansion Device	Capillary tube	Capillary tube
	Pull Out Condensing Unit	Yes	Yes
	Front Vented	Yes	Yes
PLUMBING	Floor Drain Included	Yes	Yes
	Evaporator Condensate	Automatically	Automatically

* **Note:** For keg capacities and layouts, go to www.perlick.com.

Form No. 95170
Rev. 05.29.25

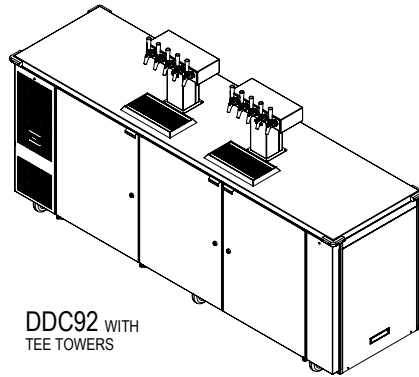


PERLICK®

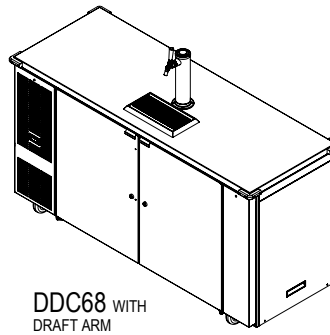


SELF-CONTAINED DIRECT DRAW CONCESSIONAIRE

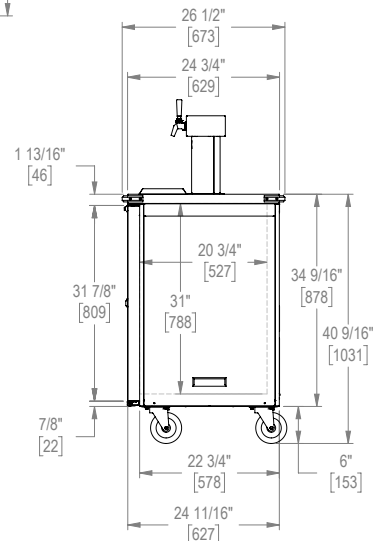
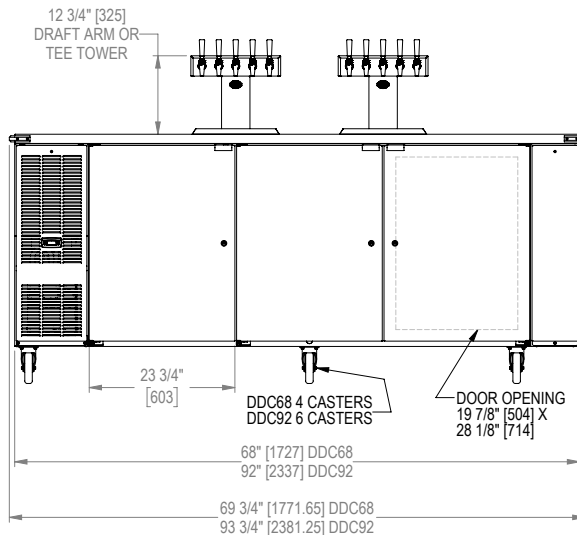
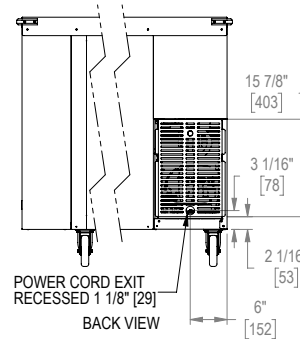
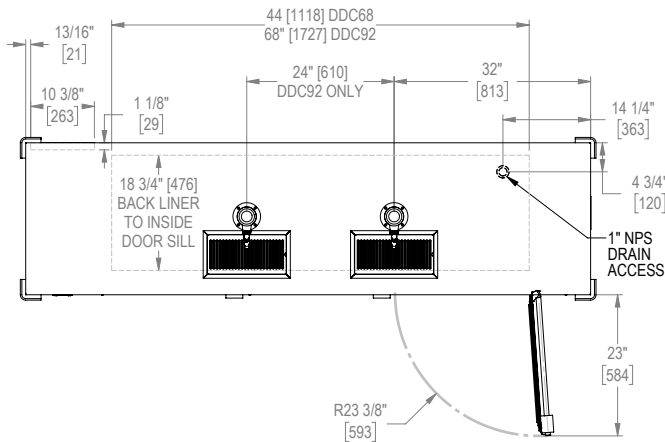
Note: All Dispensing Towers shown are optional and must be ordered separately.



DDC92 WITH
TEE TOWERS



DDC68 WITH
DRAFT ARM



95181
REV B
CJK
11/17/20

Form No. 95170
Rev. 05.29.25