



“WE MAKE THE KITCHEN BETTER!”

ATOSA USA, INC.

Toll Free: 855-855-0399 Email: info@atosausa.com

www.atosa.com | www.atosausa.com

California, Colorado, Florida, Georgia, Illinois, New Jersey, Ohio, Texas, Washington

Undercounter Freezers

Standard Features

- Stainless steel exterior & interior
- Field reversible door(s)
- Environmentally friendly R290 refrigerant
- Electronic temperature controller
- Maintains temperatures between -8°F – 0°F
- Self-closing door(s) with stay open feature
- Magnetic door gasket(s) standard for positive door seal
- Pre-installed casters
- One (1) pre-installed shelf per section

Optional Accessories

- Extended warranty up to 5 years

MODELS:

AUF27SD-GR / AUF36SD-GR / AUF48SD-GR
AUF60SD-GR



AUF27SD-GR



AUF36SD-GR



AUF48SD-GR



AUF60SD-GR

For the best results of food preservation we recommend setting your freezer between -8°F to 0°F

1. Don't forget to leave the unit some room to breathe!
2. Please clean the condenser frequently to give the unit more fresh air.



2 YEAR PARTS AND LABOR WARRANTY
5 YEAR COMPRESSOR PART WARRANTY





"WE MAKE THE KITCHEN BETTER!"

ATOSA USA, INC.

Toll Free: 855-855-0399 Email: info@atosausa.com

www.atosa.com | www.atosausa.com

California, Colorado, Florida, Georgia, Illinois,

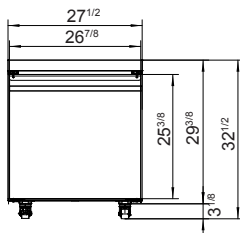
New Jersey, Ohio, Texas, Washington

SPECIFICATIONS

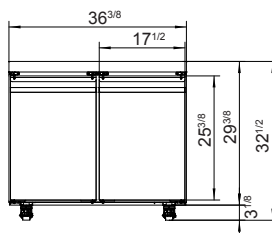
Models	Door	Capacity (Cu.Ft.)	Shelves	Casters (inch)	Rated Current (A)	Voltage (V/Hz/Ph)	HP	Refrigerant	Exterior Dimensions (inch)	Net Weight (lb)	Gross Weight (lb)
AUF27SD-GR	1	6.4	1	2	2.6	115/60/1	1/5	R290	27 ^{1/2} ×30×32 ^{1/2}	106	137
AUF36SD-GR	2	8.6	2	2	2.6	115/60/1	1/3	R290	36 ^{3/8} ×30×32 ^{1/2}	161	198
AUF48SD-GR	2	11.8	2	2	2.6	115/60/1	1/3	R290	48 ^{1/4} ×30×32 ^{1/2}	192	249
AUF60SD-GR	2	15	2	2	2.6	115/60/1	1/3	R290	60 ^{1/4} ×30×32 ^{1/2}	218	287

PLAN VIEW

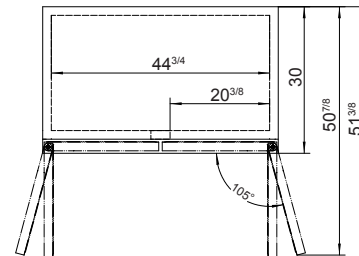
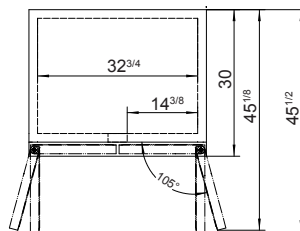
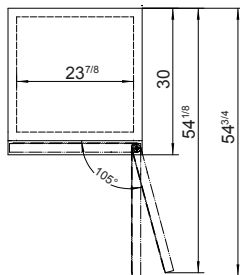
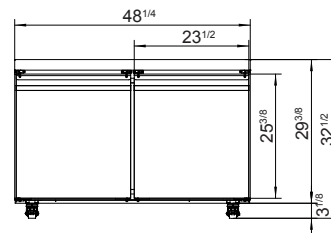
AUF27SD-GR



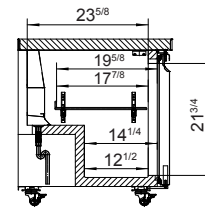
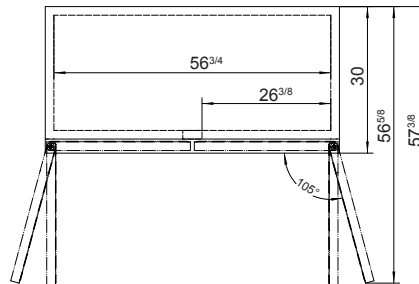
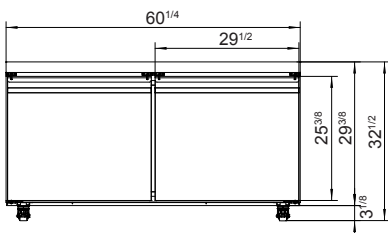
AUF36SD-GR



AUF48SD-GR



AUF60SD-GR



SIDE VIEW

Casters



Epoxy shelves



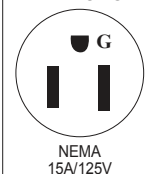
Rear grate



Temperature control



NEMA 5-15P



NEMA
15A/125V