



A family company manufacturing in the USA

www.glastender.com



GW24
Shown with sliding
door closed



Intertek



Intertek

4004503

Conforms to NSF/ANSI STD 3 and UL STD 921
Certified to CSA STD C22.2 No. 168

Specifications

Materials

- 20 gauge stainless steel parts include: cabinet
- 18 gauge stainless steel parts include: floor and tanks
- 16 gauge stainless steel parts include: leg mounting brackets and legs
- 11 gauge stainless steel parts include: drive wheel

Detergent

- Extra heavy duty, non-foaming, commercial liquid dishwashing detergent is required - .030% concentration
- Consult local chemical supplier to match detergent with local water conditions

Sanitizer

- Liquid chlorine bleach (sodium hypochlorite - 5.25% solution) adjusted to 50 ppm

Rinse Aid

- Liquid Rinse Aid adjusted for proper sheeting

NOTE: Detergent, Sanitizer, and Rinse Aid containers are stored externally. The side cut-out in the machine provides space for three one-gallon chemical containers within the 24" by 24" foot print of the machine.

Glastender, Inc. • 5400 N Michigan Rd • Saginaw, MI • 48604-9780
989.752.4275 • 800.748.0423 • Fax 989.752.4444
www.glastender.com

Specifications subject to change without notice. For current specifications please visit our website.

Project: _____	AIA# _____
Item #: _____ Qty: _____	SIS# _____
Model #: _____	

Rotary Glasswasher

GW

GW24

Standard Features

- Fill and dump style cycle uses less water and energy than traditional rotary glasswashers.
- Unit plugs into standard 120V electrical outlet for an easy installation.
- Computer controlled fill cycle allows for 75°F (24°C) rinse, providing clean glasses that are cool to the touch.
- The sliding cover and cold water rinse prevent steam from escaping during and after the cycle.
- Unique drainboard top provides integrated glassware landing area.
- Exclusive design with side notch provides space for three one-gallon chemical containers within the 24" by 24" foot print.
- Conveyor advance switch rotates conveyor one-half turn for easy loading and unloading of glassware.
- Covers and drainboard top are easily removable for cleaning access.
- Pre-programmed de-liming cycle for easy removal of mineral deposits during maintenance (de-liming agent must be added).
- Conveyor and stationary spray box are easily removed for cleaning and visual inspection.
- Automatic peristaltic metering pumps accurately dispense detergent, sanitizer, and rinse aid.
- Water valve with built-in strainer and flow control provides consistent volume between 25 and 100 PSI.
- Unit has built-in air gap - vacuum breaker is not required
- Removeable front panel for service access.

Accessories

- 01001500 Slide-out chemical rack
- 01001564 Export transformer 220V/50Hz electrical
(Eliminates side notch)



Slide-out chemical rack

Approval/Notes:

Rotary Glasswasher

Specifications

General Plumbing	
Water Connection	1/2" water supply 3/8" FMPT
Min. Water Pressure	25 PSI
Max. Water Pressure	100 PSI
Consumption	3 gallons per cycle
Hot Water Supply	Max.: 150°F (66°C) Min.: 130°F (54°C)
Cold Water Supply	No minimum temperature requirement

Capacity
3-1/4" diameter glasses - 24 per cycle
2-1/2" diameter glasses - 49 per cycle

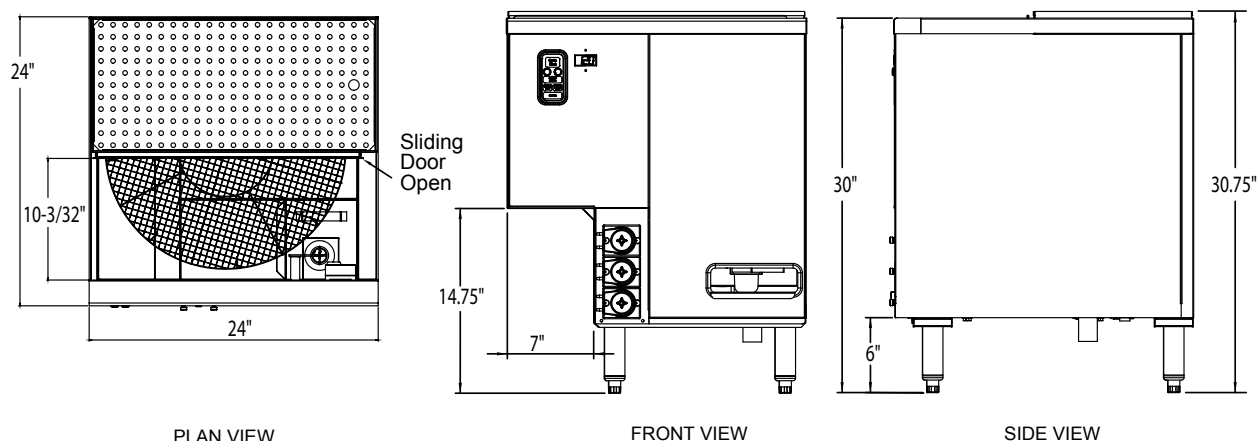
Operating Cycle
2 minute 15 second

Electrical	
Electrical Supply	120V, 1 phase, 60 Hz
Full Load Amps	3.5 amps, dedicated 15 amp circuit recommended
Plug Type	6 foot NEMA 5-15P grounded cord included



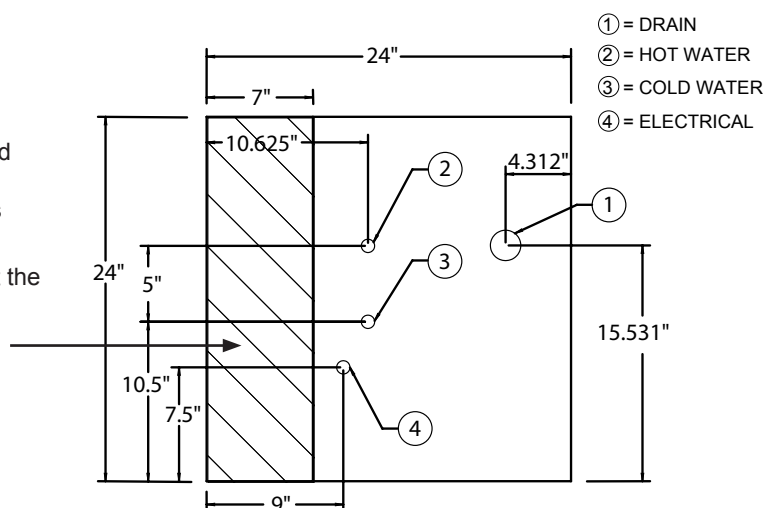
5-15P

Drawings



NOTES:

1. In all cases, consult local plumbing, electrical, and health codes for regulations which may not be consistent with the information on the front of this specification sheet.
2. The utility connections are made from the floor at the bottom of the unit approximately 7" to 8" high.
3. Avoid drain or water supply through chemical storage on the left side.
4. The Glastender policy of constant quality improvement means specifications are subject to change without notice.



Installation Note:

Front side service is essential. Detergent, Sanitizer, and Rinse Aid containers are stored externally - six-foot lengths of tubing are provided. Storage for three one-gallon containers is required within five feet.



5400 N Michigan Rd • Saginaw, MI • 48604-9780
989.752.4275 • 800.748.0423 • Fax 989.752.4444
www.glastender.com

Printed in USA