

Modular Equipment 90113 Series

Sink & Faucet Units -
Stainless Steel Top



L-90113 shown with options

SPECIFICATIONS:

TOP: Die-formed construction of one piece 16 GA stainless steel type 304-#4 finish with 2 5/8" nosing, 20GA-18GA integral stainless sink, Backsplash to be 3/8" coved, 6" high x 2 1/8" wide, Sheared ends fitted with recessed 12 GA steel bars for adjoining units, producing a hairline seam

INTERIOR: Ends of pan type construction, cold rolled steel, Top and body supported by 14 GA galvanized steel box channels, Sound deadening material applied between top of support channels and underside of top

EXTERIOR: Ends are the unfinished painted side of the cold rolled steel, Back is open

FRONT: Exterior removable panel of one-piece die-stamped 20 GA stainless steel type 304-#4 finish

LEGS: 8" high legs standard, 1 5/8" tubing welded to steel plate and fastened to body support channels, Bullet-foot has 1 1/8" of adjustment, All legs are stainless steel

ITEM # _____

PROJECT _____

DATE _____

MODEL	LENGTH
L-90113	14"
L-90113-A	16"
L-90113-B	18"
L-90113-C	24"
L-90113-D	24"

DEPTH
28" OR 32"

FEATURES

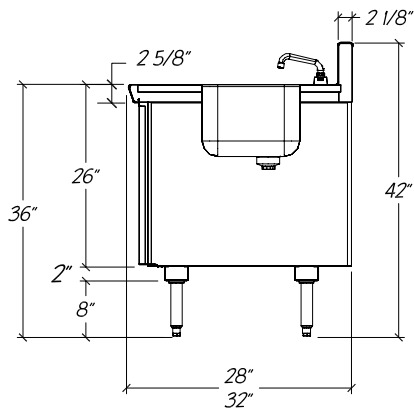
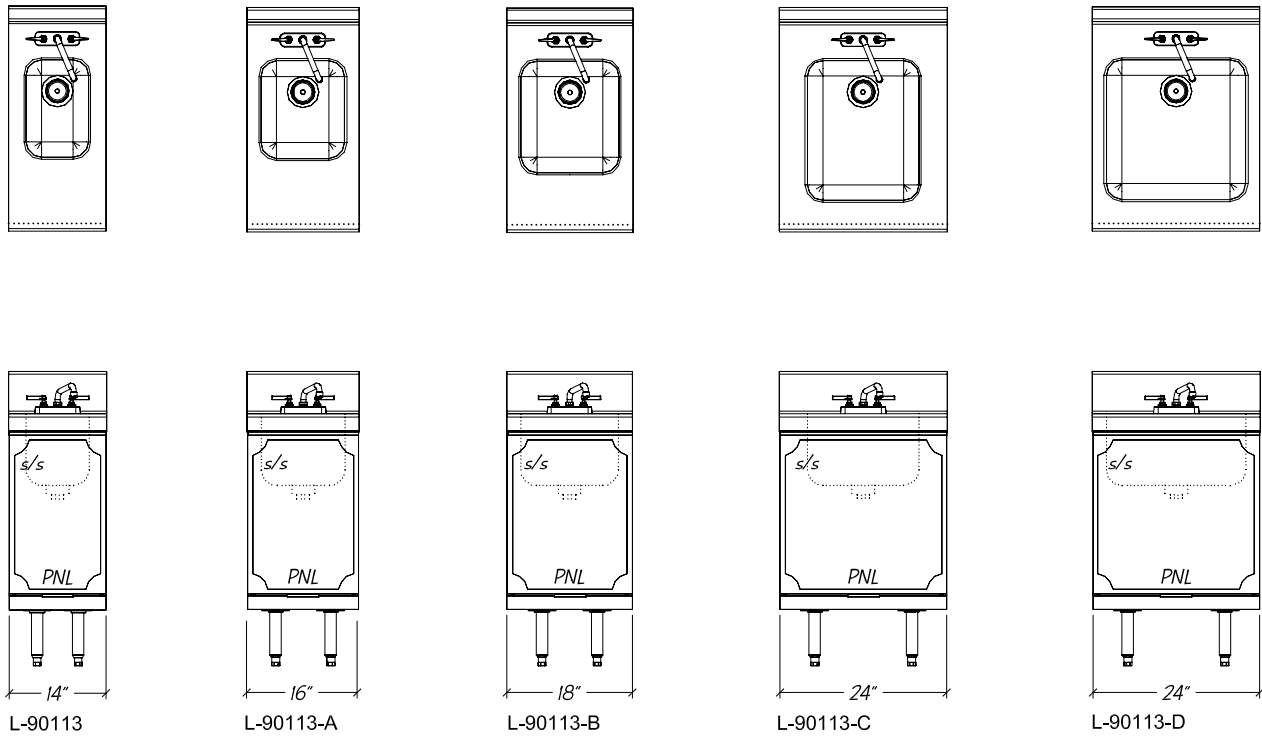
- Available with other modular equipment under one top up to 10 feet in length
- 16 GA reinforced top
- 1" and fractional lengths available
- Legs removable in field
- Uniform integration in design, quality and parts

OPTIONS

- Gooseneck Faucet
- Backsplash Mounted Faucet
- Twist Lever Waste Drain
- Single Thickness Removable Riser (splashguard)

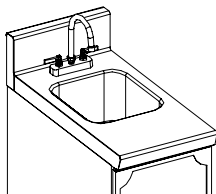
Modular Equipment L-90113 Series - Slnk & Faucet Units

DIMENSIONAL DATA

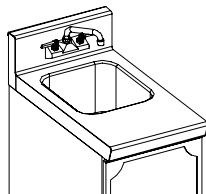


STATISTICAL DATA					
MODEL	LGTH	SINK SIZE L X W X H	STEEL GA.	SHIP WT.	
L-90113	14"	9" X 14" X 10"	20GA	95#	
L-90113-A	16"	12" X 14" X 10"	20GA	105#	
L-90113-B	18"	14" X 16" X 10"	18GA	115#	
L-90113-C	24"	16" X 20" X 10"	18GA	125#	
L-90113-D	24"	20" X 20" X 10"	18GA	130#	

Optional
Gooseneck Faucet



Optional
Backsplash Mounted Faucet



Optional
Twist Lever Waste Drain



Modular Equipment 90113 Series MECHANICAL DATA

- Water supply 1/2" NPS Male inlet w/
1/4" NPT connection 34" A.F.F.
- 1 1/2" NPS Sink Drain 27" AFF

