



Project _____
AIA # _____ SIS # _____
Item # _____ Quantity _____ C.S.I. Section 114000



PW12n-ADV advansys™ Electric High Temperature Ventless Pot, Pan & Utensil Washer



SPECIFIER STATEMENT

Specified dishwasher will be Hobart PW10n-ADV Advansys™ electric high temperature ventless Pot/Pan/Utensil Washer, front loading with split door design, (10) pan capacity, Complete Delime™ with Auto Dispensing and Booster Guard™, touchscreen controls with WiFi connectivity, NSF pot and pan rating for 2, 4, & 6-minute cycles, up to (13) cycles/hour, includes: (1) flat grid, (1) tray rack & (1) flat bottom rack, high temperature sanitizing with Sense-A-Temp™ 70° rise booster, pumped drain, 1.2 gallons per cycle, pumped final rinse, stainless steel construction, X-shaped upper & lower wash arms, service diagnostics, 208/240v/60/3-ph & 480v/60/3-ph.

1 year parts and labor warranty.

STANDARD FEATURES

- + Timed wash cycles; cycles per hour: 13 (2 minute wash), 9 (4 minute wash), 7 (6 minute wash)
- + 1.2 gallons of water per cycle
- + Ventless Energy Recovery
- + Door lock
- + Factory installed drain water tempering
- + Complete Delime™ with Delime Notification, Auto Dispensing and Booster Guard™
- + NSF pot and pan rating for 2, 4, & 6-minute cycles
- + Hot water sanitization machine
- + Sense-A-Temp™ booster heater capable of 70° rise
- + External rack holder
- + Front loading, split-door configuration
- + Chamber accepts 10 full-sized sheet pans, or (1) 140 quart mixing bowl
- + Stainless steel deep drawn tank
- + X-shaped revolving, interchangeable upper and lower anti-clogging wash arms
- + Revolving, interchangeable upper and lower rinse arms
- + Removable stainless steel strainer pans and scrap basket
- + User-friendly smart touchscreen controls
- + WiFi connectivity
- + SmartConnect app and cloud with machine status, temperature logs, error code reporting, and cost, consumption and usage analysis
- + Service diagnostics
- + 3rd party power supply for chemical feeder
- + Temperature alerts and lock outs (field activated)
- + Pumped drain
- + Automatic fill
- + Pumped rinse
- + Scheduled fill time and scheduled drain time (field activated)
- + 33.79"H x 26.19" W door opening
- + Rack size: 23.71"W x 26.85"D x 2.26"H

OPTIONS & ACCESSORIES (Available at extra cost)

- ☐ Steam pan rack
- ☐ Door height lowering kit
- ☐ Heavy duty roll-in rack
- ☐ 12 pan rack (must be equipped with heavy duty roll-in rack)
- ☐ Water hammer arrestor kit
- ☐ Spray hose (8')
- ☐ Seismic feet with holes
- ☐ Flange feet for weld down
- ☐ Security package
- ☐ Combination rack

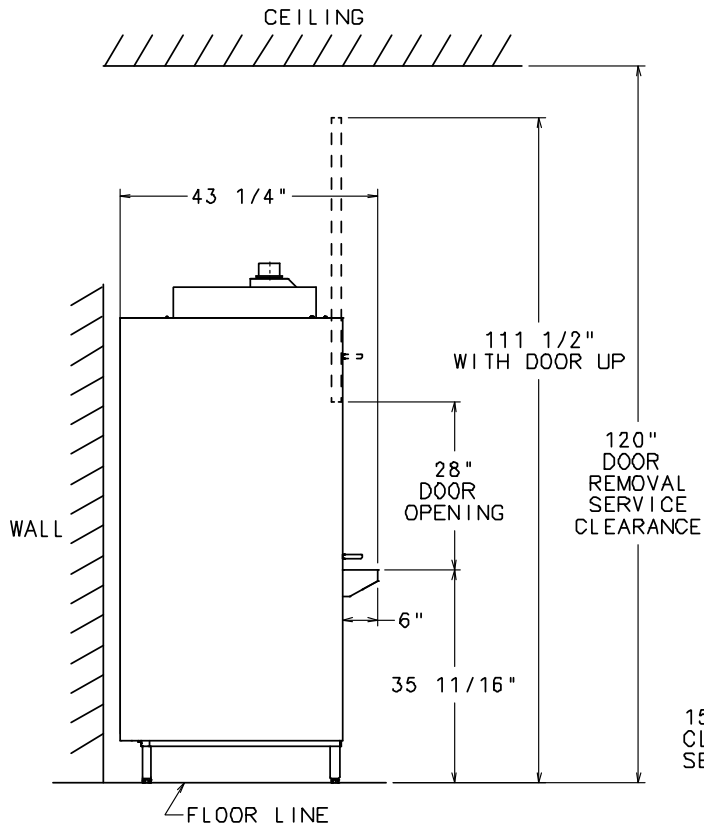
PWn SERIES – PW12n-ADV advansys™ Electric

Approved by _____ Date _____ Approved by _____ Date _____

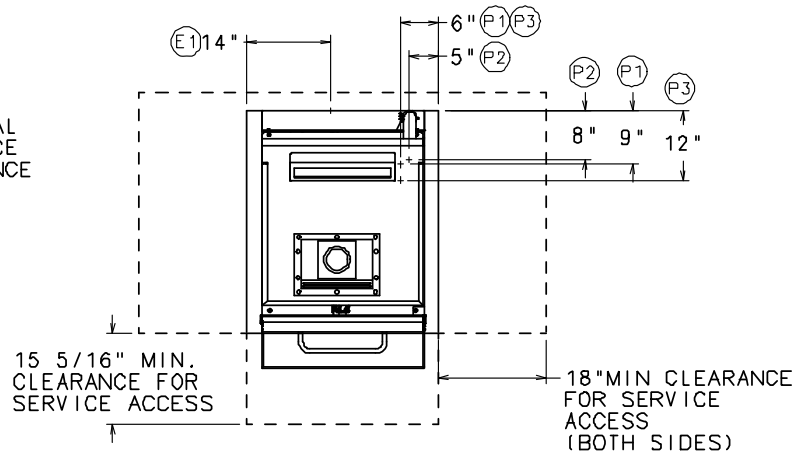


PW12n-ADV ^{advansys}™ Electric

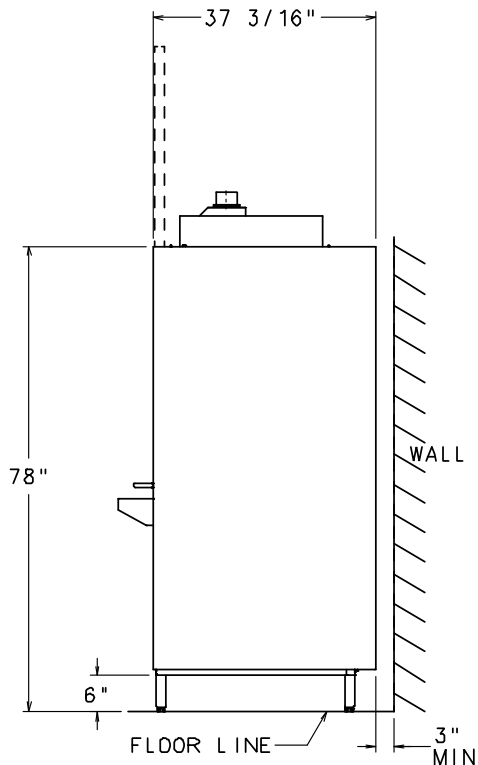
High Temperature Ventless Pot, Pan & Utensil Washer



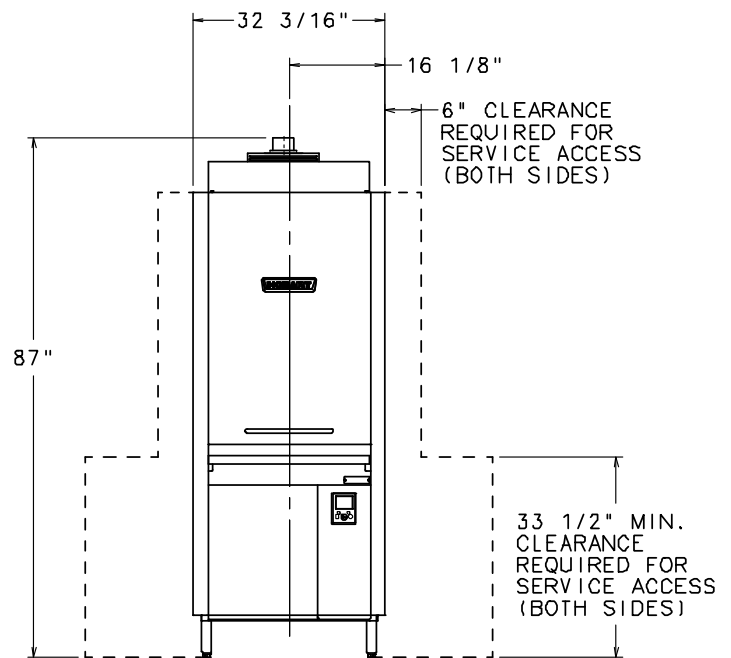
Right Side View



Top View



Left Side View



Front View

MODEL:
PW12n-ADV
01-605366
REV A2



PW12n-ADV ^{advansys}™ Electric

High Temperature Ventless Pot, Pan & Utensil Washer

LEGEND

Electrical Connections	
E1	Electrical connection (including electric heat): 1-7/8" conduit hole, 7" AFF.
Plumbing Connections	
P1	Hot water connection incoming: 110°F water minimum. 3/4" female garden hose fitting on 9' long hose supplied with machine. 8" AFF.
P2	Drain connection: 7/8" barb fitting, 28" AFF. 8' long 5/8" hose supplied with machine.
P3	Cold water connection incoming: 90°F water maximum (65°F optimal), 3/4" female garden hose fitting on 9' long hose supplied with machine. 8" AFF.

WARNING: Electrical and grounding connections must comply with the applicable portions of the National Electrical Code and/or other local codes.

Plumbing connections must comply with applicable sanitary, safety and plumbing codes. Drain and fill line configurations vary, some methods are shown on this drawing.

Plumbing Notes

Required minimum flowing water pressure to the dishmachine in 15 PSIG. If pressures higher than 65 PSIG are present, a pressure regulating valve may be installed in the water line to the dishmachine (by others).

Recommended water hardness to be 3 grains or less for best results. Pressure gauge not required on pumped rinse machine.

Miscellaneous Notes

Backflow prevention provided by NSF-approved air gap device.

Single point electrical connection machine.

Vent hood is not required due to internal condensing system.

All dimensions taken from floor line may increase 1-1/2" depending on leg adjustment.

For optimal performance, Hobart recommends maintaining a dishroom temperature of 65°F (18°C) or higher, as lower temperatures may hinder the machine's capacity to operate effectively (with lower performance as ambient temperature decreases).

SPECIFICATIONS

Capacities

Wash Time Settings (minutes) 2, 4, 6
Cycles per Hour
. 13 (2 min. wash), 9 (4 min. wash), 7 (6 min. wash)
Tank Capacity – Gallons 21

Motor Horsepower

Wash 4.0
Rinse 0.36
Drain 0.21
Blower 0.06

Water Consumption

U.S. Gallons per Cycle 1.2
U.S. Gallons per Hour (maximum use) 17.8
Peak Drain Flow – U.S. Gallons (gallons per minute) 21.0

Temperatures °F

Wash 150
Rinse 180

Heating

Tank Heat, electric (kW) 16.4
Electric Booster (kW) 16.4

Standard 20" x 20" Rack Complement

Tray Rack (12 pan each) 1
Flat Grid 1
Flat Bottom 1

Shipping Weight (approximate) 595 lbs.

Crated Dimensions 88"H x 36"W x 40-3/4"D

Electrical Specifications			
Voltage	Rated Amps	Minimum Supply Circuit Ampacity	Maximum Protective Device
208/60/3	49.2	60	60
240/60/3	54.5	70	70
480/60/3	29.7	35	35

Dishmachine not provided with internal GFCI protection.

Approximate Heat Gain to Space without Vent Hood	
Latent	Sensible
9,900	6,300