



BEVERAGE-AIR®

| | |
|-----------------|------|
| Project: _____ | AIA# |
| Item: _____ | |
| Location: _____ | SIS# |
| Approved: _____ | |

MMF44HC GLASS DOOR MERCHANDISER SERIES - ELECTRONIC LOCK

MARKETMAX FREEZER WITH ELECTRONIC LOCK

MMF44HC Black Hinged Double Glass Door
Hydrocarbon Series

MODEL:
MMF44HC-1-B-IQ



7 Year Parts/Labor Warranty
7 Year Compressor Warranty

CABINET CONSTRUCTION

- Exterior features durable black painted steel
- Heavy duty interior construction includes white coated steel walls
- Modern one-piece grille
- Full electronic control
- Freezers has triple pane lowE argon filled glass doors
- Self-closing doors with 120° stay-open feature
- Snap-in gaskets, easy to remove for cleaning or replacement
- LED lighting
- Brightly lit sign panel
- Ten (10) heavy duty epoxy coated wire shelves
- Four (4) shelf clips included per shelf
- Self-contained bottom mount refrigeration system
- Leveling feet standard

OPTIONS & ACCESSORIES

- Stainless steel or white exterior
- Stainless steel or black interior
- Shelves black or white
- Shelf clips
- Flow track
- Gravity-Flo track
- Novelty basket
- Price tag molding
- Custom sign panel
- Custom graphics
- 3" or 6" Casters
- 6" Legs or seismic/flanged legs
- Remote option* (see note on back on page)

ELECTRONIC SMART LOCK FEATURES

- Secure temperature-sensitive product for worry-free operation
- LED indicator to quickly view status
- Easy-access test switch for health inspectors
- Built-in safety feature allow escape in case of accidental lock-in

REFRIGERATION SYSTEM

- Uses environmentally friendly, energy efficient R290 refrigerant, and meets all regulatory requirements for CARB, SNAP, DOE & more
- Electric defrost with hot gas condensate evaporation
- Epoxy coated evaporator coil
- Maintains product temperatures down to -10°F




Please verify qualifying units by visiting:
www.energystar.gov/cfs

3779 Champion Blvd., Winston-Salem, NC 27105
1-888-845-9800 Fax: 1-336-245-6453
Beverage-Air.com Sales@bevair.com



BEVERAGE-AIR®

| MODEL | MMF44HC-1-B-IQ |
|----------------------------------|----------------------|
| EXTERNAL DIMENSIONAL DATA | |
| Width Overall | 47" |
| Depth Overall with Handle | 33 1/2" |
| Height Overall | 78" |
| Number of Doors | 2 |
| Depth with Door Open 90° | 53 1/2" |
| Door Openings (in) | 20 1/8" x 52 5/8" |
| INTERNAL DIMENSIONAL DATA | |
| NET Capacity (cubic ft.) | 44.0 |
| Internal Width Overall (in) | 44" |
| Internal Depth Overall (in) | 26" |
| Internal Height Overall (in) | 61 5/8" |
| Internal Height Useable (in) | 55" |
| Number of Shelves | 10 |
| ELECTRICAL DATA | |
| Full Load Amperes | 13.9 |
| Voltage | 115/60/1 |
| Nema Plug (8' cord) | 5-20P |
| REFRIGERATION DATA | |
| Horsepower | 2X 3/4 |
| Capacity (BTU/Hr) | 2X 2097 |
| Heat Rejection (BTU/Hr) | 6291 |
| Charge (lbs/grams/ounces) | 2X .2094 / 95 / 3.35 |
| WEIGHT DATA | |
| Gross Weight - Crated | 570 lbs |
| Height - Crated | 82" |
| Width - Crated | 49" |
| Depth - Crated | 36" |

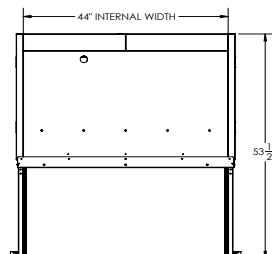
*NOTE: Remote units are field wired and come with 6" legs.
Refrigerant must be specified at time of order.

We reserve the right to change specifications and product design without notice.
Such revisions do not entitle the buyer to corresponding changes, improvements,
additions or replacements for previously purchased equipment. Dimensional
tolerances +/- 1/4". Metric dimensions (MM).

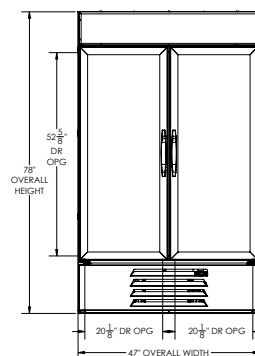
Glass Door Merchandisers - Electronic Lock Model: MMF44HC-1-B-IQ

Model Views

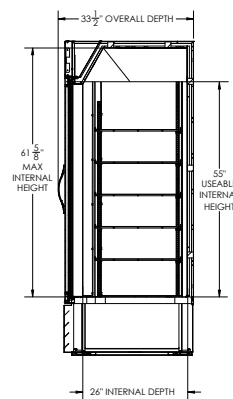
Required Clearance: Rear 3"



PLAN VIEW



ELEVATION VIEW



SIDE VIEW

ELECTRICAL CONNECTION



115/60/1
NEMA 5-15P

Unit pre-wired at factory
and include 8' long cord
and plug set.



3779 Champion Blvd., Winston-Salem, NC 27105 1-888-845-9800 Fax: 1-336-245-6453 Beverage-Air.com Sales@bevair.com

