



SPEC SHEET

KoolMore KoolMore Reserve 15 in. Residential Panel Ready Ice Maker 57 lbs/24hr in Stainless-Steel

Model: KM-BIM57-PR

FEATURES

- KoolMore Reserve Collection: High-end, luxury ice maker with superior craftsmanship.
- Panel-Ready Design: Customizable with cabinetry panels for seamless kitchen integration (panel not included).
- High Ice Production: Up to 57 lbs. of ice daily for entertaining or daily use.
- Large Storage Capacity: Holds 26 lbs. of ice, ideal for high-demand scenarios.
- Efficient Operation: 30-minute ice production cycle with automatic shut-off for energy savings.
- Versatile Installation: Built-in or freestanding options for flexible placement.
- Advanced Technology: Digital touch controls, delay start, and selectable ice cube sizes.
- Built-in Drain Pump: Simplifies installation and eliminates manual drainage.
- Quiet Performance: Operates at 58 dB for minimal noise disruption.
- Self-Closing Door: Ensures secure closure and energy efficiency.
- Zero Clearance Hinge: Smooth operation in compact spaces with multiple open positions.
- ETL Certified: Meets safety standards, includes 1-year parts and labor warranty.



CLOSE UP IMAGES



TECHNICAL SPECS

Dimensions

Length	14.8
Width	22.6
Height	34.1
Depth With Door Open 90 Degrees	37.4
Interior Width	12.2
Interior Depth	15.47
Interior Height	20.08
Weightlbs	75

Capacity

Ice Storage Capacity Lb	26
Ice Production Per Day Lb	57

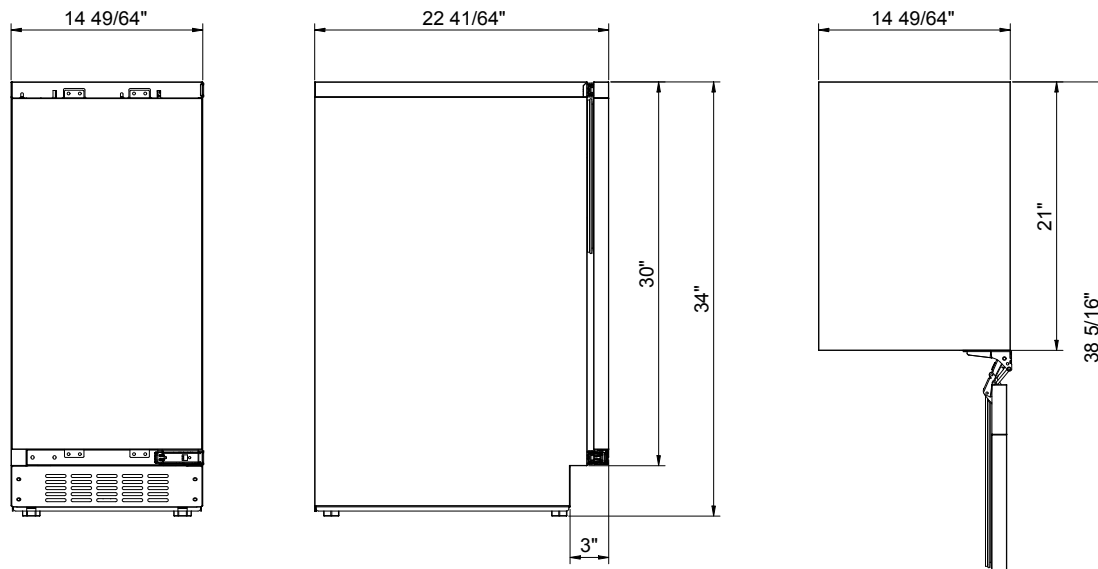
Features & Materials

Installation Type	Built-under or Freestanding Installation
Cooling Unit Type	Automatic
Defrost Type	Reverse Cycle
Compressor Location	Rear Bottom
Control Type	Digital
Refrigerant Type	R-600a
Ambient Temperature Range	60-100 F
Drain Required	Yes
Drain Type	Integrated drain pump
Drain Pump Position	Rear Bottom
Diameter Of Water Line Connection	0.25
Diameter Of Drain Line Connection	0.25
Cycle Length Mins	30 minutes
Removable Bin Basket S	No
Reversible Doors	Yes
Door Style	Swing
Hinge Type	Articulated Hinge
Hinge Location	Top and Bottom
Door Handle	No
Ice Type	Rectangular bell-shape
Number Of Possible Ice Cube Shapes	1
Number Of Possible Ice Cube Sizes	3
Automatic Shut Off	Yes
Clean Cycle	Yes
Water Filter For Clear Ice	No
Filtered Ice	No
Overfill Protection	Yes
Ice Bin Full Indicator	Yes
Ice Scoop Included	Yes
Ice Scoop Material	Stainless-Steel
Interior Ice Scoop Hook	Yes
Interior Lights	No
Sabbath Mode	Yes
Noise	58 dB
Exterior Material	Stainless-Steel
Interior Material	Polymer
Gauge Of Stainless Steel	20
Storage Bin Insulation	Yes
Interior Color	White
Number Of Feet	4
Legs Adjustable	Yes, 2.75 in.

Electric & Certification

Horsepower	0.25
Amps	6
Hertz	60
Phase	1
Voltage	115
Wattage	500
Plug Type	NEMA 5-15P
Power Cord Length	73
Certifications	ETL Listed for Sanitation

Plan View



CERTIFICATIONS



Intertek



718-576-6342
info@koolmore.com